

## LAU 52: HENLLYS VALE, CASTELL-Y-BWCH & HOLLYBUSH

### Susceptibility to Wind and Solar development

Combined summary of landscape susceptibility

Criteria	Description	Score		
		Low	Med	High
<b>Landscape susceptibility</b>				
Scale	Medium scale			
Landform	Rolling lowland			
Landcover	Agricultural fields bounded by hedgerows and trees, occasional woodland.			
Built environment	Scattered rural farms and settlements with local road network. Some overhead powerlines. Includes Monmouthshire and Brecon Canal, a Conservation Area. Rougemont School in southeast corner, edge of Malpas.			
<b>Visual susceptibility</b>				
Skylines and settings	Undulating landscape.			
Movement	Infrequent activity.			
Visibility, quality of views	Strong field boundaries and rolling topography create enclosure, views in and out are framed by these features but available to Cwmbran and other surrounding settlements.			
Views in/out	Attractive views both in and out with some detractive views out to hard urban edge.			
Typical receptors	Residents within the area and the southern fringes of Cwmbran, northern edge of Malpas and Bettws. Recreational users of PRoW, and Monmouthshire & Brecon Canal, which includes NCN Route 49, land workers.			
Scenic quality and character	Moderate scenic quality, landscape character and integrity.			

Criteria	Description	Score		
		Low	Med	High
Landscape value (designations)	Conservation Area on Monmouthshire and Brecon Canal, travelling north to south, which includes 5 listed structures. A further 5 listed features across the area include places of worship and farm buildings. Llwyn Celyn LNR on fields around the cemetery in the northern boundary of the area. Scattered small scale ancient woodland sites. SINCs covering LNR, ancient woodland sites and large areas around Springfield Farm, Ty Cody Wood and Limekiln Wood.			
Visual/sensory	LANDMAP overall evaluation			
Historic value	LANDMAP overall evaluation			
Habitats value	LANDMAP overall evaluation			
Geological value	LANDMAP overall evaluation			
Visual value (key views/vistas)	Views to and from Monmouthshire & Brecon Canal.			
Aesthetic, perceptual, experiential	A moderate sense of place, with settled, pleasant perceived qualities.			

### Landscape Sensitivity

Summary of Sensitivity - Wind	Assessed Sensitivity				
The assessment identifies that the landscape is of high sensitivity, the landscape character of the area would only be able to accommodate development of this type in limited situations.	V Low	Low	Med	High	V High

Summary of Sensitivity - Solar	Assessed Sensitivity				
The landscape is assessed as of high sensitivity with low tolerance to change of this type without adverse impacts on landscape character.	V Low	Low	Med	High	V High

## Guidance on Siting

A fairly large area with a tranquil rural character contrasting with the nearby urban settlement. The following advice should be considered for renewables development within this landscape unit:

### Wind turbines

- Consider opportunities to use local topography and woodlands to partially screen turbines from wider views.
- Respect the setting of the Monmouthshire & Brecon Canal, Conservation Area and listed structures.
- Site turbines away from individual residences and settlement edges.

### Solar PV

- Consider using existing woodland and local topography to screen solar development from wider views.
- Consider opportunities to site solar development within existing field boundaries, or where these can be enhanced as part of the development.
- Only site solar farms within SINCs where their management can be consistent with management objectives of SINC.
- Respect the setting of the Monmouthshire & Brecon Canal, Conservation Area and listed structures.

Any development should be subject to a detailed environmental impact assessment including landscape, cultural heritage and biodiversity as a minimum.

## Landscape capacity

Total area of LAU: 679 Ha.

### Wind turbines

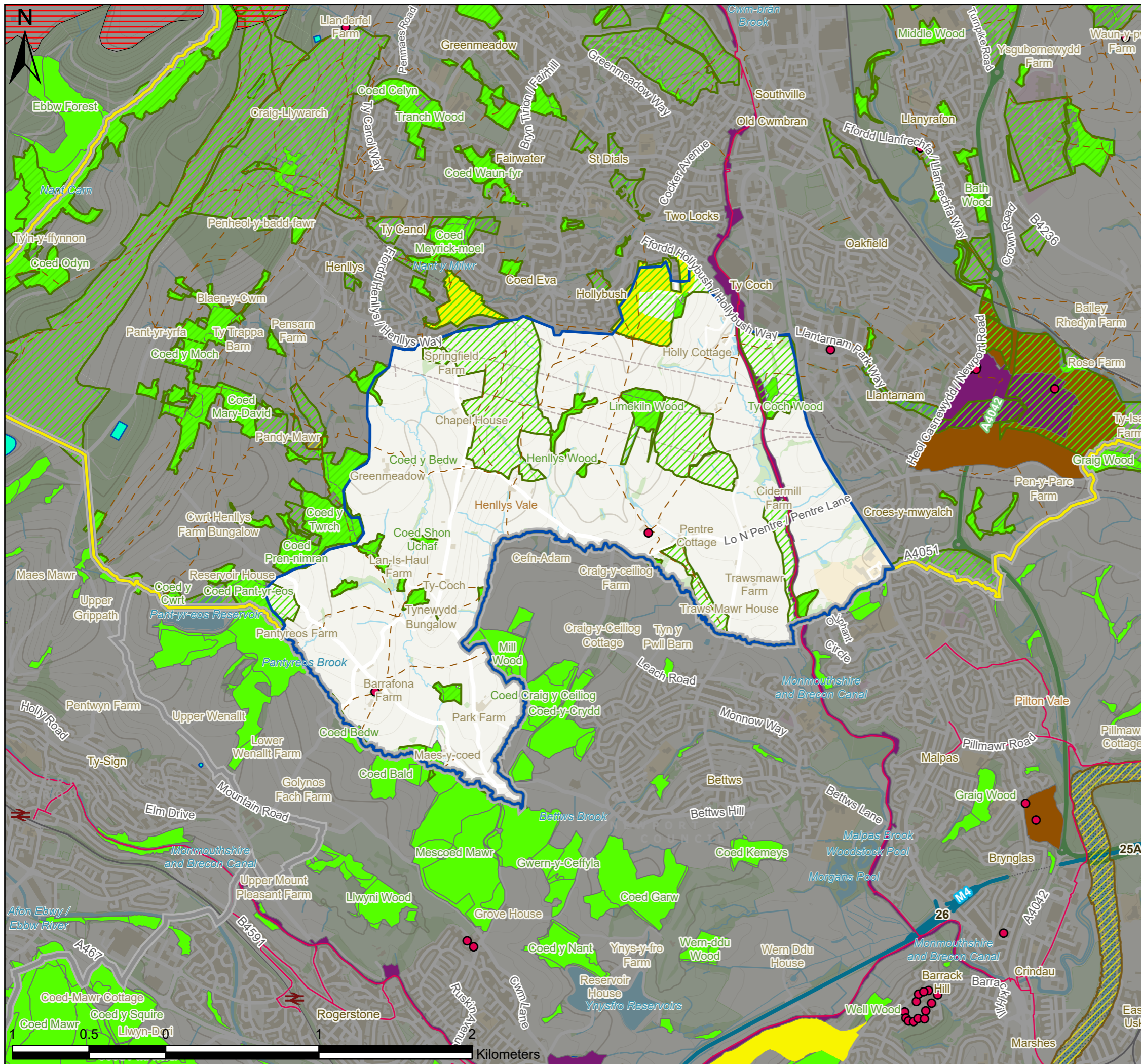
There is no existing wind turbine development in the landscape unit. The area has high sensitivity to wind development. There may be opportunities to site individual or small groups of turbines in this area, with care to avoid cumulative effects, following the guidelines above.

### Solar PV

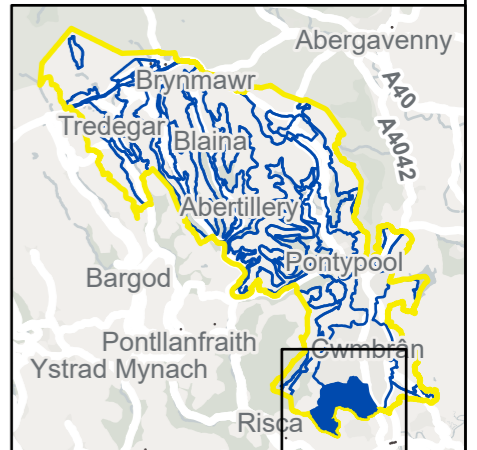
There is no existing solar development in this landscape unit. There is a single small scale solar development at Cwrt Henllys Farm to the southwest. The landscape sensitivity is high. There may be potential to site several small-scale solar developments in this area, taking care to avoid cumulative effects and following the guidance above.

For Local Landscape Constraints see Figure 7.52.1





- Listed Buildings
- ▭ Landscape Area Unit
- ▭ Study Area
- ▭ Local Authorities
- National Cycle Network
- - - BGCBC and TCBC Public Rights of Way
- ▭ Pre-Assessed Areas for Wind Energy
- ▭ Sites of Special Scientific Interest
- ▭ Special Areas of Conservation
- ▭ BGCBC and TCBC Sites of Importance for Nature Conservation
- ▭ Conservation Areas
- ▭ Scheduled Monuments
- ▭ Historic Parks and Gardens
- ▭ Local Nature Reserves
- ▭ Ancient Woodland



P3	FI	28/10/2021	Client feedback	TW	ZS	LC
P2	FI	06/07/2021	Client feedback	TW	ZS	LC
P1	S3	10/06/2021	First issue	TW	ZS	LC
V.	S.	Date	Description	B.	C.	A.

- Environmental Consultants
- Planners
- Landscape Architects
- Landscape Managers
- Urban Designers
- Ecologists

10 Park Grove, Cardiff, CF10 3BN • 02920 228966 • admin@tacp.co.uk

**Blaenau Gwent and Torfaen County Borough Councils**  
**Sensitivity and Capacity Study for Renewable Energy Development**

Figure 7.52.1  
 LAU 52 Landscape Constraints (Sheet 1 of 1)

Drawing no.: 61007\_DWG\_F7-52-1LAU52



## LAU 53: LASGARN FARMLAND

### Susceptibility to Wind and Solar development

Combined summary of landscape susceptibility

Criteria	Description	Score		
		Low	Med	High
<b>Landscape susceptibility</b>				
Scale	Large scale	Low		
Landform	Gently rolling hillside			High
Landcover	Agricultural fields bounded by hedgerows and trees, occasional small woodlands. Southeast corner of area managed as golf course.		Med	
Built environment	Scattered farmsteads, local roads.			High
<b>Visual susceptibility</b>				
Skylines and settings	Undulating landscape.		Med	
Movement	Infrequent activity.		Med	
Visibility, quality of views	Generally open landscape with strong field boundaries and woodland forming some enclosure. Good views to the west across valley to uplands. Views in limited by intervening topography and woodland.		Med	
Views in/out	Attractive views both in and out with some detractive views out.			High
Typical receptors	Residents within the area and northern edge of Trevethin, recreational use (PRoW, golf course). Land workers.			High
Scenic quality and character	High scenic quality, moderate landscape character and high integrity.			High

Criteria	Description	Score		
		Low	Med	High
<b>Value</b>				
Landscape value (designations)	Listed Penlasgarn farmhouse in centre of the area. Small scattered ancient woodland sites. SINC on small farm to southwest and open grassland to southeast corner of area.		Med	
Visual/sensory	LANDMAP overall evaluation			High
Historic value	LANDMAP overall evaluation			High
Habitats value	LANDMAP overall evaluation		Med	
Geological value	LANDMAP overall evaluation		Med	
Visual value (key views/vistas)	Shared boundary to east with BBNP Park. Views across only available from ridgeline.		Med	
Aesthetic, perceptual, experiential	A moderate sense of place, with settled perceived qualities.		Med	

### Landscape Sensitivity

Summary of Sensitivity - Wind	Assessed Sensitivity				
The assessment identifies that the landscape is of very high sensitivity, the strong landscape character of the area would be adversely affected by development of this type.	V Low	Low	Med	High	V High

Summary of Sensitivity - Solar	Assessed Sensitivity				
The landscape is assessed as of high sensitivity with low tolerance to change of this type without adverse impacts on landscape character.	V Low	Low	Med	High	V High



## Guidance on Siting

The following advice should be considered for renewables development within this landscape unit:

### Wind turbines

- Consider opportunities to use local topography and woodlands to partially screen turbines from wider views.
- Respect the setting of Penlasgarn Farm listed building.
- Site turbines away from individual residences and settlement edges.

### Solar PV

- Consider using existing woodland and local topography to screen solar development from wider views.
- Consider opportunities to site solar development within existing field boundaries, or where these can be enhanced as part of the development.
- Only site solar farms within SINCs where their management can be consistent with management objectives of SINC.
- Respect the setting of Penlasgarn Farm listed building.

Any development should be subject to a detailed environmental impact assessment including landscape, cultural heritage and biodiversity as a minimum.

## Landscape capacity

Total area of LAU: 261 Ha.

### Wind turbines

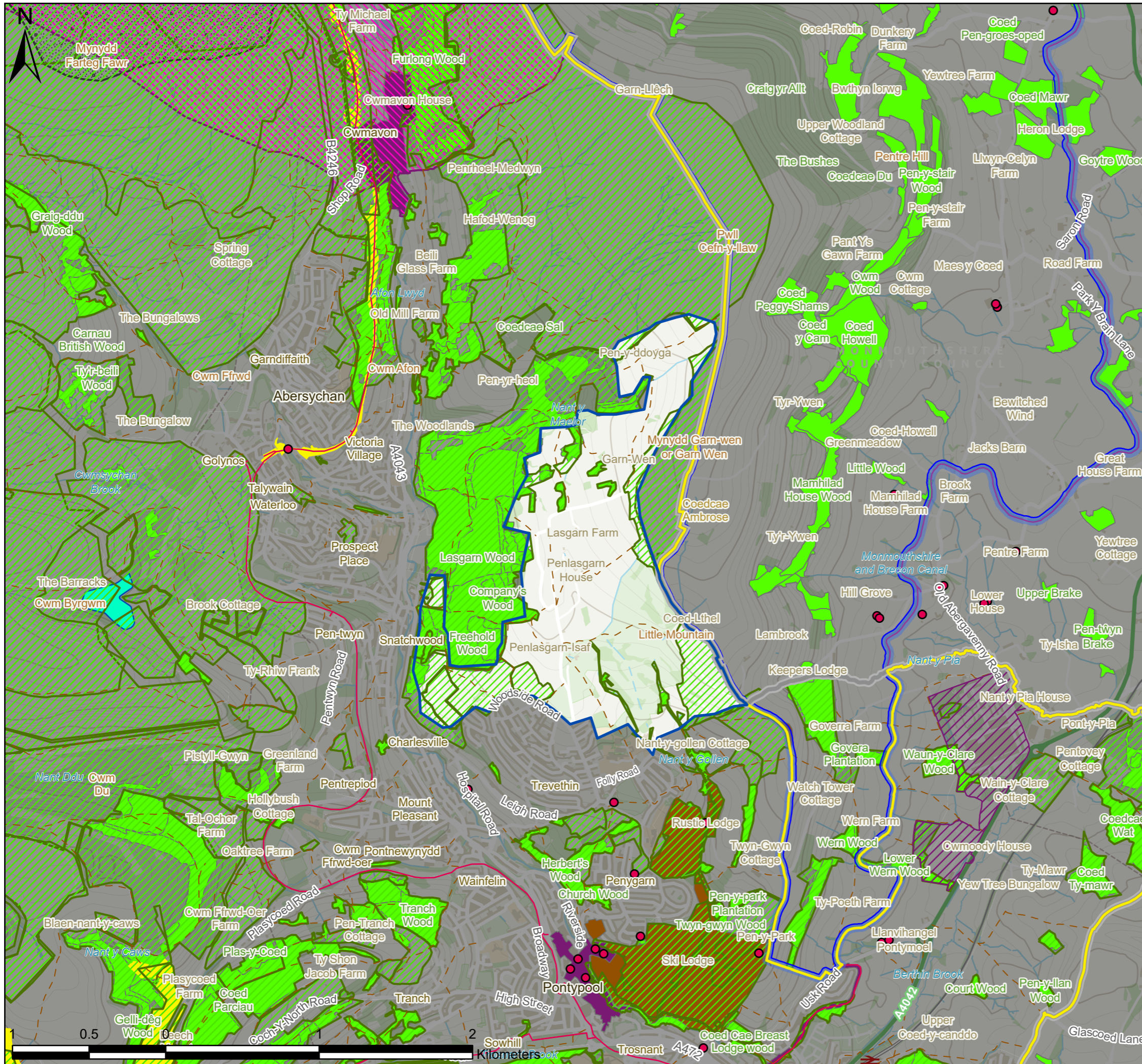
There is no existing wind turbine development in the landscape unit. The area has very high sensitivity to wind development. There may be opportunities to site individual or a single small group of turbines in this area, for example on lower slopes near the golf course, with care to avoid cumulative effects or visual impacts on BBNP, following the guidelines above.

### Solar PV

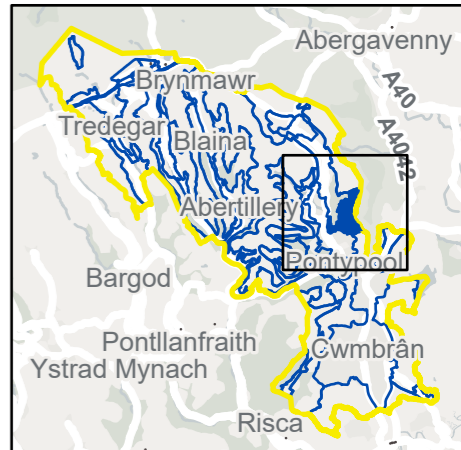
There is no existing solar development in this landscape unit. The landscape sensitivity is high. There may be potential to site 1-2 small-scale solar developments in this area, taking care to avoid cumulative effects and following the guidance above.

For Local Landscape Constraints see Figure 7.53.1





- Listed Buildings
- ▭ Landscape Area Unit
- ▭ Study Area
- ▭ Local Authorities
- ▭ Brecon Beacons National Park
- ▨ Known built development since LANDMAP assessment
- National Cycle Network
- - - BGCBC and TCBC Public Rights of Way
- ▨ Sites of Special Scientific Interest
- ▨ BGCBC and TCBC Sites of Importance for Nature Conservation
- ▨ Blaenavon World Heritage Site
- ▨ Historic Landscapes
- ▨ Conservation Areas
- ▨ Scheduled Monuments
- ▨ Historic Parks and Gardens
- ▨ Local Nature Reserves
- ▨ Ancient Woodland



P3	FI	28/10/2021	Client feedback	TW	ZS	LC
P2	FI	06/07/2021	Client feedback	TW	ZS	LC
P1	S3	10/06/2021	First issue	TW	ZS	LC
<b>V.</b>	<b>S.</b>	<b>Date</b>	<b>Description</b>	<b>B.</b>	<b>C.</b>	<b>A.</b>

• Environmental Consultants  
 • Planners  
 • Landscape Architects  
 • Landscape Managers  
 • Urban Designers  
 • Ecologists



10 Park Grove, Cardiff, CF10 3BN • 02920 228966 • admin@tacp.co.uk

**Blaenau Gwent and Torfaen County Borough Councils**  
**Sensitivity and Capacity Study for Renewable Energy Development**  
 Figure 7.53.1  
 LAU 53 Landscape Constraints (Sheet 1 of 1)

Drawing no.: 61007\_DWG\_F7-53-1LAU53



# LAU 55: PONTYPOOL PARK & ENVIRONS

## Susceptibility to Wind and Solar development

Combined summary of landscape susceptibility

Criteria	Description	Score		
		Low	Med	High
<b>Landscape susceptibility</b>				
Scale	Large scale	Yellow		
Landform	Rolling lowlands			Red
Landcover	Agricultural fields with deteriorating hedgerow boundaries. Extensive open woodlands and individual trees, particularly within Pontypool Park which includes amenity grassland as well as open meadows and woodland.			Red
Built environment	Public amenity space and buildings associated with Pontypool Park. Scattered farmsteads, local roads.			Red
<b>Visual susceptibility</b>				
Skylines and settings	Historic parkland with folly and other buildings in the landscape.			Red
Movement	Infrequent activity.		Orange	
Visibility, quality of views	Open landscape pattern, with some enclosure offered by woodland and valley landform of western part. Eastern part more open and widely visible.		Orange	
Views in/out	Attractive views both in and out with some detractive views out.			Red
Typical receptors	Residents within the area and north-eastern fringes of Pontypool. Recreational users of the park and PRow in the wider countryside. Canal users and Cyclists using NCN Route 49, Land workers. Vehicle travellers on A4042 Usk road in adjacent landscape to the east.			Red
Scenic quality and character	Moderate scenic quality and landscape character and high integrity.		Orange	

Criteria	Description	Score		
		Low	Med	High
Landscape value (designations)	Pontypool Park is a Registered Historic Park, including five listed structures and covered by SINC. Two listed buildings at Twyn-Gwyn Farm. Large tracts of ancient woodland – particularly to west. Further SINC on woodlands and open grassland in north. Pontypool Conservation Area is adjacent to the southwest of the area, and BBNP includes the central north-south shallow valley which divides it in two.		Orange	
Visual/sensory	LANDMAP overall evaluation		Orange	
Historic value	LANDMAP overall evaluation			Red
Habitats value	LANDMAP overall evaluation		Orange	
Geological value	LANDMAP overall evaluation		Orange	
Visual value (key views/vistas)	Brecon Beacons National Park enters the centre of the area, with Monmouthshire & Brecon canal forming its eastern boundary. Intermittent intervisibility with this eastern side and from the lane along the top of the ridge forming the western boundary.			Red
Aesthetic, perceptual, experiential	A moderate sense of place, with settled perceived qualities.		Orange	

## Landscape Sensitivity

Summary of Sensitivity - Wind	Assessed Sensitivity				
The assessment identifies that the landscape is of high sensitivity, the landscape character of the area would only be able to accommodate development of this type in limited situations.	V Low	Low	Med	High	V High
					Red

Summary of Sensitivity - Solar	Assessed Sensitivity				
The landscape is assessed as of high sensitivity with low tolerance to change of this type without adverse impacts on landscape character.	V Low	Low	Med	High	V High
				Red	

## Guidance on Siting

The historic parkland character and public amenity value of Pontypool Park in the southwest of this landscape unit suggest that it would be inappropriate to site commercial renewables within that site. The following advice should be considered for renewables development elsewhere within this landscape unit:

### Wind turbines

- Consider opportunities to use local topography and woodlands to partially screen turbines from wider views.
- Avoid siting wind turbines where they will be visually intrusive from BBNP.
- Respect the setting of listed buildings and the Monmouthshire & Brecon Canal.
- Respect the setting of Pontypool Park and Conservation Area.
- Site turbines away from individual residences and settlement edges.

### Solar PV

- Consider using existing woodland and local topography to screen solar development from wider views.
- Avoid siting solar panels where they will be visually intrusive, through reflection or glare, from BBNP.
- Consider opportunities to site solar development within existing field boundaries, or where these can be enhanced as part of the development.
- Only site solar farms within SINCs where their management can be consistent with management objectives of SINC.
- Respect the setting of listed buildings and the Monmouthshire & Brecon Canal.
- Respect the setting of Pontypool Park and Conservation Area.

Any development should be subject to a detailed environmental impact assessment including landscape, cultural heritage and biodiversity as a minimum.

## Landscape capacity

Total area of LAU: 228 Ha.

### Wind turbines

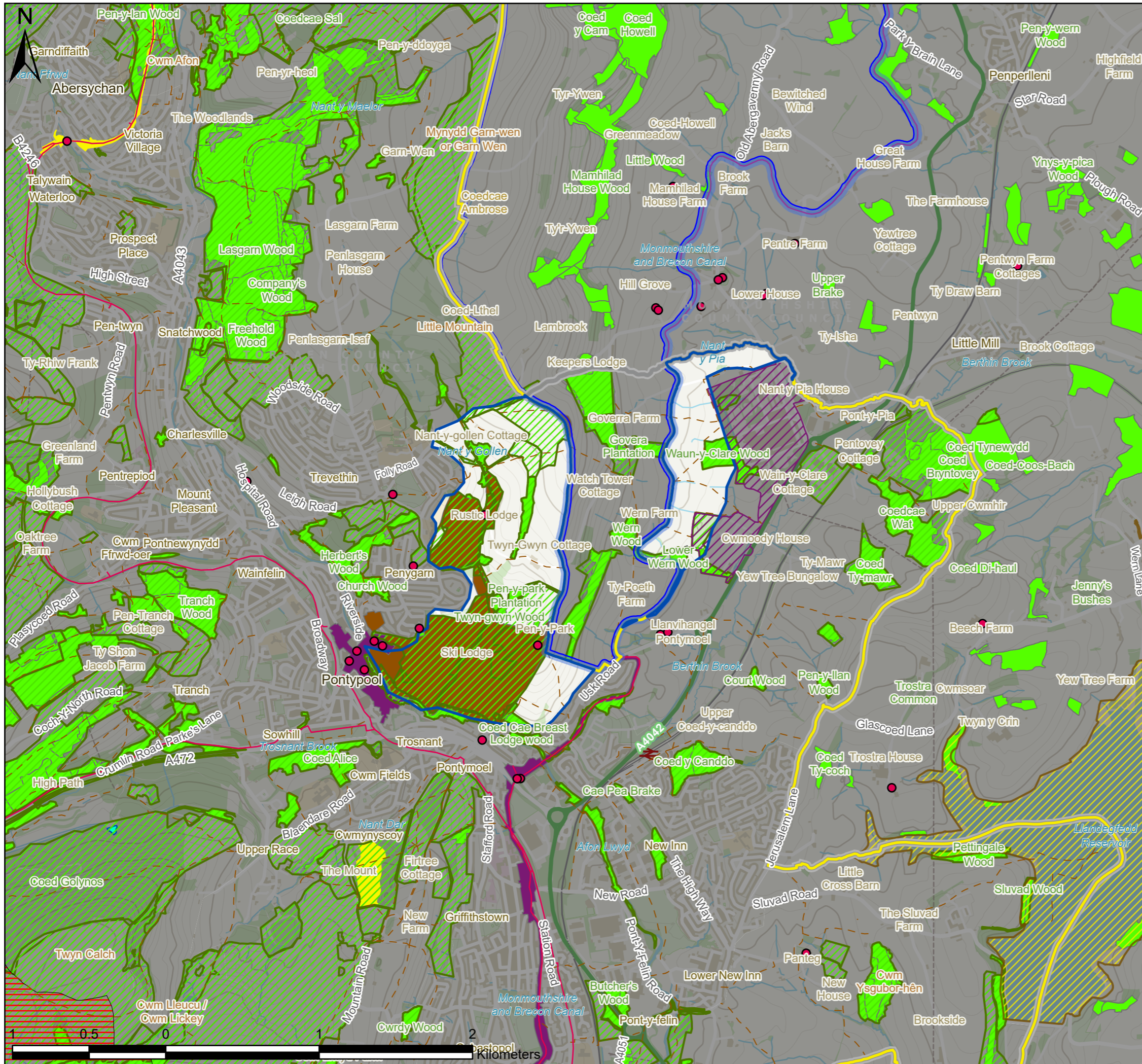
There is no existing wind turbine development in the landscape unit. The area has very high sensitivity to wind development. There may be opportunities to site individual or a single small group of turbines in this area, perhaps in the valley to the north of the park, with care to avoid cumulative effects or visual impacts on BBNP or Pontypool Park, following the guidelines above.

### Solar PV

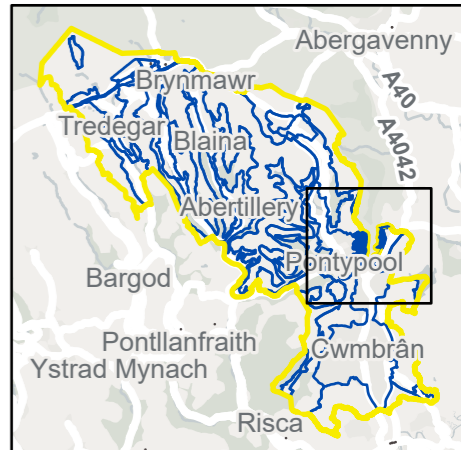
There is no existing solar development in this landscape unit. The landscape sensitivity is high. There may be potential to site 1-2 small-scale solar developments in this area, taking care to avoid cumulative effects and following the guidance above.

For Local Landscape Constraints see Figure 7.55.1





- Listed Buildings
- ▭ Landscape Area Unit
- ▭ Study Area
- ▭ Local Authorities
- ▭ Brecon Beacons National Park
- ▨ Known built development since LANDMAP assessment
- National Cycle Network
- - - BGCBC and TCBC Public Rights of Way
- ▨ Pre-Assessed Areas for Wind Energy
- ▨ Sites of Special Scientific Interest
- ▨ BGCBC and TCBC Sites of Importance for Nature Conservation
- ▨ Conservation Areas
- ▨ Scheduled Monuments
- ▨ Historic Parks and Gardens
- ▨ Local Nature Reserves
- ▨ Ancient Woodland



P3	FI	28/10/2021	Client feedback	TW	ZS	LC
P2	FI	06/07/2021	Client feedback	TW	ZS	LC
P1	S3	10/06/2021	First issue	TW	ZS	LC
V.	S.	Date	Description	B.	C.	A.

• Environmental Consultants  
 • Planners  
 • Landscape Architects  
 • Landscape Managers  
 • Urban Designers  
 • Ecologists



10 Park Grove, Cardiff, CF10 3BN • 02920 228966 • admin@tacp.co.uk

**Blaenau Gwent and Torfaen County Borough Councils**  
**Sensitivity and Capacity Study for Renewable Energy Development**  
 Figure 7.55.1  
 LAU 55 Landscape Constraints (Sheet 1 of 1)

Drawing no.: 61007\_DWG\_F7-55-1LAU55



## LAU 56: A4042 USK ROAD CORRIDOR

### Susceptibility to Wind and Solar development

Combined summary of landscape susceptibility

Criteria	Description	Score		
		Low	Med	High
<b>Landscape susceptibility</b>				
Scale	Medium scale			
Landform	Shallow valley			
Landcover	Pasture with hedge and tree boundaries, some deteriorating. Small blocks of woodland screening.			
Built environment	Medium and large scale industrial estates, derelict sites, A4042 Usk Road, railway line (eastern boundary)			
<b>Visual susceptibility</b>				
Skylines and settings	Existing large scale development			
Movement	Constant activity.			
Visibility, quality of views	An open landscape with views in from surrounding areas. Some enclosure formed by treed hedgerows and woodlands.			
Views in/out	Attractive views out but detractive views both in and out.			
Typical receptors	Recreational users of PRow. Canal users and Cyclists using NCN Route 49, Land workers and those working in industrial estates. Road users on A4042, rail passengers. Residential receptors from north-eastern fringes of Pontypool and New Inn.			
Scenic quality and character	Moderate scenic quality, low landscape character and moderate integrity.			

Criteria	Description	Score		
		Low	Med	High
Landscape value (designations)	Clusters of listed features at Court Farm and Church of St Michael and All Angels, both to the south of the area. Also former nylon spinners factory at the Mamhilad Park Industrial Estate and Monachty Farmhouse in the north of the area. Small patches of ancient woodland sites, covered by SINC designation. Another SINC to east of road currently has Industrial Estate under construction on it.			
Visual/sensory	LANDMAP overall evaluation			
Historic value	LANDMAP overall evaluation			
Habitats value	LANDMAP overall evaluation			
Geological value	LANDMAP overall evaluation			
Visual value (key views/vistas)	Brecon Beacons National Park shares a boundary (the Mon & Brecon Canal) with the southwest of the area, near Ty-Poeth Farm. The National Park is elevated above the area at this point and likely to enjoy good intervisibility.			
Aesthetic, perceptual, experiential	A weak sense of place. No perceptual qualities recorded			

### Landscape Sensitivity

Summary of Sensitivity - Wind	Assessed Sensitivity				
The assessment identifies that the landscape is of medium sensitivity, the landscape character of the area would be able to accommodate development of this type in in some defined situations.	V Low	Low	Med	High	V High

Summary of Sensitivity - Solar	Assessed Sensitivity				
The landscape is assessed as of medium sensitivity with some resilience to change of this type without adverse impacts on landscape character.	V Low	Low	Med	High	V High



## Guidance on Siting

The following advice should be considered for renewables development within this landscape unit:

### Wind turbines

- Consider opportunities to site turbines adjacent to existing industrial estates.
- Consider opportunities to arrange wind turbines along the road or railway corridor but avoid the cumulative effect of a 'tunnel' of turbines.
- Avoid siting wind turbines where they will be visually intrusive from BBNP.
- Respect the setting of listed buildings and the Monmouthshire & Brecon Canal.
- Site turbines away from individual residences and settlement edges.

### Solar PV

- Consider using existing woodland and local topography to screen solar development from wider views.
- Avoid siting solar panels where they will be visually intrusive, through reflection or glare, from BBNP.
- Consider opportunities to site solar development within existing field boundaries, or where these can be enhanced as part of the development.
- Respect the setting of listed buildings and the Monmouthshire & Brecon Canal.

Any development should be subject to a detailed environmental impact assessment including landscape, cultural heritage and biodiversity as a minimum.

## Landscape capacity

Total area of LAU: 172 Ha.

### Wind turbines

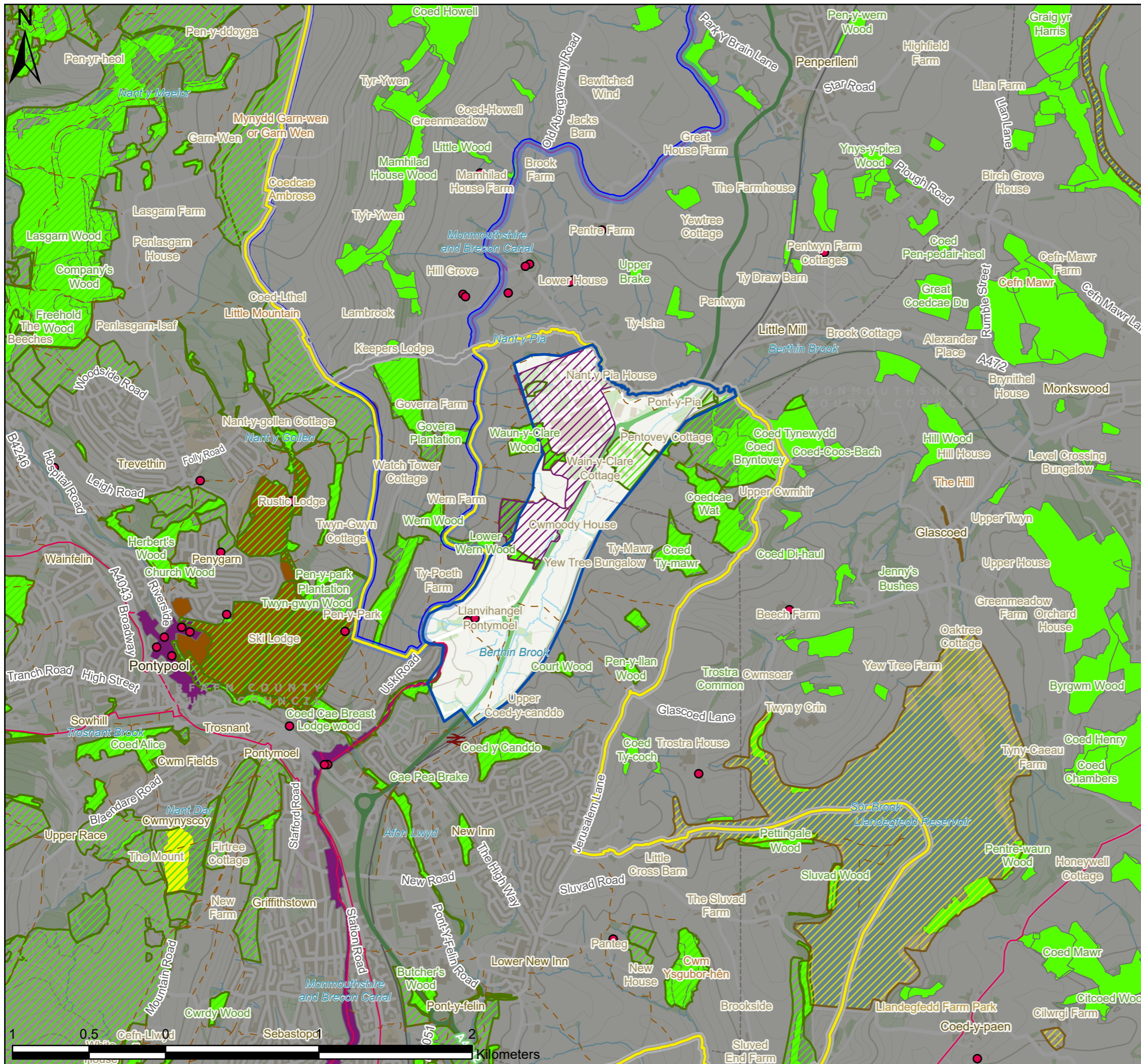
There is no existing wind turbine development in the landscape unit. The area has medium sensitivity to wind development. There may be opportunities to site small-medium sized groups of turbines in this area, with care to avoid cumulative effects or visual impacts on BBNP, following the guidelines above.

### Solar PV

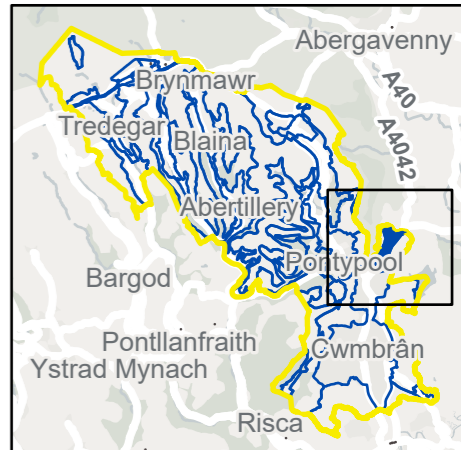
There is no existing solar development in this landscape unit. There is a small-scale solar farm immediately to the east, in two fields beyond the railway line. The landscape sensitivity is medium. There may be potential to site 1-2 similar small-scale solar developments in this area, taking care to avoid cumulative effects and following the guidance above.

For Local Landscape Constraints see Figure 7.56.1





- Listed Buildings
- ▭ Landscape Area Unit
- ▭ Study Area
- ▭ Local Authorities
- ▭ Brecon Beacons National Park
- ▨ Known built development since LANDMAP assessment
- National Cycle Network
- - - BGCBC and TCBC Public Rights of Way
- ▨ Sites of Special Scientific Interest
- ▨ Special Areas of Conservation
- ▨ BGCBC and TCBC Sites of Importance for Nature Conservation
- ▭ Conservation Areas
- ▭ Historic Parks and Gardens
- ▭ Local Nature Reserves
- ▭ Ancient Woodland



P3	FI	28/10/2021	Client feedback	TW	ZS	LC
P2	FI	06/07/2021	Client feedback	TW	ZS	LC
P1	S3	10/06/2021	First issue	TW	ZS	LC
V.	S.	Date	Description	B.	C.	A.

- Environmental Consultants
- Planners
- Landscape Architects
- Landscape Managers
- Urban Designers
- Ecologists



**TACP**

10 Park Grove, Cardiff, CF10 3BN • 02920 228966 • admin@tacp.co.uk

**Blaenau Gwent and Torfaen County Borough Councils**  
**Sensitivity and Capacity Study for Renewable Energy Development**

Figure 7.56.1  
 LAU 56 Landscape Constraints (Sheet 1 of 1)

Drawing no.: 61007\_DWG\_F7-56-1LAU56



## LAU 57: LLANFIHANGEL PONT-Y-MOEL EAST OF RAILWAY

### Susceptibility to Wind and Solar development

Combined summary of landscape susceptibility

Criteria	Description	Score		
		Low	Med	High
<b>Landscape susceptibility</b>				
Scale	Large scale	Low		
Landform	Rolling lowlands			High
Landcover	Agricultural fields with deteriorating hedgerow boundaries. Scattered woodland with large, wooded area to north			High
Built environment	Scattered farmsteads. Go Karting centre, solar farm, railway line forms western boundary.		Med	
<b>Visual susceptibility</b>				
Skylines and settings	Undeveloped ridge forms boundary with Monmouthshire			High
Movement	Infrequent activity.		Med	
Visibility, quality of views	An open landscape, contained by the shallow valley topography, but with views available from nearby settlements and transport routes.		Med	
Views in/out	Attractive views both in and out with some detractive views out.			High
Typical receptors	Residents within the area and northern fringes of New Inn. Recreational receptors (PRoW) Land workers. Drivers on A4042 in adjacent area to west, and railway passengers.			High
Scenic quality and character	Moderate scenic quality and landscape character and high integrity.		Med	

Criteria	Description	Score		
		Low	Med	High
<b>Value</b>				
Landscape value (designations)	Ty-Mawr Farmhouse listed building in centre of area. Multiple ancient woodland sites, with larger areas in north, also covered by SINCS.		Med	
Visual/sensory	LANDMAP overall evaluation		Med	
Historic value	LANDMAP overall evaluation			High
Habitats value	LANDMAP overall evaluation		Med	
Geological value	LANDMAP overall evaluation		Med	
Visual value (key views/vistas)	Occasional intervisibility with Brecon Beacons National Park on other side of valley – across road corridor.		Med	
Aesthetic, perceptual, experiential	A moderate sense of place, with settled perceived qualities.		Med	

### Landscape Sensitivity

Summary of Sensitivity - Wind	Assessed Sensitivity				
The assessment identifies that the landscape is of high/borderline very high, sensitivity, the landscape character of the area would only be able to accommodate development of this type in limited situations.	V Low	Low	Med	High	V High
				High	

Summary of Sensitivity - Solar	Assessed Sensitivity				
The landscape is assessed as of high sensitivity with low tolerance to change of this type without adverse impacts on landscape character.	V Low	Low	Med	High	V High
				High	



## Guidance on Siting

The following advice should be considered for renewables development within this landscape unit:

### Wind turbines

- Consider opportunities to use local topography and woodlands to partially screen turbines from wider views.
- Consider opportunities to align turbines with the railway corridor but avoid creating a cumulative 'tunnel' effect.
- Avoid siting wind turbines where they will be visually intrusive from BBNP.
- Respect the setting of the listed Ty-Mawr Farmhouse
- Site turbines away from individual residences and settlement edges.

### Solar PV

- Consider using existing woodland and local topography to screen solar development from wider views.
- Avoid siting solar panels where they will be visually intrusive, through reflection or glare, from BBNP.
- Consider opportunities to site solar development within existing field boundaries, or where these can be enhanced as part of the development.
- Respect the setting of the listed Ty-Mawr Farmhouse

Any development should be subject to a detailed environmental impact assessment including landscape, cultural heritage and biodiversity as a minimum.

## Landscape capacity

Total area of LAU: 183 Ha.

### Wind turbines

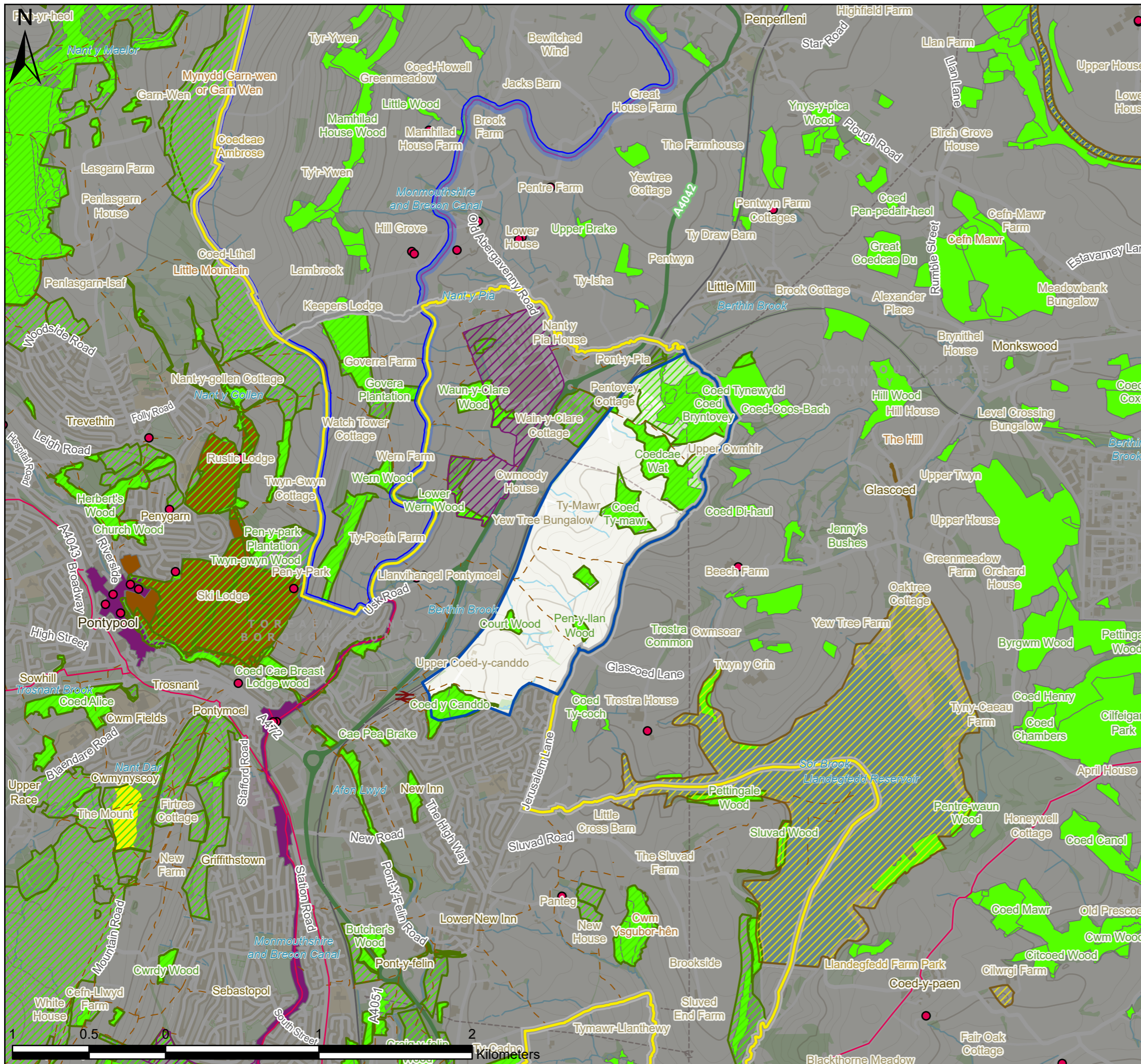
There is no existing wind turbine development in the landscape unit. The area has high sensitivity to wind development. There may be opportunities to site individual or a single small group of turbines in this area, most likely in the northern section in the context of other large-scale development and furthest from BBNP, following the guidelines above.

### Solar PV

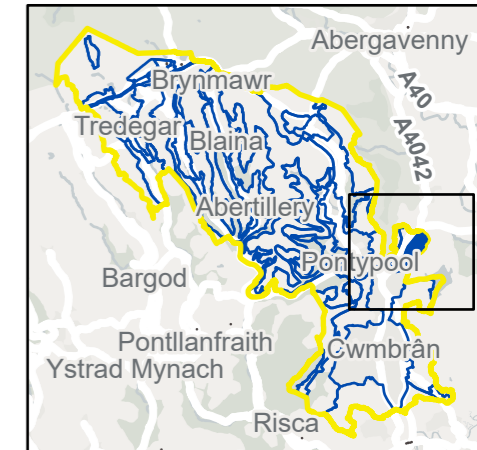
There is one existing small scale solar farm in this landscape unit. The landscape sensitivity is high. There may be potential to site 1 more small-scale solar development in this area, taking care to avoid cumulative effects and following the guidance above.

For Local Landscape Constraints see Figure 7.57.1





- Listed Buildings
- Landscape Area Unit
- Study Area
- Local Authorities
- Brecon Beacons National Park
- Known built development since LANDMAP assessment
- National Cycle Network
- BGCBC and TCBC Public Rights of Way
- Sites of Special Scientific Interest
- Special Areas of Conservation
- BGCBC and TCBC Sites of Importance for Nature Conservation
- Conservation Areas
- Historic Parks and Gardens
- Local Nature Reserves
- Ancient Woodland



P3	FI	28/10/2021	Client feedback	TW	ZS	LC
P2	FI	06/07/2021	Client feedback	TW	ZS	LC
P1	S3	10/06/2021	First issue	TW	ZS	LC
V.	S.	Date	Description	B.	C.	A.

- Environmental Consultants
- Planners
- Landscape Architects
- Landscape Managers
- Urban Designers
- Ecologists

**TACP**

10 Park Grove, Cardiff, CF10 3BN • 02920 228966 • admin@tacp.co.uk

**Blaenau Gwent and Torfaen County Borough Councils**  
**Sensitivity and Capacity Study for Renewable Energy Development**

Figure 7.57.1  
 LAU 57 Landscape Constraints (Sheet 1 of 1)

Drawing no.: 61007\_DWG\_F7-57-1LAU57



# LAU 58: LLANTARNAM ABBEY & ENVIRONS

## Susceptibility to Wind and Solar development

Combined summary of landscape susceptibility

Criteria	Description	Score		
		Low	Med	High
<b>Landscape susceptibility</b>				
Scale	Medium scale			
Landform	Lowland valley			
Landcover	Large, predominantly grassed fields with deteriorating hedgerow boundaries. Strong woodland corridors, particularly along Afon Llwyd near northern boundary. Scattered parkland trees and formal gardens around abbey.			
Built environment	Scattered farmsteads. Historic abbey within Conservation Area. Railway with associated infrastructure along northern boundary. Local and access roads. Pylons, A4042 crosses area in southwest corner.			
<b>Visual susceptibility</b>				
Skylines and settings	Undulating landscape		X	
Movement	Occasional activity.			
Visibility, quality of views	An open landscape, largely contained by the shallow valley topography and large blocks of woodland. More open south of Malthouse Road.			
Views in/out	Few attractive views in or out, with some detractive features in outward views			
Typical receptors	Residents of Llantarnam Abbey and grounds. Farm residents and workers. Few PRoW, largely not publicly accessible. Road users.			
Scenic quality and character	Low scenic quality and landscape character and moderate integrity.			

Criteria	Description	Score		
		Low	Med	High
<b>Value</b>				
Landscape value (designations)	Llantarnam Abbey is a registered historic park and garden. Llantarnam Conservation Area covers abbey and historic settlement to the west. Eight listed features around abbey building, also tithe barn is a Scheduled Monument. Large SINCC over park grounds and one to the south of A4042. Several large ancient woodland sites.			
Visual/sensory	LANDMAP overall evaluation			
Historic value	LANDMAP overall evaluation			
Habitats value	LANDMAP overall evaluation			
Geological value	LANDMAP overall evaluation			
Visual value (key views/vistas)	Potential intervisibility with a Scheduled Monument to the south, Castle Mound east of Graig wood.			
Aesthetic, perceptual, experiential	A weak sense of place, with perceptual qualities not recorded.			

## Landscape Sensitivity

Summary of Sensitivity - Wind	Assessed Sensitivity				
The assessment identifies that the landscape is of medium sensitivity, the landscape character of the area would be able to accommodate development of this type in in some defined situations.	V Low	Low	Med	High	V High

Summary of Sensitivity - Solar	Assessed Sensitivity				
The landscape is assessed as of medium sensitivity with some resilience to change of this type without adverse impacts on landscape character.	V Low	Low	Med	High	V High



## Guidance on Siting

The Registered Landscape Park of Special Historic Interest at Llantarnam Abbey is unlikely to accommodate renewable energy development without seriously compromising its historic character. The following advice should be considered for renewables development within other parts of this landscape unit:

### Wind turbines

- Consider opportunities to use local topography and woodlands to partially screen turbines from wider views.
- Consider opportunities to align turbines with the A4042 road corridor but avoid creating a cumulative 'tunnel' effect.
- Respect the setting of Llantarnam Abbey and associated landscape.
- Site turbines away from individual residences and settlement edges.

### Solar PV

- Consider using existing woodland and local topography to screen solar development from wider views.
- Consider opportunities to site solar development within existing field boundaries, or where these can be enhanced as part of the development.
- Respect the setting of Llantarnam Abbey and associated landscape.
- Only site solar farms within SINC where their management can be consistent with management objectives of SINC.

Any development should be subject to a detailed environmental impact assessment including landscape, cultural heritage and biodiversity as a minimum.

## Landscape capacity

Total area of LAU: 145 Ha.

### Wind turbines

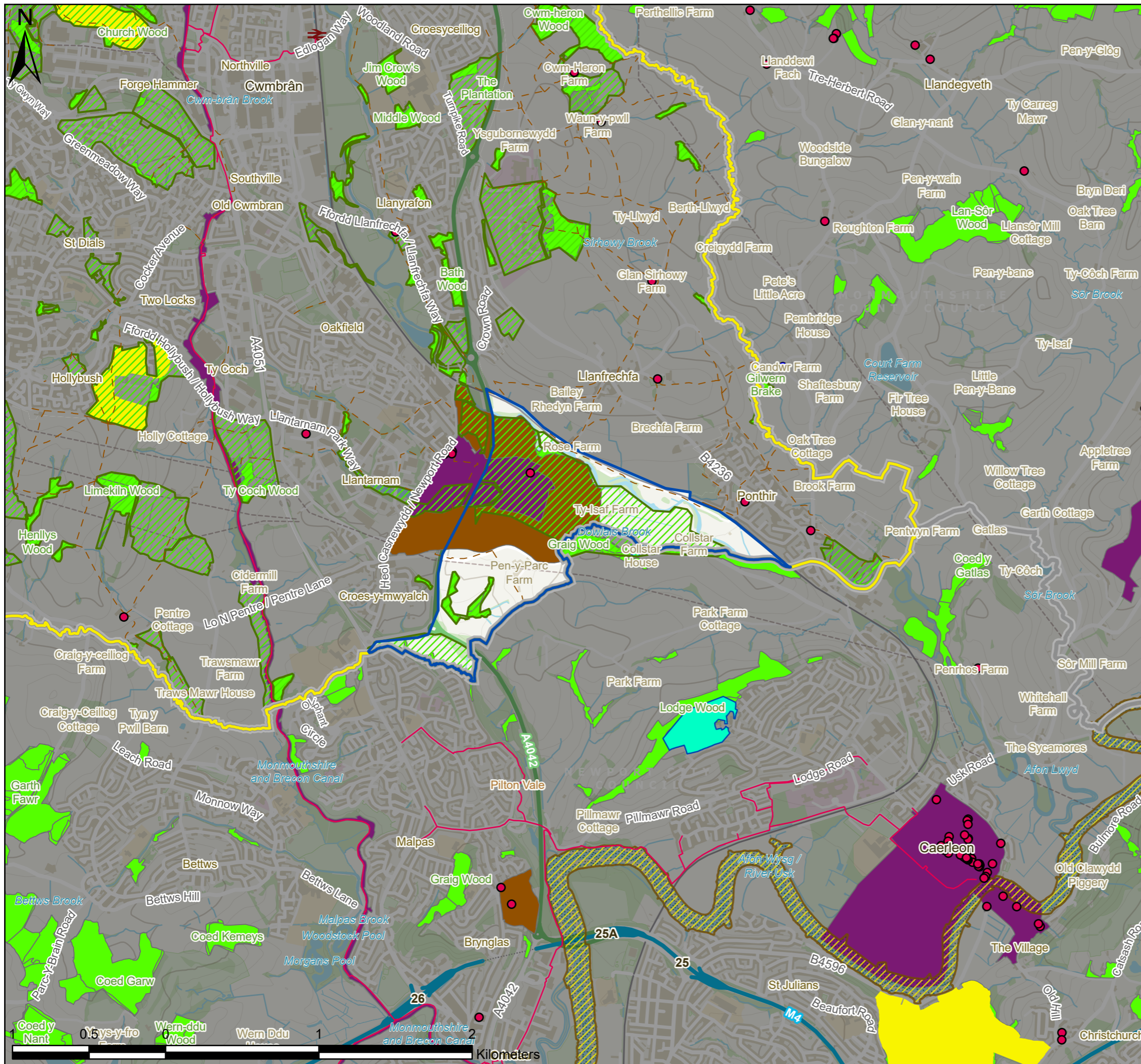
There is no existing wind turbine development in the landscape unit. The area has medium sensitivity to wind development. There may be opportunities to site individual or a single small-medium scale group of turbines in this area, potentially to the south where the landscape is already under the influence of the A4042, following the guidelines above.

### Solar PV

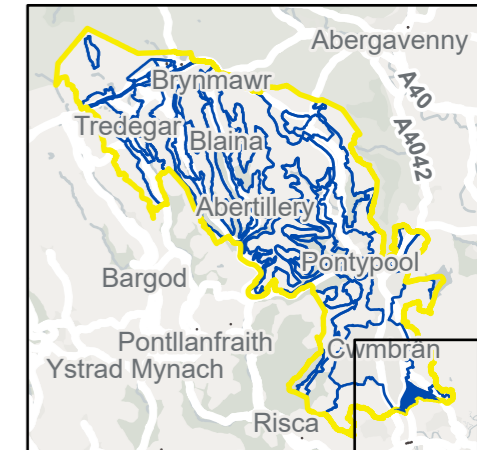
There is no existing solar development in this landscape unit. There is a small-scale solar farm to the south of the area within Newport. Although this is unlikely to contribute to cumulative effects due to intervening landform. The landscape sensitivity is medium. There may be potential to site 1-2 small-scale solar developments in this area, following the guidance above.

For Local Landscape Constraints see Figure 7.58.1





- Existing Wind Turbines
- Listed Buildings
- ▭ Landscape Area Unit
- ▭ Study Area
- ▭ Local Authorities
- National Cycle Network
- - - BGCBC and TCBC Public Rights of Way
- ▨ Sites of Special Scientific Interest
- ▨ Special Areas of Conservation
- ▨ BGCBC and TCBC Sites of Importance for Nature Conservation
- ▨ Conservation Areas
- ▨ Scheduled Monuments
- ▨ Historic Parks and Gardens
- ▨ Local Nature Reserves
- ▨ Ancient Woodland



P3	FI	28/10/2021	Client feedback	TW	ZS	LC
P2	FI	06/07/2021	Client feedback	TW	ZS	LC
P1	S3	10/06/2021	First issue	TW	ZS	LC
V.	S.	Date	Description	B.	C.	A.

• Environmental Consultants  
 • Planners  
 • Landscape Architects  
 • Landscape Managers  
 • Urban Designers  
 • Ecologists

  
**TACP**

10 Park Grove, Cardiff, CF10 3BN • 02920 228966 • admin@tacp.co.uk

**Blaenau Gwent and Torfaen County Borough Councils**  
**Sensitivity and Capacity Study for Renewable Energy Development**  
 Figure 7.58.1  
*LAU 58 Landscape Constraints (Sheet 1 of 1)*

Drawing no.: 61007\_DWG\_F7-58-1LAU58



# LAU 59: COUNTRYSIDE EAST OF CWMBRAN

## Susceptibility to Wind and Solar development

Combined summary of landscape susceptibility

Criteria	Description	Score		
		Low	Med	High
<b>Landscape susceptibility</b>				
Scale	Large scale	Low		
Landform	Rolling lowlands			High
Landcover	Agricultural fields with largely intact boundaries of hedgerows and trees. Scattered woodland, occasional scrub.		Med	
Built environment	Scattered farmsteads and small, nucleated settlements. A4042 passes along western boundary and through northern section of area north to south. Garden centre and crematorium near Treherbert junction. Overhead lines. Large water treatment works near Sluvad in the north. The Grange Hospital site on western edge of area.		Med	
<b>Visual susceptibility</b>				
Skylines and settings	Undulating landform.		Med	
Movement	Occasional activity.			High
Visibility, quality of views	An open landscape with views available from the urban edge of Cwmbran as well as surrounding hilltops which enclose it from the east.		Med	
Views in/out	Attractive views both in and out with some detractive views out towards the A4042 and urban edge.			High
Typical receptors	Residents within the area and eastern fringes of Cwmbran. Recreational receptors (frequent PRow), Land workers. Drivers on A4042 to west, and railway passengers on southern boundary.			High
Scenic quality and character	Moderate scenic quality with high landscape character and integrity.			High

Criteria	Description	Score		
		Low	Med	High
<b>Value</b>				
Landscape value (designations)	Listed buildings related to farms and places of worship scattered throughout. Small and medium ancient woodland sites also throughout, all with SINC status. The Llandegfedd reservoir forms the northeast boundary of the area and is a SSSI.		Med	
Visual/sensory	LANDMAP overall evaluation			High
Historic value	LANDMAP overall evaluation			High
Habitats value	LANDMAP overall evaluation		Med	
Geological value	LANDMAP overall evaluation		Med	
Visual value (key views/vistas)	Potential intervisibility with Llantarnam Abbey to the south, also Candwr camp Scheduled Monument to the east.	Low		
Aesthetic, perceptual, experiential	A moderate sense of place, with settled and secluded perceived qualities.		Med	

## Landscape Sensitivity

Summary of Sensitivity - Wind	Assessed Sensitivity				
The assessment identifies that the landscape is of very high sensitivity, the strong landscape character of the area would be adversely affected by development of this type.	V Low	Low	Med	High	V High

Summary of Sensitivity - Solar	Assessed Sensitivity				
The landscape is assessed as of high sensitivity with low tolerance to change of this type without adverse impacts on landscape character.	V Low	Low	Med	High	V High

## Guidance on Siting

The following advice should be considered for renewables development within this landscape unit:

### Wind turbines

- Consider opportunities to use local topography and woodlands to partially screen turbines from wider views.
- Consider opportunities to align turbines with the A4042 and surrounding development but avoid creating a cumulative 'tunnel' effect.
- Respect the setting of listed buildings.
- Site turbines away from individual residences and settlement edges.

### Solar PV

- Consider using existing woodland and local topography to screen solar development from wider views.
- Consider opportunities to site solar development within existing field boundaries, or where these can be enhanced as part of the development.
- Respect the setting of listed buildings.

Any development should be subject to a detailed environmental impact assessment including landscape, cultural heritage and biodiversity as a minimum.

## Landscape capacity

Total area of LAU: 893 Ha.

### Wind turbines

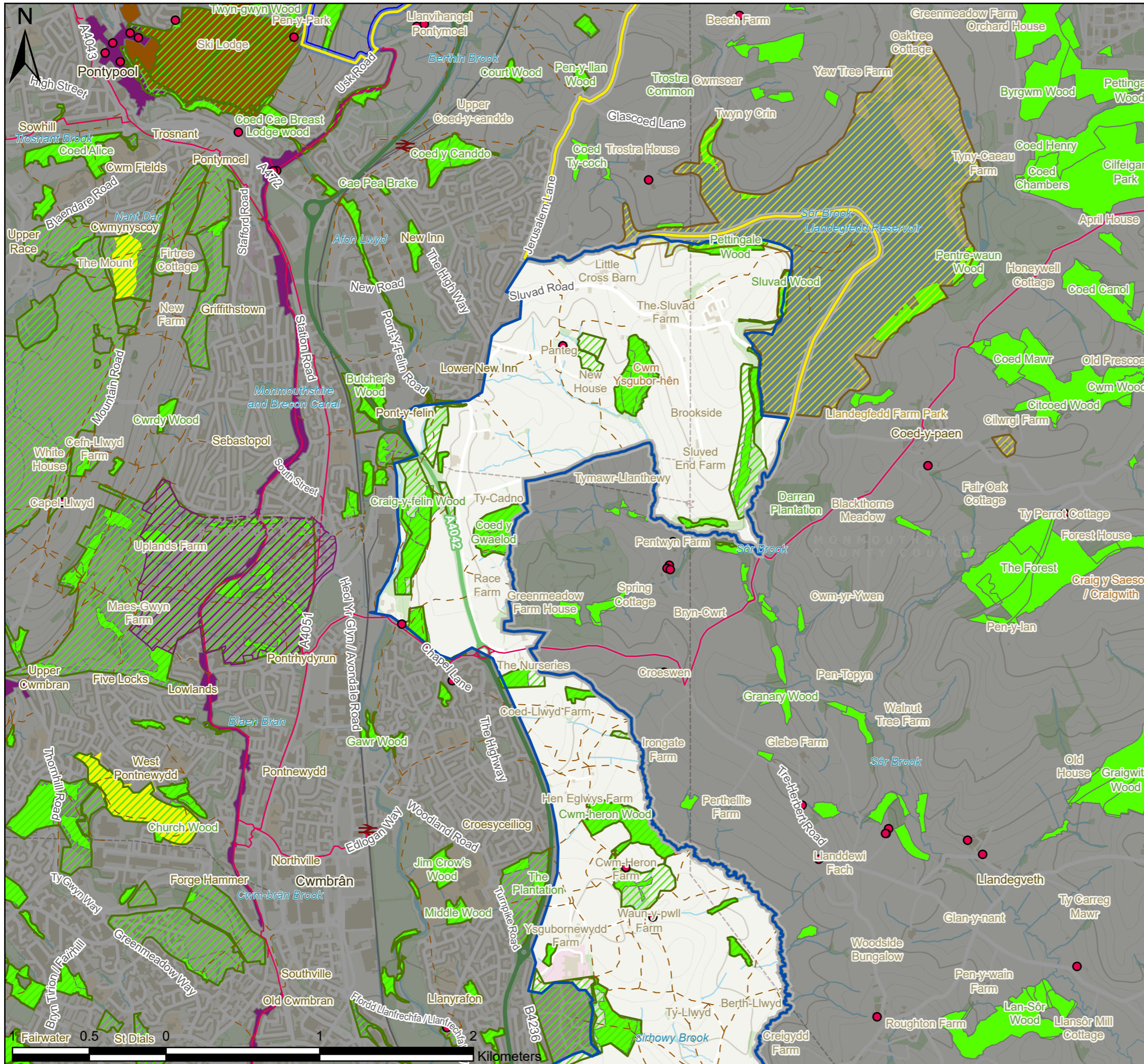
There is no existing wind turbine development in the landscape unit. The area has very high sensitivity to wind development. There may be opportunities to site a low number of individual or small groups of turbines in this area, given its large size. But sited carefully following the guidelines above and avoiding cumulative effects.

### Solar PV

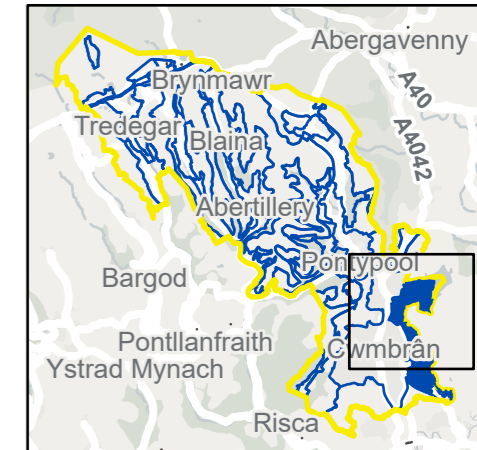
There is no existing solar development in this landscape unit. The landscape sensitivity is very high. There may be potential to site several small-scale solar developments in this area, given its large size and sometimes substantial boundary vegetation. Great care should be taken to avoid cumulative effects, for example when travelling along the A4042, and siting should follow the guidance above.

For Local Landscape Constraints see Figure 7.59.1 and 7.59.2





- Listed Buildings
- ▭ Landscape Area Unit
- ▭ Study Area
- ▭ Local Authorities
- ▭ Brecon Beacons National Park
- ▨ Known built development since LANDMAP assessment
- National Cycle Network
- - - BGCBC and TCBC Public Rights of Way
- ▨ Sites of Special Scientific Interest
- ▨ BGCBC and TCBC Sites of Importance for Nature Conservation
- ▨ Conservation Areas
- ▨ Historic Parks and Gardens
- ▨ Local Nature Reserves
- ▨ Ancient Woodland



P3	FI	28/10/2021	Client feedback	TW	ZS	LC
P2	FI	06/07/2021	Client feedback	TW	ZS	LC
P1	S3	10/06/2021	First issue	TW	ZS	LC
V.	S.	Date	Description	B.	C.	A.

- Environmental Consultants
- Planners
- Landscape Architects
- Landscape Managers
- Urban Designers
- Ecologists



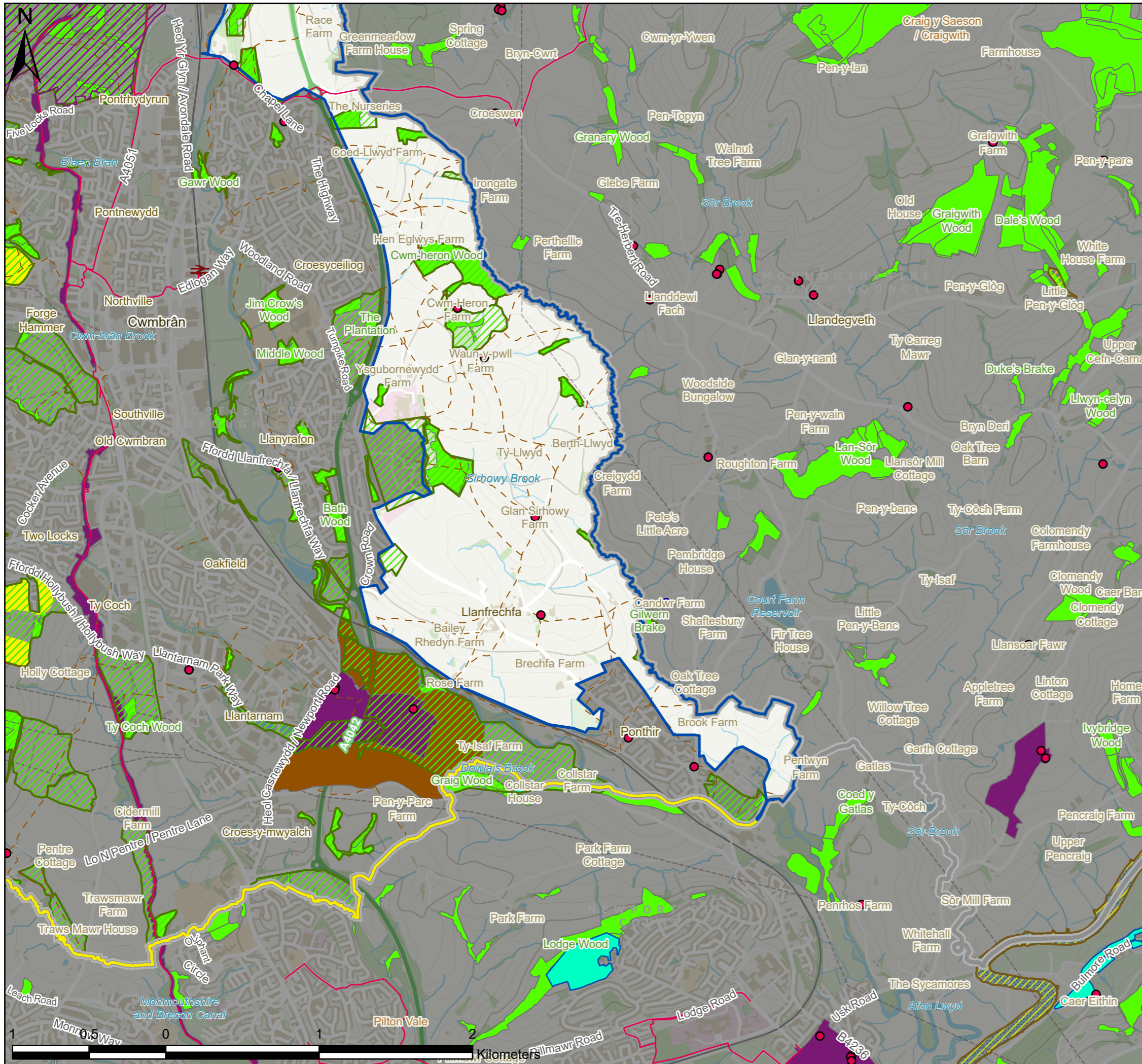
10 Park Grove, Cardiff, CF10 3BN • 02920 228966 • admin@tacp.co.uk

**Blaenau Gwent and Torfaen County Borough Councils**  
**Sensitivity and Capacity Study for Renewable Energy Development**

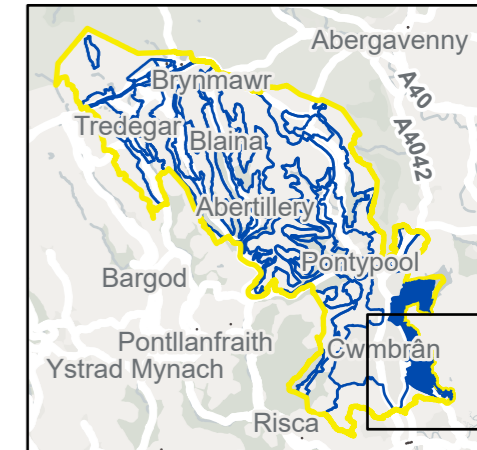
Figure 7.59.1  
 LAU 59 Landscape Constraints (Sheet 1 of 2)

Drawing no.: 61007\_DWG\_F7-59-1LAU59





- Existing Wind Turbines
- Listed Buildings
- ▭ Landscape Area Unit
- ▭ Study Area
- ▭ Local Authorities
- ▨ Known built development since LANDMAP assessment
- National Cycle Network
- - - BGCBC and TCBC Public Rights of Way
- ▨ Sites of Special Scientific Interest
- ▨ Special Areas of Conservation
- ▨ BGCBC and TCBC Sites of Importance for Nature Conservation
- ▨ Conservation Areas
- ▨ Scheduled Monuments
- ▨ Historic Parks and Gardens
- ▨ Local Nature Reserves
- ▨ Ancient Woodland



P3	FI	28/10/2021	Client feedback	TW	ZS	LC
P2	FI	06/07/2021	Client feedback	TW	ZS	LC
P1	S3	10/06/2021	First issue	TW	ZS	LC
<b>V.</b>	<b>S.</b>	<b>Date</b>	<b>Description</b>	<b>B.</b>	<b>C.</b>	<b>A.</b>

• Environmental Consultants  
 • Planners  
 • Landscape Architects  
 • Landscape Managers  
 • Urban Designers  
 • Ecologists



10 Park Grove, Cardiff, CF10 3BN • 02920 228966 • admin@tacp.co.uk

**Blaenau Gwent and Torfaen County Borough Councils**  
**Sensitivity and Capacity Study for Renewable Energy Development**  
 Figure 7.59.2  
 LAU 59 Landscape Constraints (Sheet 2 of 2)

Drawing no.: 61007\_DWG\_F7-59-2LAU59