

3 LANDSCAPE ASSESSMENT UNIT STATEMENTS

The assessment process is summarised in a Landscape Assessment Unit Statement for each LAU. These provide a summary of the GIS analysis refined by field analysis and professional judgment. This is followed by a section providing guidance on siting of new renewable energy development within the LAU and a description of the current renewable development in the area with an expectation of current and future capacity.

An indicative landscape capacity has been provided for each LAU. Each LAU statement is also accompanied by a figure or figures detailing the landscape constraints for each area with an overlap onto adjacent LAUs providing a clear initial understanding of the landscape context.

It should be noted that this study provides an assessment based on the current publicly available data and data provided by the client body at the time of writing (June 2021). Any future assessment for scheme specific developments should refer to the latest available data. Site specific landscape and visual issues and interrelated aspects such as ecology, historic and cultural heritage and developments impacts on other environmental factors are beyond the scope of this assessment and will need to be addressed on a site-specific basis through the planning process.



LAU 2: TREFIL QUARRY

Susceptibility to Wind and Solar development

Combined summary of landscape susceptibility

Criteria	Description	Score		
		Low	Med	High
Landscape susceptibility				
Scale	Valley floor with varied land use in contrast to wider landscape		Med	
Landform	Valley with undulating topography.			High
Landcover	Primarily quarried site, with residential settlement to south.	Low		
Built environment	Village of Trefil to south, interspersed with small fields. Includes historic quarry site to north listed as Scheduled Monument. (SM)			High
Visual susceptibility				
Skylines and settings	Undulating landform, no prominent skylines within the area		Med	
Movement	Infrequent activity – although quarry trucks very intrusive		Med	
Visibility, quality of views	An open landscape with extensive views available			High
Views in/out	Primarily detractive views in, attractive views out.		Med	
Typical receptors	Residential receptors in village, recreational receptors using route to BBNP and historic sites, workplace receptors in quarry.			High
Scenic quality and character	High scenic quality and landscape character with moderate integrity.			High

Criteria	Description	Score		
		Low	Med	High
Value				
Landscape value (designations)	Includes Trefil quarry SM to north and grassland SINCS associated with village.		Med	
Visual/sensory	LANDMAP overall evaluation			High
Historic value	LANDMAP overall evaluation			High
Habitats value	LANDMAP overall evaluation		Med	
Geological value	LANDMAP overall evaluation			High
Visual value (key views/vistas)	Limited intervisibility with BBNP. Setting of industrial archaeological features including SM.		Med	
Aesthetic, perceptual, experiential	A strong sense of place due to the association of the settlement and the quarry in an isolated location. However, dust, noise and disturbance from the quarry traffic leads to a perception of threat.		Med	

Landscape Sensitivity

Summary of Sensitivity - Wind	Assessed Sensitivity				
The assessment identifies that the landform and visual qualities of the area would be resilient to change. The already disturbed character and low numbers of visual receptors mean that new wind development could be accommodated within this landscape.	V Low	Low	Med	High	V High

Summary of Sensitivity - Solar	Assessed Sensitivity				
The landscape has medium sensitivity to solar development, meaning that it could accommodate this type of change without significant adverse effects if it is carefully sited.	V Low	Low	Med	High	V High

Guidance on Siting

The following advice should be considered for renewables development within this landscape unit:

Wind turbines

- Respect the setting and avoid direct disturbance of the section of the quarry designated as a scheduled monument.
- Avoid siting turbines where they will be visually intrusive from the settlement of Trefil.

Solar PV

- Respect the setting and avoid direct disturbance of the section of the quarry designated as a scheduled monument.
- Avoid siting solar farms where they will be visually intrusive from the settlement of Trefil.

Any development should be subject to a detailed environmental impact assessment including landscape, cultural heritage and biodiversity as a minimum.

Landscape capacity

Total area of LAU: 80.5 Ha.

Wind turbines

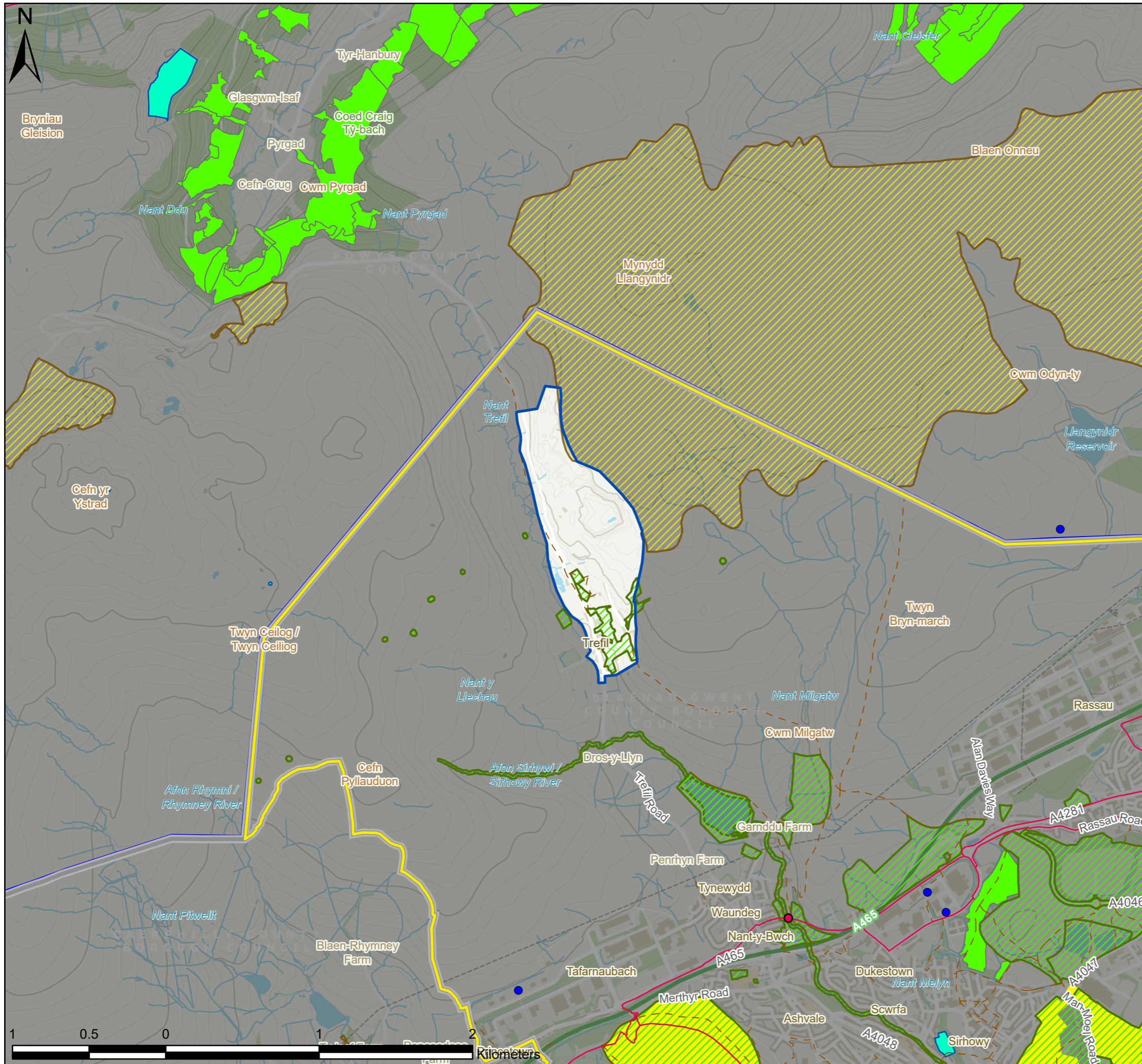
There is currently no wind turbine development in this landscape unit. The unit is comparatively small and existing constraints around the scheduled monument site and the sensitivity of residential receptors in the village limit the area available for development significantly while the quarry is still in operation.

The area is considered to be of medium sensitivity to this type of development, but it is likely that only small scale development would be possible.

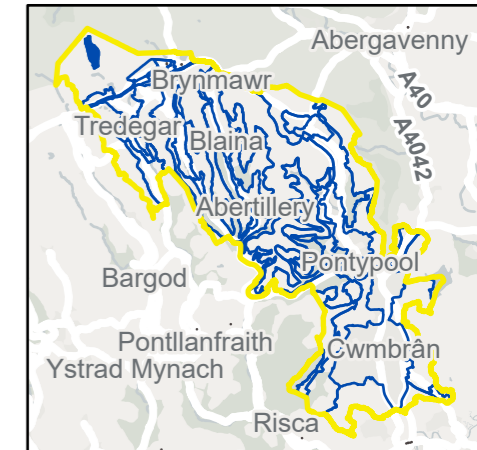
Solar PV

There is currently no solar farm development within this landscape unit. The landscape sensitivity is medium. Given the constraints outlined above it is likely that only small-scale development would be possible, and operational issues with dust generated by the quarry may be a further limitation to successful development during its operation.

For Local Landscape Constraints see Figure 7.2.1



- Existing Wind Turbines
- Listed Buildings
- ▭ Landscape Area Unit
- ▭ Study Area
- ▭ Local Authorities
- ▭ Brecon Beacons National Park
- National Cycle Network
- - - BGCBC and TCBC Public Rights of Way
- ▨ Sites of Special Scientific Interest
- ▨ Special Areas of Conservation
- ▨ BGCBC and TCBC Sites of Importance for Nature Conservation
- ▨ Scheduled Monuments
- ▨ Local Nature Reserves
- ▨ Ancient Woodland



P3	FI	28/10/2021	Client feedback	TW	ZS	LC
P2	FI	06/07/2021	Client feedback	TW	ZS	LC
P1	S3	10/06/2021	First issue	TW	ZS	LC
V.	S.	Date	Description	B.	C.	A.

• Environmental Consultants
 • Planners
 • Landscape Architects
 • Landscape Managers
 • Urban Designers
 • Ecologists



10 Park Grove, Cardiff, CF10 3BN • 02920 228966 • admin@tacp.co.uk

Blaenau Gwent and Torfaen County Borough Councils
Sensitivity and Capacity Study for Renewable Energy Development

Figure 7.2.1
 LAU 2 Landscape Constraints (Sheet 1 of 1)

Drawing no.: 61007_DWG_F7-2-1LAU2

LAU 4: TREFIL AND CARNO

Susceptibility to Wind and Solar development

Combined summary of landscape susceptibility

Criteria	Description	Score		
		Low	Med	High
Landscape susceptibility				
Scale	Large scale open landscape – exposed upland.	Low		
Landform	Undulating landscape with multiple small river valleys. Includes artificial landform relating to A465			High
Landcover	Development focused on A465 corridor, beyond this largely pastoral open moorland, includes several reservoirs.		Med	
Built environment	Away from the A465 corridor the area is largely unpopulated. Also includes the SM Afon Sirhowy hut circle, Trefil tramway and 16 th Century Listed farmhouse, Milgatw, evidence of historic settlement.			High
Visual susceptibility				
Skylines and settings	An undulating landscape without distinctive skylines, although these are undeveloped.		Med	
Movement	Away from the A465 corridor human activity is occasional			High
Visibility, quality of views	An unenclosed landscape with extensive attractive views available, but to a low number of receptors.			High
Views in/out	Limited views in and out of the area.	Low		
Typical receptors	Limited numbers of residential receptors and recreational visitors on footpaths and open access land. Workers in quarries and industrial estates. Frequent views from A465	Low		
Scenic quality and character	High scenic quality with strong landscape character and integrity.			High

Criteria	Description	Score		
		Low	Med	High
Landscape value (designations)	Mynydd Llangynidr Geological SSSI to north east of Trefil, Trefil quarries SM and associated tramway. Borders BBNP to north and east (partially within County borough boundary). The area includes multiple SINCs, largely related to waterbodies.		Med	
Visual/sensory	LANDMAP overall evaluation			High
Historic value	LANDMAP overall evaluation			High
Habitats value	LANDMAP overall evaluation			High
Geological value	LANDMAP overall evaluation			High
Visual value (key views/vistas)	Open views north to Brecon Beacons to west of area.			High
Aesthetic, perceptual, experiential	Attractive, tranquil, exposed, remote, wild. Sheltered near forestry and in lower lying land to south of area.			High

Landscape Sensitivity

Summary of Sensitivity - Wind	Assessed Sensitivity				
	V Low	Low	Med	High	V High
A large landscape unit assessed as high sensitivity in relation to the open and unsettled landscape pattern, with multiple designated sites. It may be considered that land adjacent to existing industrial development/infrastructure is of lower sensitivity.					High

Summary of Sensitivity - Solar	Assessed Sensitivity				
	V Low	Low	Med	High	V High
A large landscape unit of high landscape integrity. The open landscape pattern and lack of screening vegetation, with the exception of Carno forest, would make it hard to integrate or absorb large areas of solar development away from existing industrial areas.					High

Guidance on Siting

The following advice should be considered when planning renewables development within this landscape unit:

Wind turbines

- Identify opportunities to site wind turbines in proximity to A465 road corridor and industrial development at Rassau and Tafarnaubach, to reduce disturbance of the tranquility and undeveloped nature of the remaining area.
- Consider potential intervisibility with the Brecon Beacons National Park, particularly settlements, summits and popular walking routes.
- Respect the setting of scheduled monuments and historic buildings.
- Avoid direct impacts on Mynydd Llangynidr SSSI.
- Site turbines away from Trefil village to avoid detrimental effects on residents.
- Assess potential effects on Mynydd Llangatwg SAC to northeast.

Solar PV

- Identify opportunities to site solar development in proximity to A465 road corridor and industrial development at Rassau and Tafarnaubach, to reduce disturbance of the tranquility and undeveloped nature of the remaining area.
- Consider siting where woodland at Carno would screen wider views.
- Respect the setting of scheduled monuments and historic buildings.
- Avoid siting within SINCS unless land management can be consistent with and support conservation objectives.

Any development should be subject to a detailed environmental impact assessment including landscape, cultural heritage and biodiversity as a minimum.

Landscape capacity

Total area of LAU: 1520 Ha.

Wind turbines

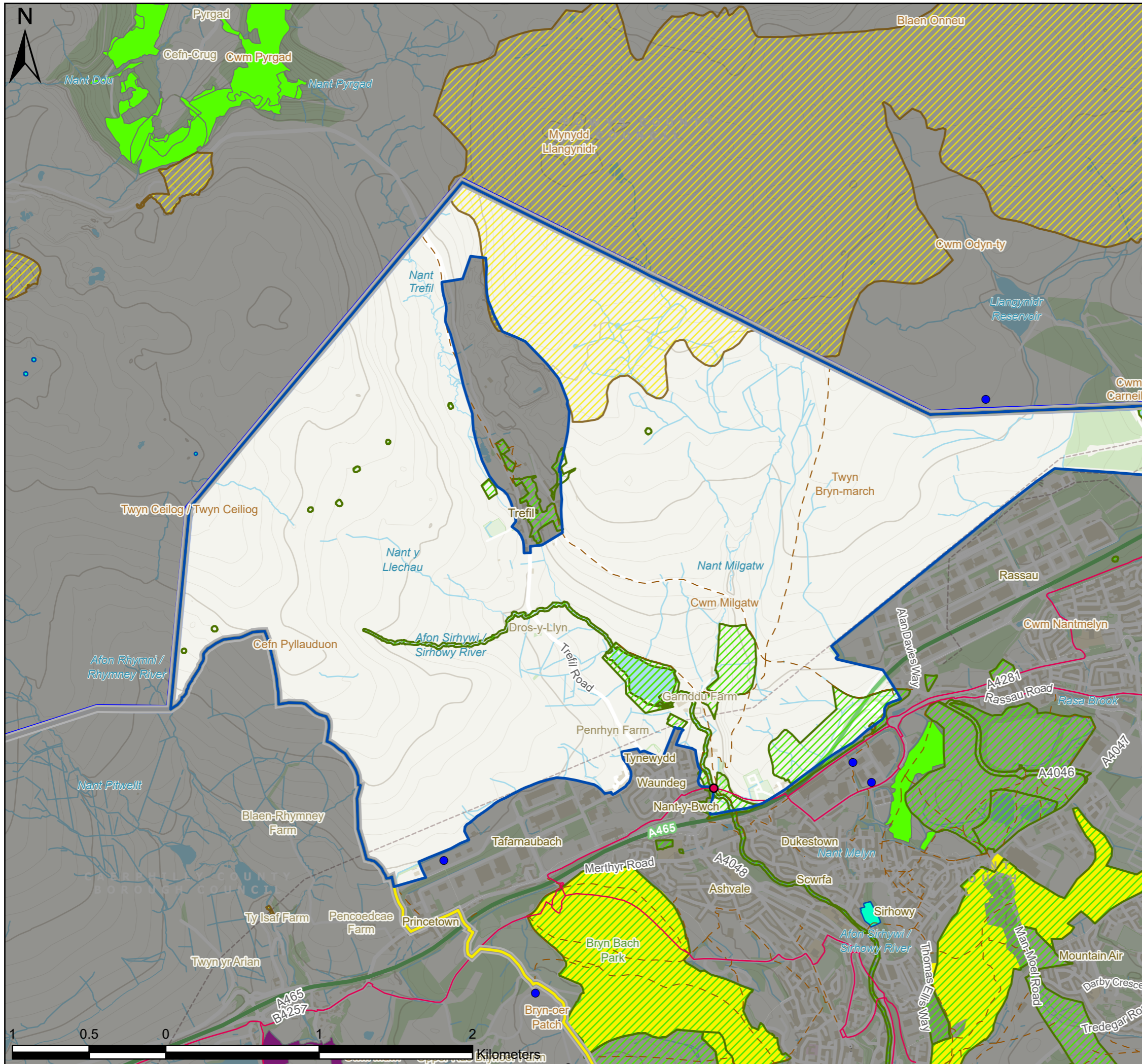
There is currently no wind farm development within this landscape unit. However, there are four turbine sites in close proximity to the boundaries at Tafarnaubach and Crown Business Park to the south and near Llangynidr reservoir to the north. Cumulative effects with this existing development should be considered. Where development is sited along the A465 corridor, the coalescence of multiple wind farm sites creating a continuous turbine corridor should be avoided.

The landscape sensitivity is very high, indicating that it would be unable to accommodate wind development without significant character change. It is therefore recommended that development should be limited to a low number of single or small groups of turbines, with very careful consideration given to siting them in accordance with the guidance above and avoiding cumulative effects.

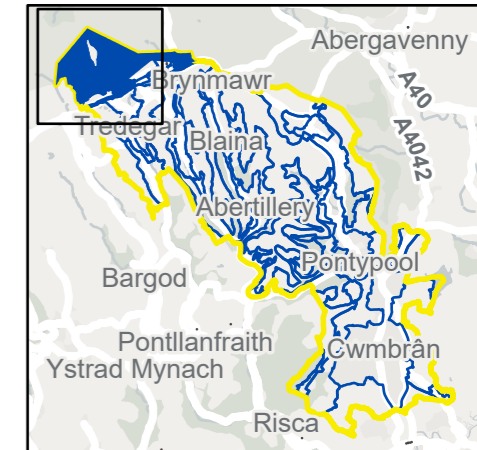
Solar PV

There is currently no solar farm development within this landscape unit. The landscape sensitivity is very high, with little opportunity to provide screening with locally appropriate boundaries or planting. Due to the south facing topography, intervisibility with the BBNP is less likely were solar panels to be sited further north, away from settlements and well used areas. Again, due to the sensitivity of the landscape, development should be limited to a very low number of small (<10Ha) development.

For Local Landscape Constraints see Figure 7.4.1 and 7.4.2



- Existing Wind Turbines
- Listed Buildings
- ▭ Landscape Area Unit
- ▭ Study Area
- ▭ Local Authorities
- ▭ Brecon Beacons National Park
- National Cycle Network
- - - BGCBC and TCBC Public Rights of Way
- ▨ Sites of Special Scientific Interest
- ▨ BGCBC and TCBC Sites of Importance for Nature Conservation
- ▨ Conservation Areas
- ▨ Scheduled Monuments
- ▨ Local Nature Reserves
- ▨ Ancient Woodland



P3	FI	28/10/2021	Client feedback	TW	ZS	LC
P2	FI	06/07/2021	Client feedback	TW	ZS	LC
P1	S3	10/06/2021	First issue	TW	ZS	LC
V.	S.	Date	Description	B.	C.	A.

• Environmental Consultants
 • Planners
 • Landscape Architects
 • Landscape Managers
 • Urban Designers
 • Ecologists

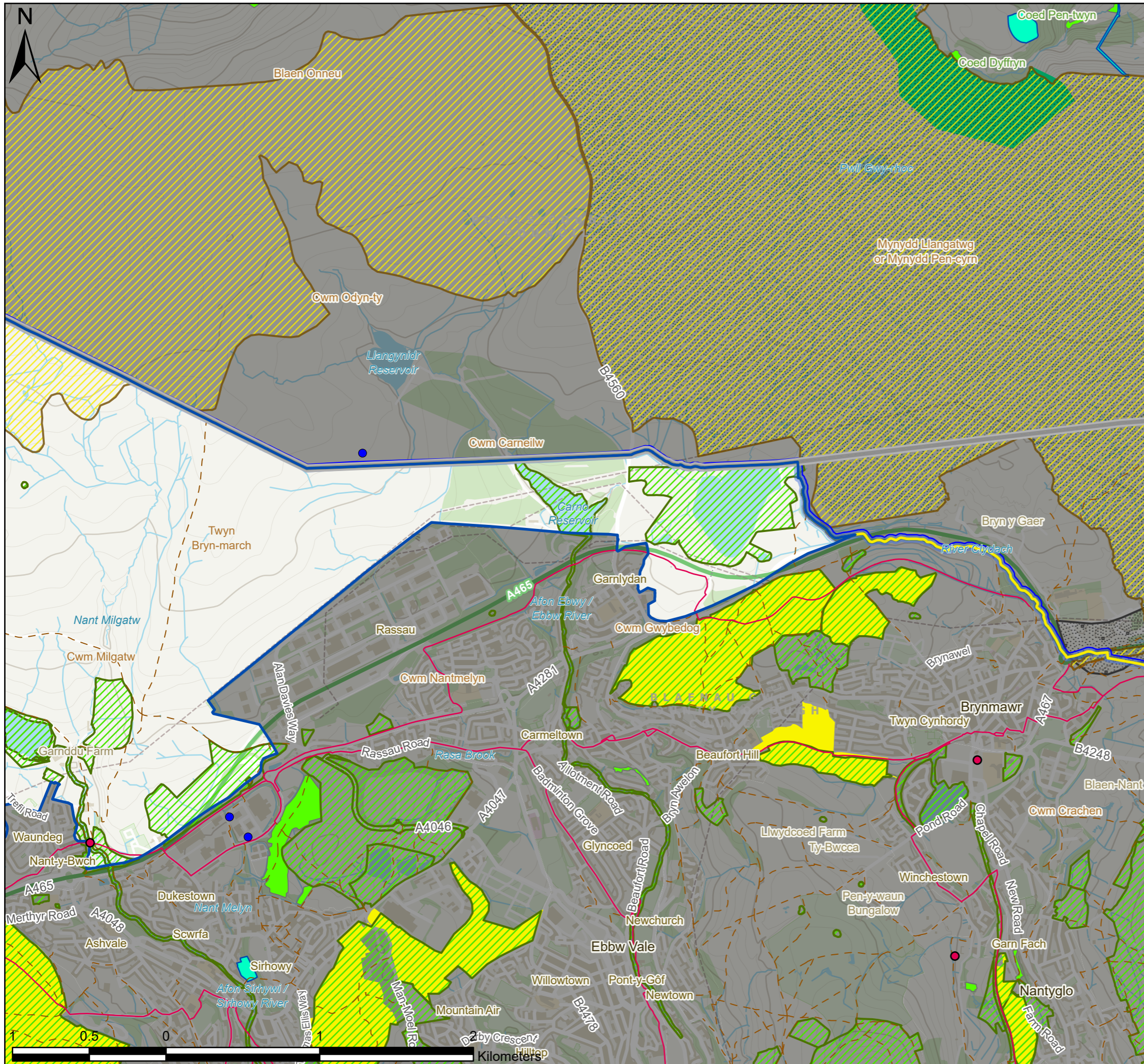


10 Park Grove, Cardiff, CF10 3BN • 02920 228966 • admin@tacp.co.uk

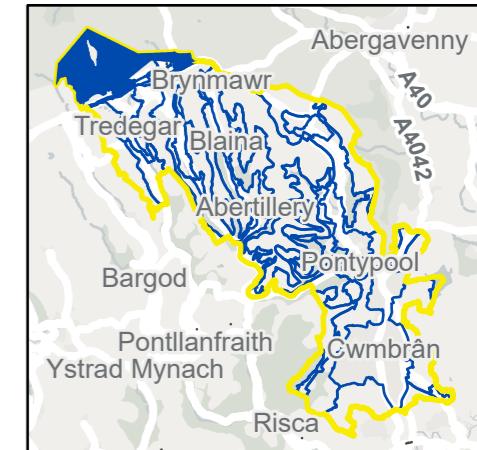
Blaenau Gwent and Torfaen County Borough Councils
Sensitivity and Capacity Study for Renewable Energy Development

Figure 7.4.1
 LAU 4 Landscape Constraints (Sheet 1 of 2)

Drawing no.: 61007_DWG_F7-4-1LAU4



- Existing Wind Turbines
- Listed Buildings
- ▭ Landscape Area Unit
- ▭ Study Area
- ▭ Local Authorities
- ▭ Brecon Beacons National Park
- National Cycle Network
- - - BGCBC and TCBC Public Rights of Way
- ▨ Sites of Special Scientific Interest
- ▨ Special Areas of Conservation
- ▨ BGCBC and TCBC Sites of Importance for Nature Conservation
- ▨ Historic Landscapes
- ▨ Scheduled Monuments
- ▨ Local Nature Reserves
- ▨ National Nature Reserves
- ▨ Ancient Woodland



P3	FI	28/10/2021	Client feedback	TW	ZS	LC
P2	FI	06/07/2021	Client feedback	TW	ZS	LC
P1	S3	10/06/2021	First issue	TW	ZS	LC
V.	S.	Date	Description	B.	C.	A.

- Environmental Consultants
- Planners
- Landscape Architects
- Landscape Managers
- Urban Designers
- Ecologists



10 Park Grove, Cardiff, CF10 3BN • 02920 228966 • admin@tacp.co.uk

Blaenau Gwent and Torfaen County Borough Councils
Sensitivity and Capacity Study for Renewable Energy Development

Figure 7.4.2
 LAU 4 Landscape Constraints (Sheet 2 of 2)

Drawing no.: 61007_DWG_F7-4-2LAU4

LAU 5: RHYMNEY HILL AND MYNYDD BEDWELLTE

Susceptibility to Wind and Solar development

Combined summary of landscape susceptibility

Criteria	Description	Score		
Landscape susceptibility		Low	Med	High
Scale	Large scale primarily upland character with simple form	Low		
Landform	Elevated undulating topography.			High
Landcover	Open upland moorland under grazing less susceptible. Recreational open land and Bryn Bach Park more susceptible.	Low		
Built environment	Very low numbers of scattered settlement. Includes SM at Cefn Golau. Crossed by B4256 and three minor roads.			High
Visual susceptibility				
Skylines and settings	Undeveloped skyline prominent from valleys either side and other ridges.			High
Movement	Low levels of human activity			High
Visibility, quality of views	A very exposed landscape with little formal enclosure and far reaching views out from some locations. Views into ridge limited by landform but are available from other ridges. Bryn Bach Park includes substantial woodland planting which creates enclosure and limits views around the lake.			High
Views in/out	Both attractive and detractive views, with extensive views out.		Med	
Typical receptors	Recreational users of Bryn Bach Park and to upland open access areas, PRoW. Residential and workplace receptors in Tredegar immediately to east of northern section.			High
Scenic quality and character	High scenic quality, landscape character and integrity.			High

Criteria	Description	Score		
Value		Low	Med	High
Landscape value (designations)	Local Nature Reserve in Bryn Bach Park, SINC covers majority of grazed upland areas. Cefn Golau Cholera cemetery Scheduled Monument on eastern flank of area and varied archaeological sites throughout.		Med	
Visual/sensory	LANDMAP overall evaluation			High
Historic value	LANDMAP overall evaluation			High
Habitats value	LANDMAP overall evaluation		Med	
Geological value	LANDMAP overall evaluation		Med	
Visual value (key views/vistas)	Intervisibility with BBNP north of B4256. Setting of Cefn Golau cemetery.			High
Aesthetic, perceptual, experiential	Uncluttered wild character of upland, contrasting with settled valleys. Bryn Bach Park as natural feeling public open space.			High

Landscape Sensitivity

Summary of Sensitivity - Wind	Assessed Sensitivity				
The assessment identifies that the landform and visual qualities of the area would be highly susceptible to change. There would be a very low threshold of development before causing significant adverse effects to both visual and landscape character.	V Low	Low	Med	High	V High

Summary of Sensitivity - Solar	Assessed Sensitivity				
Similarly, the very high sensitivity of this Landscape Unit indicates that it would be unlikely to accommodate solar development without negative effects. This is particularly due to the lack of strong field boundaries or other enclosure that might screen the development.	V Low	Low	Med	High	V High

Guidance on Siting

The following advice should be considered for renewables development within this landscape unit:

Wind turbines

- Avoid placing turbines on narrow sections of ridge where they will appear on the skyline.
- Respect the setting of the scheduled monument at Cefn Golau
- Consider siting turbines in the southern part of the area, at Mynydd Bedwellte where there are fewer sensitive receptors.

Solar PV

- Consider opportunities to use the undulating topography to screen solar development from wider views.
- Avoid placing solar on north facing slopes where these will be visible from the BBNP
- Respect the setting of the scheduled monument at Cefn Golau.
- Consider siting solar farms in the southern part of the area, at Mynydd Bedwellte where there are fewer sensitive receptors.

Any development should be subject to a detailed environmental impact assessment including landscape, cultural heritage and biodiversity as a minimum.

Landscape capacity

Total area of LAU: 694 Ha.

Wind turbines

There is currently a single turbine sited in the southern tip of this landscape unit. There are also three groups of turbines sited immediately to the west of the Mynydd Bedwellte ridge and two to the west of Park Bryn Bach within Caerphilly. Mynydd Bedwellte falls within the Pre-Assessed Areas for wind development. Cumulative effects with this existing and proposed development should be considered, especially given the very high sensitivity of the landscape.

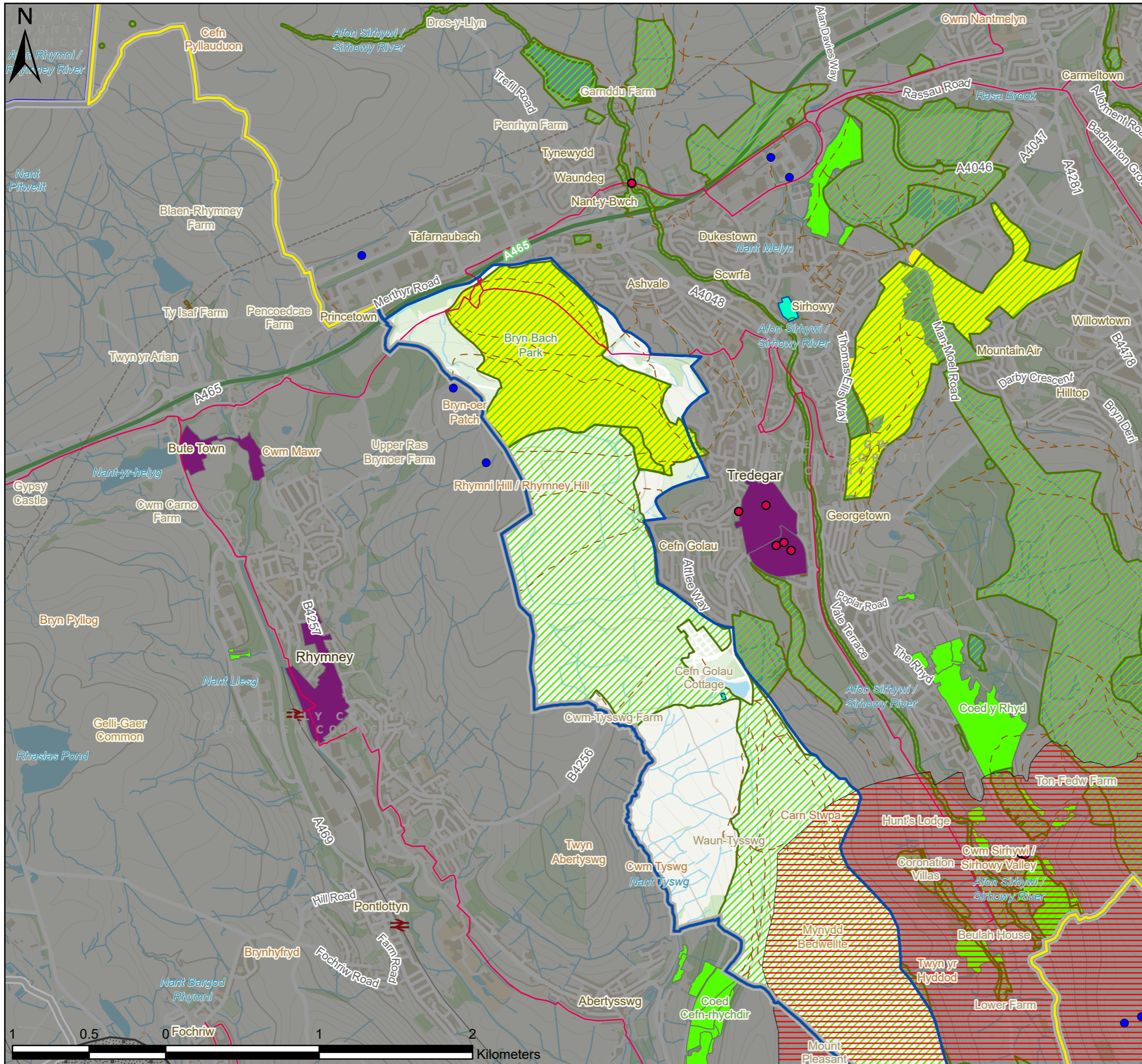
It is therefore recommended that no further development should be undertaken within this area, beyond that included within the PAA. This is to preserve, in part, the wild and undeveloped character of the area.

Solar PV

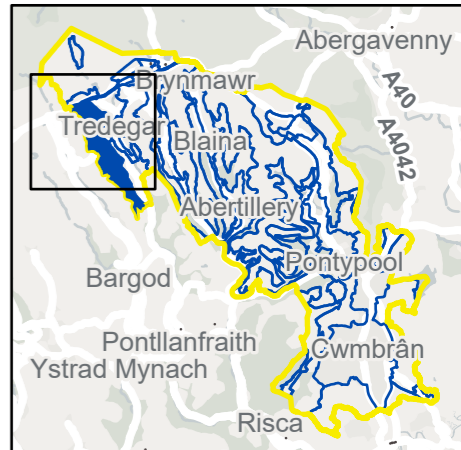
There is currently no solar farm development within this landscape unit. However, a very large scale Solar pv development has been granted permission at Wauntysswg Farm (30MW) and is due to start construction during 2022. The landscape sensitivity is very high. However, with careful layout to avoid visibility from residential and recreational receptors, there may be potential to site small (<10Ha) developments within the area. Meaning considerations may be required in terms of the scale of future development, extent and form of landscape mitigation and avoidance of development infill. This would be subject to the guidance set out above and following further environmental assessment.

Further development, however, should take into account the cumulative impacts including the proposed large scale solar development and may result in the conclusion that no further solar development is recommended for this area.

For Local Landscape Constraints see Figure 7.5.1 and 7.5.2



- Existing Wind Turbines
- Listed Buildings
- ▭ Landscape Area Unit
- ▭ Study Area
- ▭ Local Authorities
- ▭ Brecon Beacons National Park
- ▭ National Cycle Network
- ▭ BGCBC and TCBC Public Rights of Way
- ▭ Pre-Assessed Areas for Wind Energy
- ▭ Sites of Special Scientific Interest
- ▭ BGCBC and TCBC Sites of Importance for Nature Conservation
- ▭ Historic Landscapes
- ▭ Conservation Areas
- ▭ Scheduled Monuments
- ▭ Historic Parks and Gardens
- ▭ Local Nature Reserves
- ▭ Ancient Woodland



P3	FI	28/10/2021	Client feedback	TW	ZS	LC
P2	FI	06/07/2021	Client feedback	TW	ZS	LC
P1	S3	10/06/2021	First issue	TW	ZS	LC
V.	S.	Date	Description	B.	C.	A.

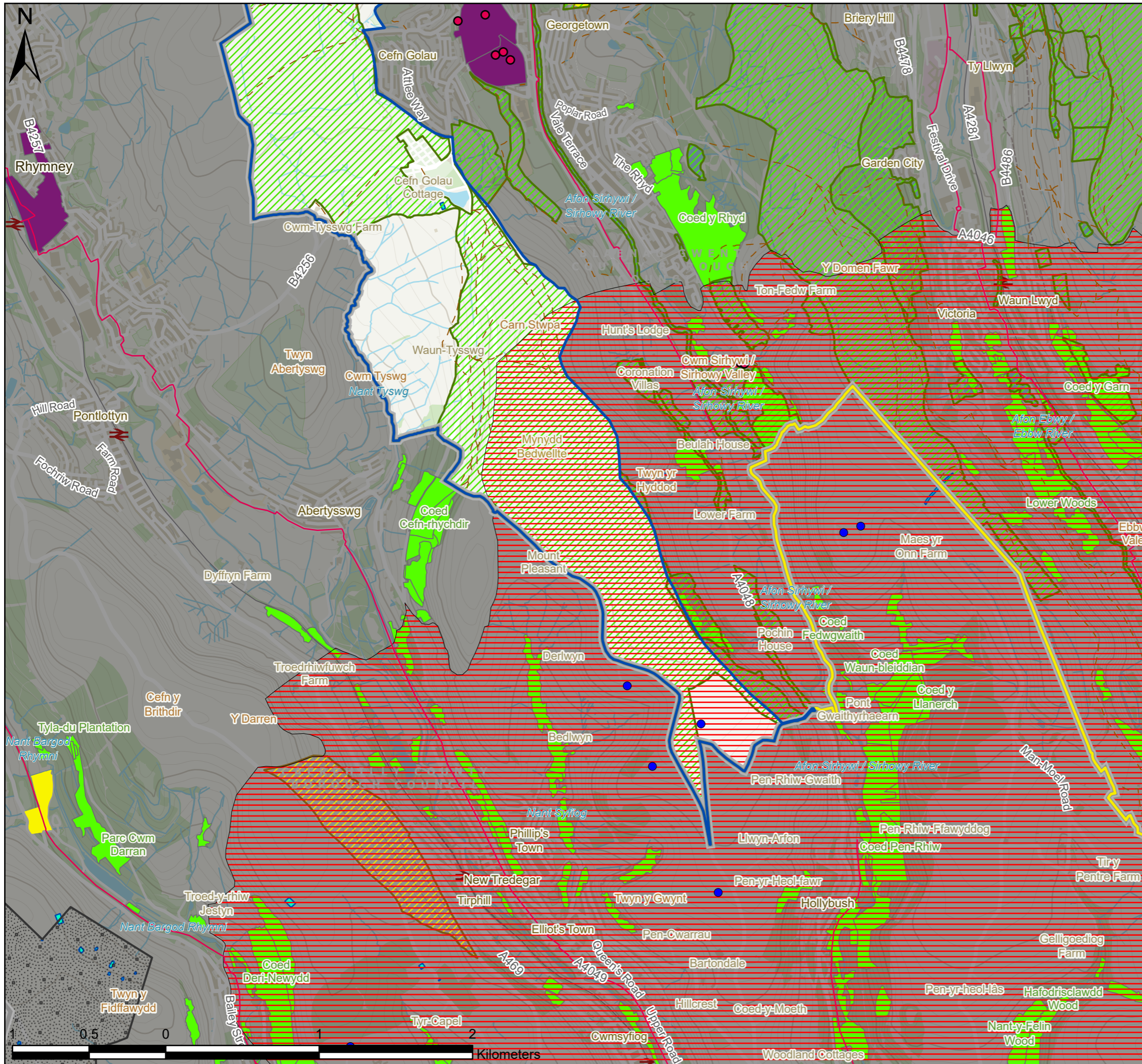
• Environmental Consultants
 • Planners
 • Landscape Architects
 • Landscape Managers
 • Urban Designers
 • Ecologists



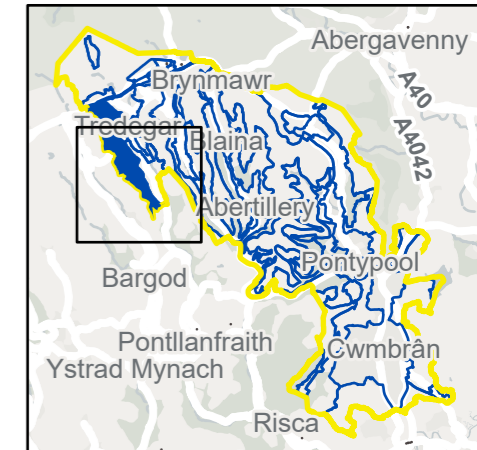
10 Park Grove, Cardiff, CF10 3BN • 02920 228966 • admin@tacp.co.uk

Blaenau Gwent and Torfaen County Borough Councils
Sensitivity and Capacity Study for Renewable Energy Development
 Figure 7.5.1
LAU 5 Landscape Constraints (Sheet 1 of 2)

Drawing no.: 61007_DWG_F7-5-1LAU5



- Existing Wind Turbines
- Listed Buildings
- ▭ Landscape Area Unit
- ▭ Study Area
- ▭ Local Authorities
- National Cycle Network
- - - BGCBC and TCBC Public Rights of Way
- ▨ Pre-Assessed Areas for Wind Energy
- ▨ Sites of Special Scientific Interest
- ▨ BGCBC and TCBC Sites of Importance for Nature Conservation
- ▨ Historic Landscapes
- ▨ Conservation Areas
- ▨ Scheduled Monuments
- ▨ Historic Parks and Gardens
- ▨ Local Nature Reserves
- ▨ Ancient Woodland



P3	FI	28/10/2021	Client feedback	TW	ZS	LC
P2	FI	06/07/2021	Client feedback	TW	ZS	LC
P1	S3	10/06/2021	First issue	TW	ZS	LC
V.	S.	Date	Description	B.	C.	A.

- Environmental Consultants
- Planners
- Landscape Architects
- Landscape Managers
- Urban Designers
- Ecologists



TACP

10 Park Grove, Cardiff, CF10 3BN • 02920 228966 • admin@tacp.co.uk

Blaenau Gwent and Torfaen County Borough Councils
Sensitivity and Capacity Study for Renewable Energy Development

Figure 7.5.2
 LAU 5 Landscape Constraints (Sheet 2 of 2)

Drawing no.: 61007_DWG_F7-5-2LAU5

LAU 7: TREDEGAR OPEN SPACE

Susceptibility to Wind and Solar development

Combined summary of landscape susceptibility

Criteria	Description	Score		
		Low	Med	High
Landscape susceptibility				
Scale	Large scale horizontal and geometric forms relating to industrial development and sports recreation.	Yellow		
Landform	Follows valley bottom with distinctive, steep sided topography			Red
Landcover	Organised, partially developed brownfield land. Sensitive in the wider historic context of Tredegar as a nucleated settlement.	Yellow		
Built environment	Includes A4048 road corridor and industrial development, but new residential development to the south and adjacent area to east includes dense residential settlement. Historic buildings and landscape of Bedwellty Park.		Orange	
Visual susceptibility				
Skylines and settings	Existing vertical development in the form of large-scale industrial sheds. No prominent skylines within this area.	Yellow		
Movement	Constant movement associated with road corridor and dense population.	Yellow		
Visibility, quality of views	An open landscape with some attractive views available, but also detractive elements.		Orange	
Views in/out	Views available both in and out of the area.		Orange	
Typical receptors	Residential receptors to the north and east, receptors in workplaces, recreation and road travellers throughout.			Red
Scenic quality and character	Of moderate scenic quality, but low integrity and overall character.	Yellow		

Criteria	Description	Score		
		Low	Med	High
Value				
Landscape value (designations)	Bedwellty Park includes ancient woodland, listed buildings and forms part of a Conservation Area.		Orange	
Visual/sensory	LANDMAP overall evaluation		Orange	
Historic value	LANDMAP overall evaluation			Red
Habitats value	LANDMAP overall evaluation	Yellow		
Geological value	LANDMAP overall evaluation		Orange	
Visual value (key views/vistas)	Continuous open space linked to valley bottom/river corridor, in contrast to built up areas. Backdrop of undeveloped valley sides.		Orange	
Aesthetic, perceptual, experiential	Noisy, includes both attractive and unattractive features and areas.		Orange	

Landscape Sensitivity

Summary of Sensitivity - Wind	Assessed Sensitivity				
A disturbed semi urban landscape of previously developed land, with mixed but un-coordinated new infrastructure, light industrial and amenity uses contributing to low landscape integrity. This landscape can accommodate new wind development, appropriately sited, should operational considerations allow.	V	Low	Med	High	V
	Low				High

Summary of Sensitivity - Solar	Assessed Sensitivity				
A disturbed semi urban landscape of previously developed land, with mixed but un-coordinated new infrastructure, light industrial and amenity uses contributing to low landscape integrity. This landscape can accommodate new solar development, particularly if new boundary features and management contribute to the enhancement of currently degraded landscape character, biodiversity and amenity.	V	Low	Med	High	V
	Low				High

Guidance on Siting

The following advice should be considered when planning renewables development within this landscape unit:

Wind turbines

- Identify opportunities to site wind turbines in proximity to existing industrial development or infrastructure of a similar scale.
- Avoid siting turbines in proximity to residential areas.
- Respect the setting of Bedwellty Park by siting turbines where they would not interfere with key views to or from this landscape.

Solar PV

- Identify opportunities for solar development in areas not currently in public use, for example between industrial units.
- Respect the setting of Bedwellty Park by siting solar PV where they would not be visible from this landscape or from upper floors of Bedwellty House.
- Respect the setting of Tredegar Cefn Golau Cemetery and the associated SM cholera cemetery by considering views from this location.
- Consider opportunities to site solar PV where it will be screened by existing woodland belts, or where there is potential to plant new woodland or hedgerow boundaries.
- Avoid siting solar PV where there is existing public amenity in the form of sports pitches and recreation grounds.
- Avoid siting within SINCS unless land management can be consistent with and support conservation objectives.

Any development should be subject to a detailed environmental impact assessment including landscape, cultural heritage and biodiversity as a minimum.

Landscape capacity

Total area of LAU: 100 Ha.

Wind turbines

There is currently no wind farm development within this landscape unit. The landscape sensitivity is very low with the southernmost section falling within the PAA.

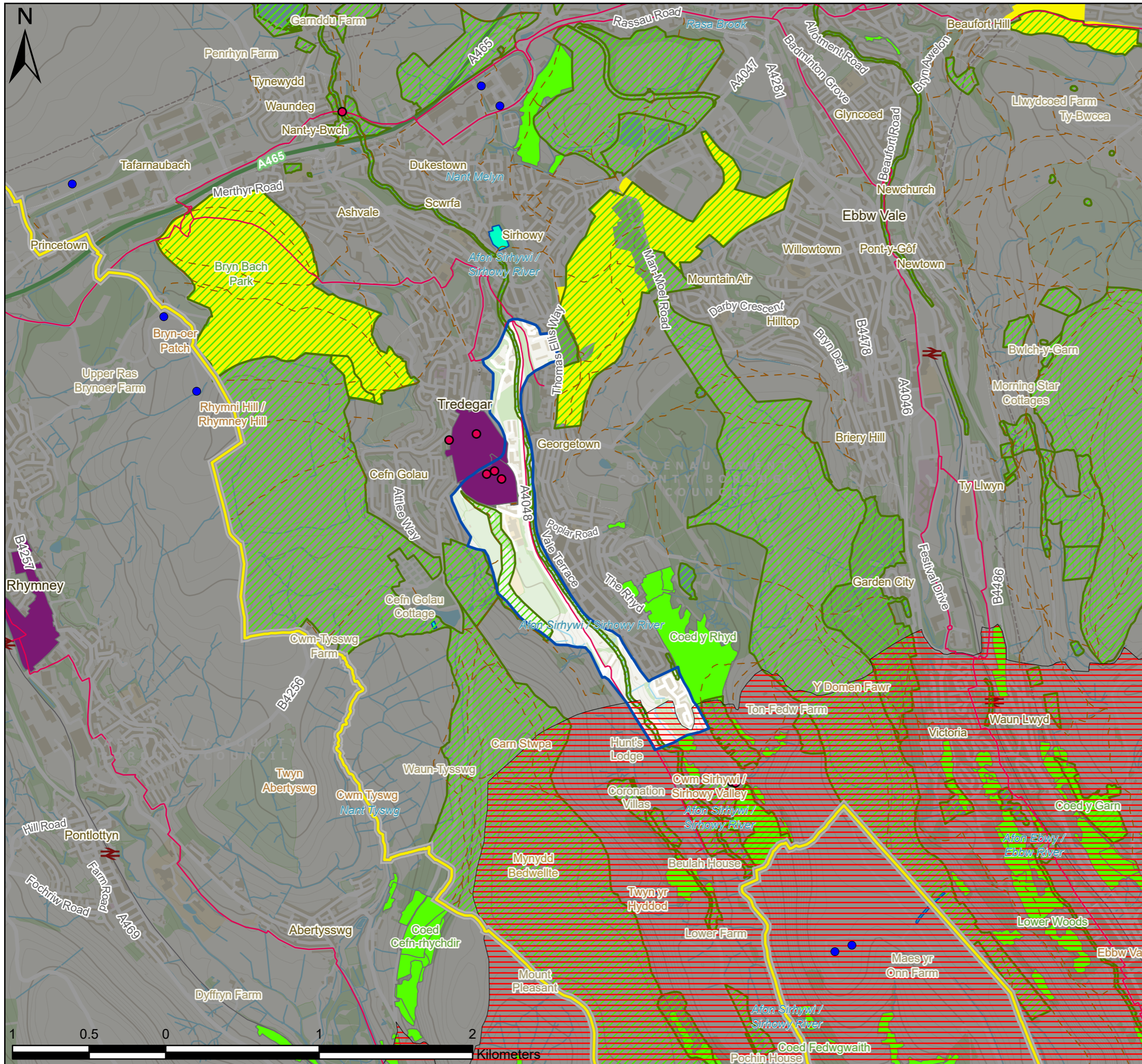
It is recommended that development should be limited to the southern extent of the LAU and to a low number of single or small groups of turbines given the extent of industrial and residential development already existing within the area. Consideration should be given to siting them in accordance with the guidance above.

Solar PV

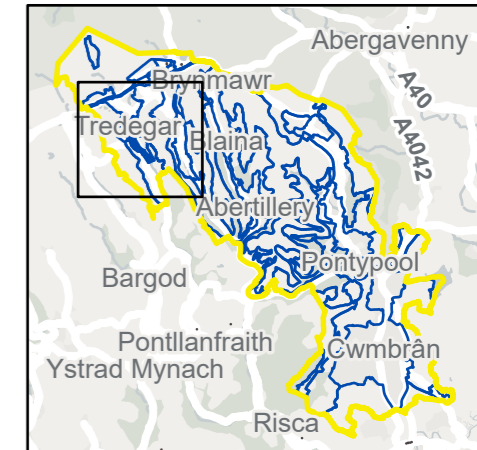
There is currently no solar farm development within this landscape unit.

The landscape sensitivity is very low, indicating that it would be able to accommodate solar development without significant character change. However, existing industrial and residential development, recreation grounds and road infrastructure occupy a large proportion of the available land, and other land uses may be a priority for future development of this area. There may be opportunities for roof mounted solar in association with existing or new development, but that is outside the scope of this report. Solar farm development will be limited to the space available, and therefore will be small in scale, but may include multiple small developments where the guidance on siting above is followed.

For Local Landscape Constraints see Figure 7.7.1



- Existing Wind Turbines
- Listed Buildings
- ▭ Landscape Area Unit
- ▭ Study Area
- ▭ Local Authorities
- National Cycle Network
- - - BGCBC and TCBC Public Rights of Way
- ▭ Pre-Assessed Areas for Wind Energy
- ▭ Sites of Special Scientific Interest
- ▭ BGCBC and TCBC Sites of Importance for Nature Conservation
- ▭ Conservation Areas
- ▭ Scheduled Monuments
- ▭ Historic Parks and Gardens
- ▭ Local Nature Reserves
- ▭ Ancient Woodland



P3	FI	28/10/2021	Client feedback	TW	ZS	LC
P2	FI	06/07/2021	Client feedback	TW	ZS	LC
P1	S3	10/06/2021	First issue	TW	ZS	LC
V.	S.	Date	Description	B.	C.	A.

- Environmental Consultants
- Planners
- Landscape Architects
- Landscape Managers
- Urban Designers
- Ecologists



TACP

10 Park Grove, Cardiff, CF10 3BN • 02920 228966 • admin@tacp.co.uk

Blaenau Gwent and Torfaen County Borough Councils
Sensitivity and Capacity Study for Renewable Energy Development

Figure 7.7.1
 LAU 7 Landscape Constraints (Sheet 1 of 1)

Drawing no.: 61007_DWG_F7-7-1LAU7

LAU 10: RASSAU A465 CORRIDOR

Susceptibility to Wind and Solar development

Combined summary of landscape susceptibility

Criteria	Description	Score		
		Low	Med	High
Landscape susceptibility				
Scale	Small scale landscape of varied development and informal open space.			High
Landform	Heads of the valleys.			High
Landcover	Varied reclaimed and natural grassland and woodland, settlement edge.	Low		
Built environment	Dominated by A465 road corridor, large scale infrastructure and industrial development. Interspersed with informal green space, small areas of residential properties.	Low		
Visual susceptibility				
Skylines and settings	Existing vertical features, road bridges, embankments and retaining walls	Low		
Movement	Frequent traffic and other activity	Low		
Visibility, quality of views	Close views are restricted by built development and vegetation, but some long-distance views are available both in and out.		Med	
Views in/out	Primarily detractive views in, attractive views out.		Med	
Typical receptors	Road users, workplace receptors, recreational users of open space and wider landscape, occasional residential receptors.			High
Scenic quality and character	Low scenic quality with moderate landscape character and integrity.		Med	

Criteria	Description	Score		
		Low	Med	High
Landscape value (designations)	SINCs cover some areas of grassland, including Hirgan field in middle of area, and the Ebbw River.		Med	
Visual/sensory	LANDMAP overall evaluation		Med	
Historic value	LANDMAP overall evaluation			High
Habitats value	LANDMAP overall evaluation	Low		
Geological value	LANDMAP overall evaluation		Med	
Visual value (key views/vistas)	Intermittent intervisibility with BBNP. Views from adjacent parks and open spaces including Bryn Bach and Beaufort Hill, both Local Nature Reserves.		Med	
Aesthetic, perceptual, experiential	A moderate sense of place but associated perceived noise, threat and smell and unattractive setting of road corridor.	Low		

Landscape Sensitivity

Summary of Sensitivity - Wind	Assessed Sensitivity				
The assessment identifies that the landform and visual qualities of the area would be resilient to change. The already disturbed and industrial character mean that new wind development could be accommodated within this landscape.	V Low	Low	Med	High	V High

Summary of Sensitivity - Solar	Assessed Sensitivity				
The landscape has very low sensitivity to solar development, meaning that it could accommodate this type of change without significant adverse effects.	V Low	Low	Med	High	V High

Guidance on Siting

The following advice should be considered for renewables development within this landscape unit:

Wind Turbines

- Identify opportunities to site wind turbines in proximity to A465 road corridor and industrial development at Rassau and Tafarnaubach.
- Consider potential intervisibility with the BBNP, particularly summits and popular walking routes.
- Site turbines away from settlement edges to avoid detrimental effects on residents.
- Assess potential effects on Mynydd Llangatwg SAC to northeast.

Solar PV

- Identify opportunities to site solar development in proximity to A465 road corridor and industrial development at Rassau and Tafarnaubach.
- Consider siting where areas of scrub and woodland would screen wider views.
- Avoid siting within SINCS unless land management can be consistent with and support conservation objectives.

Any development should be subject to a detailed environmental impact assessment including landscape, cultural heritage and biodiversity as a minimum.

Landscape capacity

Total area of LAU: 143 Ha.

Wind turbines

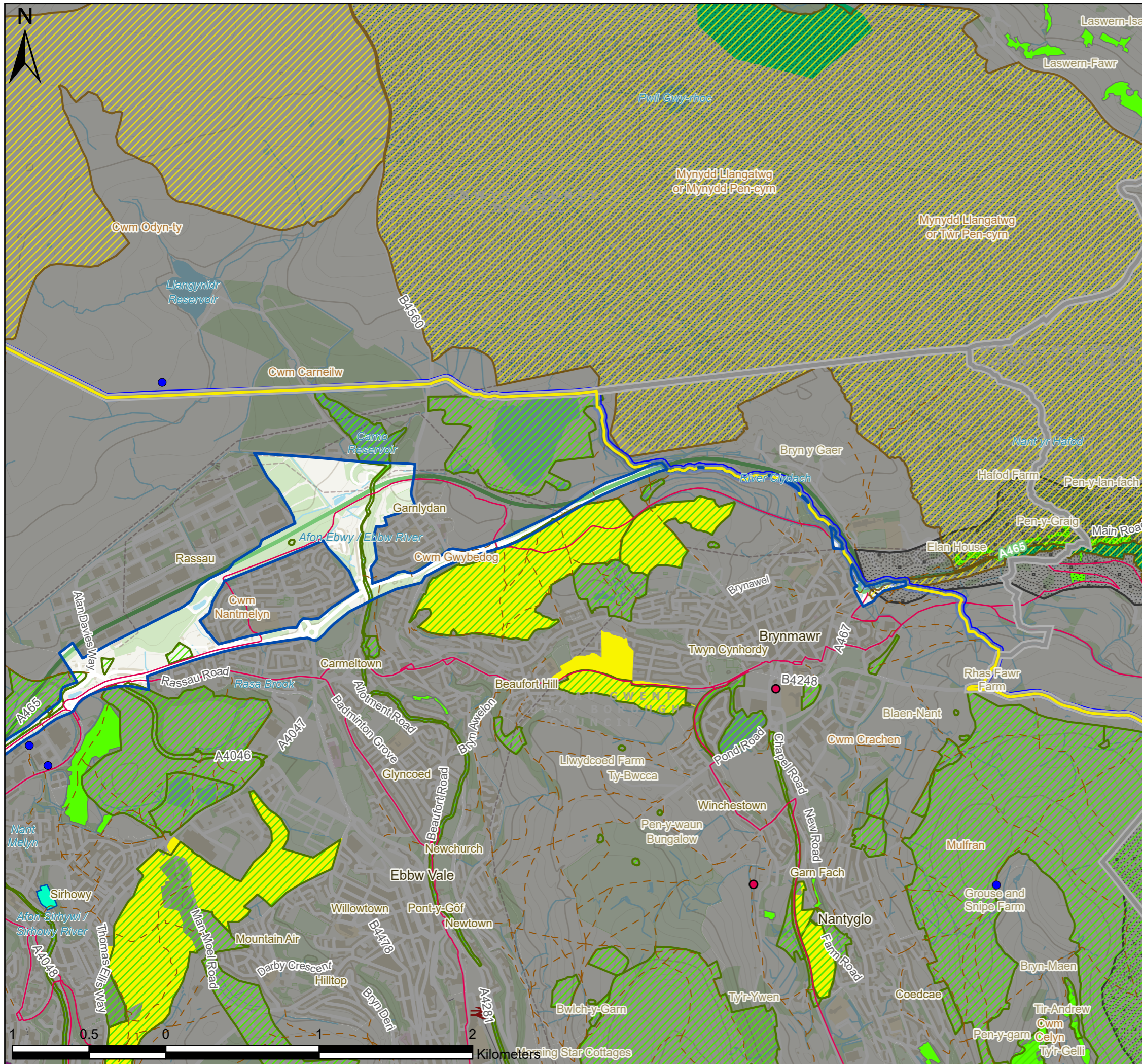
There is currently no wind farm development within this landscape unit. However, there are turbine sites adjacent at Tafarnaubach to the north and Crown Business Park to the south. Cumulative effects with this existing development should be considered. Should development be sited along the A465 corridor, the coalescence of multiple wind farm sites creating a continuous turbine corridor should be avoided.

The unit is largely defined by the road corridor through the centre of it. The areas available for development are limited by this but are of very low sensitivity. It is recommended that several small groups of turbines could be accommodated along this corridor, with careful consideration of avoiding cumulative effects as noted above.

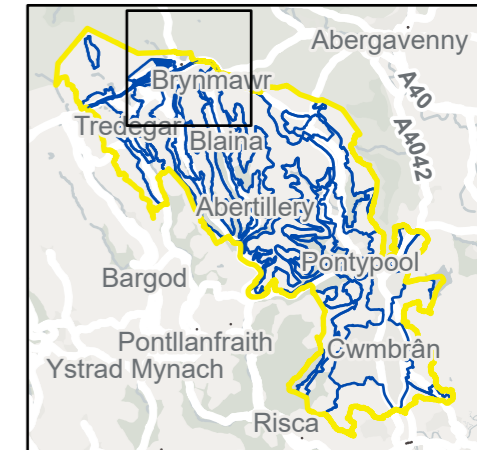
Solar PV

There is currently no solar farm development within this landscape unit. The landscape sensitivity is very low. Given the limited contiguous land available it is likely that only small-scale development would be possible, but this could occur in at least two locations, if not on the road embankments themselves.

For Local Landscape Constraints see Figure 7.10.1 and 7.10.2



- Existing Wind Turbines
- Listed Buildings
- ▭ Landscape Area Unit
- ▭ Study Area
- ▭ Local Authorities
- ▭ Brecon Beacons National Park
- National Cycle Network
- - - BGCBC and TCBC Public Rights of Way
- ▨ Sites of Special Scientific Interest
- ▨ Special Areas of Conservation
- ▨ BGCBC and TCBC Sites of Importance for Nature Conservation
- ▨ Historic Landscapes
- ▨ Conservation Areas
- ▨ Scheduled Monuments
- ▨ Local Nature Reserves
- ▨ National Nature Reserves
- ▨ Ancient Woodland



P3	FI	28/10/2021	Client feedback	TW	ZS	LC
P2	FI	06/07/2021	Client feedback	TW	ZS	LC
P1	S3	10/06/2021	First issue	TW	ZS	LC
V.	S.	Date	Description	B.	C.	A.

- Environmental Consultants
- Planners
- Landscape Architects
- Landscape Managers
- Urban Designers
- Ecologists



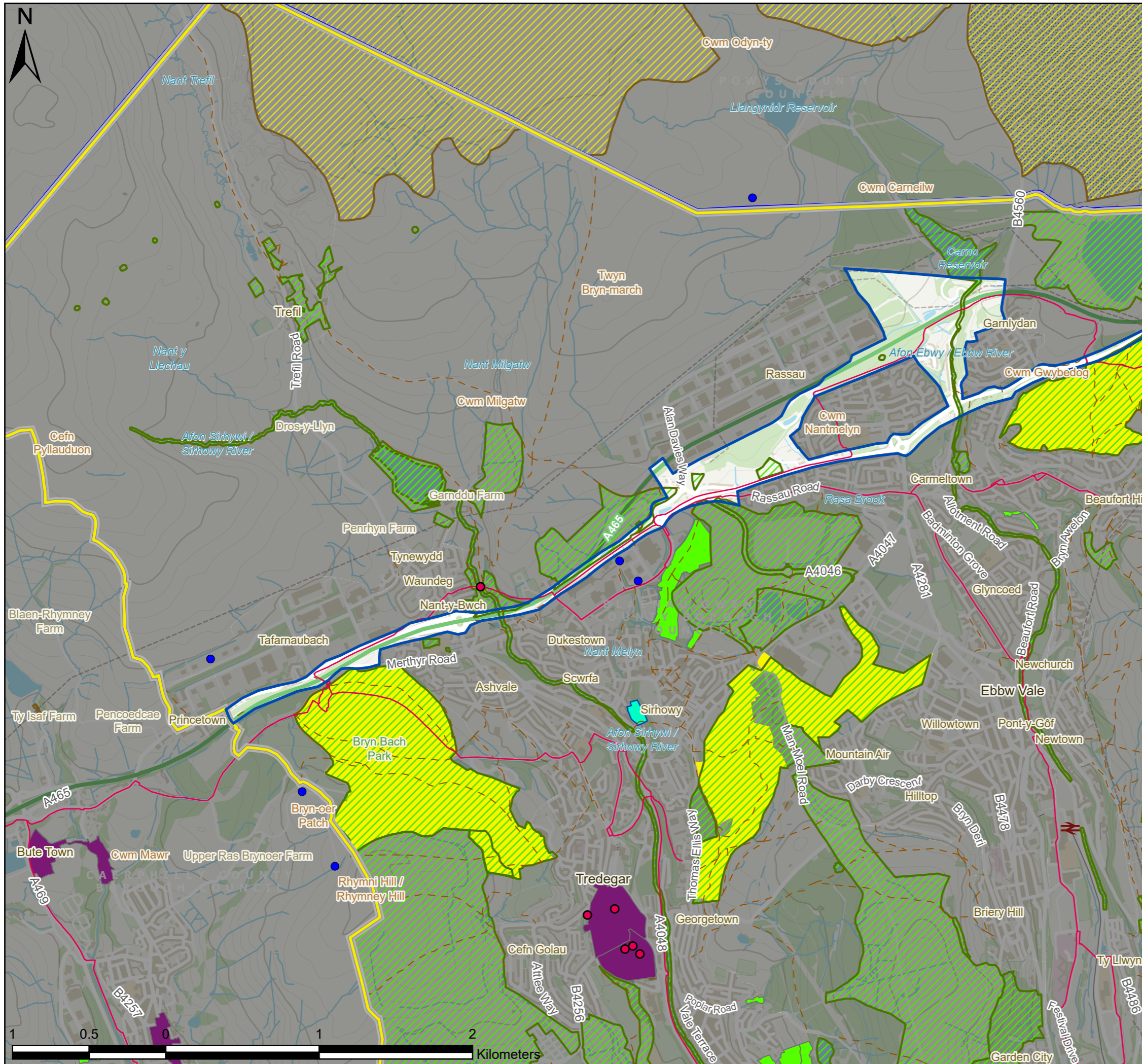
TACP

10 Park Grove, Cardiff, CF10 3BN • 02920 228966 • admin@tacp.co.uk

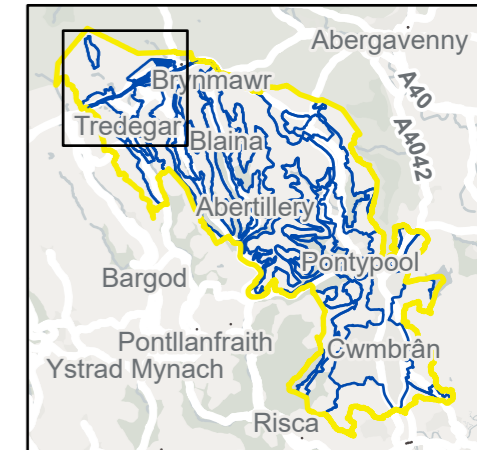
Blaenau Gwent and Torfaen County Borough Councils
Sensitivity and Capacity Study for Renewable Energy Development

Figure 7.10.1
 LAU 10 Landscape Constraints (Sheet 1 of 2)

Drawing no.: 61007_DWG_F7-10-1LAU10



- Existing Wind Turbines
- Listed Buildings
- ▭ Landscape Area Unit
- ▭ Study Area
- ▭ Local Authorities
- ▭ Brecon Beacons National Park
- National Cycle Network
- - - BGCBC and TCBC Public Rights of Way
- ▨ Sites of Special Scientific Interest
- ▨ Special Areas of Conservation
- ▨ BGCBC and TCBC Sites of Importance for Nature Conservation
- ▨ Conservation Areas
- ▨ Scheduled Monuments
- ▨ Historic Parks and Gardens
- ▨ Local Nature Reserves
- ▨ Ancient Woodland



P3	FI	28/10/2021	Client feedback	TW	ZS	LC
P2	FI	06/07/2021	Client feedback	TW	ZS	LC
P1	S3	10/06/2021	First issue	TW	ZS	LC
V.	S.	Date	Description	B.	C.	A.

- Environmental Consultants
- Planners
- Landscape Architects
- Landscape Managers
- Urban Designers
- Ecologists



TACP

10 Park Grove, Cardiff, CF10 3BN • 02920 228966 • admin@tacp.co.uk

Blaenau Gwent and Torfaen County Borough Councils
Sensitivity and Capacity Study for Renewable Energy Development
 Figure 7.10.2
 LAU 10 Landscape Constraints (Sheet 2 of 2)

Drawing no.: 61007_DWG_F7-10-2LAU10

LAU 11: SIRHOWY VALLEY

Susceptibility to Wind and Solar development

Combined summary of landscape susceptibility

Criteria	Description	Score		
		Low	Med	High
Landscape susceptibility				
Scale	Large scale valley sides and pasture.	Low		
Landform	Valley			High
Landcover	Mosaic of hedged and open fields and woodland, with regenerating scrub on reclaimed land.			High
Built environment	A4048 Newport Rd follows valley floor, scattered, small rural settlements and farms		Med	
Visual susceptibility				
Skylines and settings	Undulating valley landscape, ridge forms western boundary of area.		Med	
Movement	Infrequent traffic and other activity		Med	
Visibility, quality of views	Relatively open but much of the landscape is inaccessible and landform and vegetation restricts views in.		Med	
Views in/out	Attractive and detractive views are available both in and out of the area.		Med	
Typical receptors	Mostly road users, occasional residential receptors.	Low		
Scenic quality and character	High scenic quality and landscape character with moderate integrity.			High

Criteria	Description	Score		
		Low	Med	High
Value				
Landscape value (designations)	SM for an incline winding haulage engine on the valley side above Bedwelty Pits. Multiple ancient woodland sites, SINCs covering both woodland and grassland areas as well as Sirhowy River. Listed buildings at The Fountain Inn.		Med	
Visual/sensory	LANDMAP overall evaluation			High
Historic value	LANDMAP overall evaluation			High
Habitats value	LANDMAP overall evaluation		Med	
Geological value	LANDMAP overall evaluation		Med	
Visual value (key views/vistas)	Limited views available.	Low		
Aesthetic, perceptual, experiential	A strong sense of place but also perceived as threatening although sheltered.		Med	

Landscape Sensitivity

Summary of Sensitivity - Wind	Assessed Sensitivity				
The assessment identifies that the landform and visual qualities of the area may have some potential to accommodate wind development.	V Low	Low	Med	High	V High

Summary of Sensitivity - Solar	Assessed Sensitivity				
The landscape has medium sensitivity to solar development, meaning that it has some potential to accommodate this type of change.	V Low	Low	Med	High	V High

Guidance on Siting

The following advice should be considered for renewables development within this landscape unit:

Wind Turbines

- Site turbines away from settlement edges to avoid detrimental effects on residents.
- Consider the setting of Scheduled Monuments and listed property.

Solar PV

- Consider opportunities to site solar development within existing field boundaries, or where these can be enhanced as part of the development.
- Consider siting where areas of scrub and woodland would screen wider views.
- Avoid siting within SINCS unless land management can be consistent with and support conservation objectives.

Any development should be subject to a detailed environmental impact assessment including landscape, cultural heritage and biodiversity as a minimum.

Landscape capacity

Total area of LAU: 346 Ha.

Wind turbines

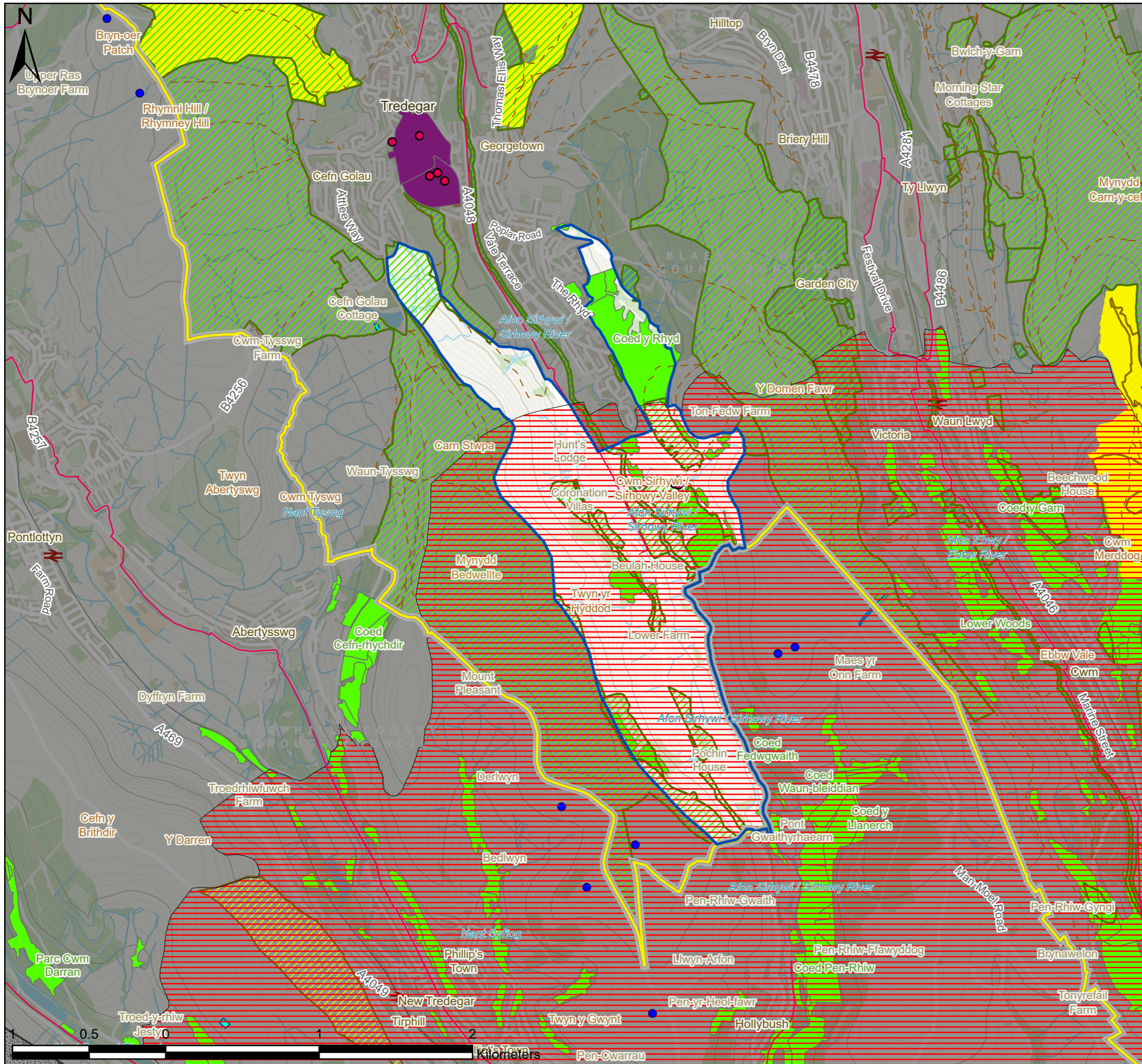
There is currently no wind farm development within this landscape unit. However, there are turbine sites on the tops of Mynydd Bedwellte to the west and north of Manmoel to the east. Cumulative effects with this existing development should be considered. The majority of the area falls within the Pre-Assessed Area for wind.

The area is of high sensitivity to wind turbine development. However, operational constraints may preclude development of this type within the valley. Single turbines or small-scale development would be acceptable with careful consideration of cumulative effects, especially with the PAA.

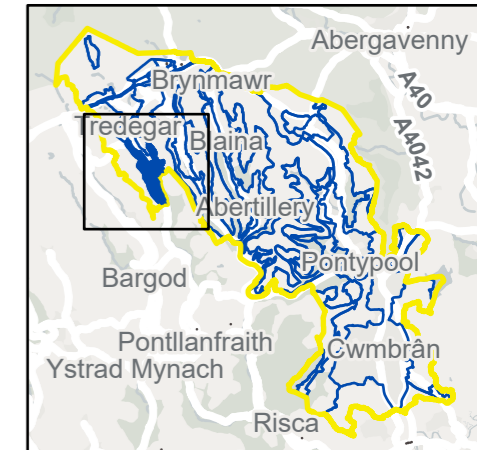
Solar PV

There is currently no solar farm development within this landscape unit. The landscape sensitivity is medium. Medium scale solar development would be acceptable if it can be arranged to sit within the existing field pattern and suitable screening could be created or enhanced.

For Local Landscape Constraints see Figure 7.11.1



- Existing Wind Turbines
- Listed Buildings
- ▭ Landscape Area Unit
- ▭ Study Area
- ▭ Local Authorities
- National Cycle Network
- - - BGCBC and TCBC Public Rights of Way
- ▭ Pre-Assessed Areas for Wind Energy
- ▭ Sites of Special Scientific Interest
- ▭ BGCBC and TCBC Sites of Importance for Nature Conservation
- ▭ Historic Landscapes
- ▭ Conservation Areas
- ▭ Scheduled Monuments
- ▭ Historic Parks and Gardens
- ▭ Local Nature Reserves
- ▭ Ancient Woodland



P3	FI	28/10/2021	Client feedback	TW	ZS	LC
P2	FI	06/07/2021	Client feedback	TW	ZS	LC
P1	S3	10/06/2021	First issue	TW	ZS	LC
V.	S.	Date	Description	B.	C.	A.

- Environmental Consultants
- Planners
- Landscape Architects
- Landscape Managers
- Urban Designers
- Ecologists



TACP

10 Park Grove, Cardiff, CF10 3BN • 02920 228966 • admin@tacp.co.uk

Blaenau Gwent and Torfaen County Borough Councils
Sensitivity and Capacity Study for Renewable Energy Development

Figure 7.11.1
 LAU 11 Landscape Constraints (Sheet 1 of 1)

Drawing no.: 61007_DWG_F7-11-1LAU11