

LAU 13: BRIERY HILL AND CEFN MANMOEL

Susceptibility to Wind and Solar development

Combined summary of landscape susceptibility

Criteria	Description	Score		
Landscape susceptibility		Low	Med	High
Scale	Large scale primarily upland character with simple form	Yellow		
Landform	Elevated rounded ridge, undulating topography.			Red
Landcover	Open upland moorland, reclaimed land and forestry		Orange	
Built environment	Scattered farmsteads, industrial estate in northern section		Orange	
Visual susceptibility				
Skylines and settings	Undeveloped ridgeline partially visible from valleys either side and other high points. Undulating land less prominent to the north.			Red
Movement	Frequent activity in north, occasional to south	Yellow		
Visibility, quality of views	Generally open landscape with forestry blocks and topography framing and controlling views in and out.		Orange	
Views in/out	Attractive views out, with detractive views both in and out.		Orange	
Typical receptors	Recreational receptors of open access land, including Sirhowy Valley Walk which follows ridge. Concentrated to north at Sirhowy Hill woodlands. Also, workplace receptors in industrial estate. Residential receptors in adjacent settlements Tredegar and Ebbw Vale.			Red
Scenic quality and character	Low scenic quality, landscape character and integrity.	Yellow		

Criteria	Description	Score		
Value		Low	Med	High
Landscape value (designations)	Local Nature Reserves, Sirhowy Valley Woods and Cardiff pond on northern slopes. Also, SINC in northern section north of A4047, within nature reserve and along eastern flank of Cefn Manmoel. Ancient woodland site forms northern boundary with Crown industrial estate. Y Domen Fawr prehistoric cairn near top of Cefn Manmoel and Cefn Man Moel cross ridge dyke, which extends into Caerphilly in the southern section, are scheduled as Ancient Monuments. Aneurin Bevan memorial as a focus point.		Orange	
Visual/sensory	LANDMAP overall evaluation	Yellow		
Historic value	LANDMAP overall evaluation			Red
Habitats value	LANDMAP overall evaluation			Red
Geological value	LANDMAP overall evaluation		Orange	
Visual value (key views/vistas)	Intermittent intervisibility with BBNP from northern slopes, largely screened by trees.		Orange	
Aesthetic, perceptual, experiential	Varied experience, either exposed or sheltered, tranquil and remote, but unattractive in more disturbed sections.	Yellow		

Landscape Sensitivity

Summary of Sensitivity - Wind	Assessed Sensitivity				
The assessment identifies that the landform and visual qualities of the area would be able to accommodate a certain amount of change. There is a strong contrast between the northern section, which is likely to be less sensitive than the less disturbed southern section.	V Low	Low	Med	High	V High

Summary of Sensitivity - Solar	Assessed Sensitivity				
Similarly, the medium sensitivity of this Landscape Unit indicate that it would be able to accommodate solar development, if carefully sited, without significant negative effects.	V Low	Low	Med	High	V High

Guidance on Siting

The following advice should be considered for renewables development within this landscape unit:

Wind turbines

- Avoid placing turbines on narrow sections of ridge where they will appear on the skyline.
- Respect the setting of Scheduled Monuments.
- Consider opportunities for siting turbines in the northern part of the area, within the setting of existing development and infrastructure.

Solar PV

- Consider opportunities for siting solar farms in the northern part of the area, within the setting of existing development and infrastructure.
- Avoid placing solar on north facing slopes where these will be visible from the National Park.
- Consider using existing woodland and forestry to screen solar development from wider views.
- Respect the setting of the Scheduled Monuments.
- Avoid siting within SINCS unless land management can be consistent with and support conservation objectives.
- Avoid siting solar farms adjacent to existing settlements.

Any development should be subject to a detailed environmental impact assessment including landscape, cultural heritage and biodiversity as a minimum.

Landscape capacity

Total area of LAU: 727 Ha.

Wind turbines

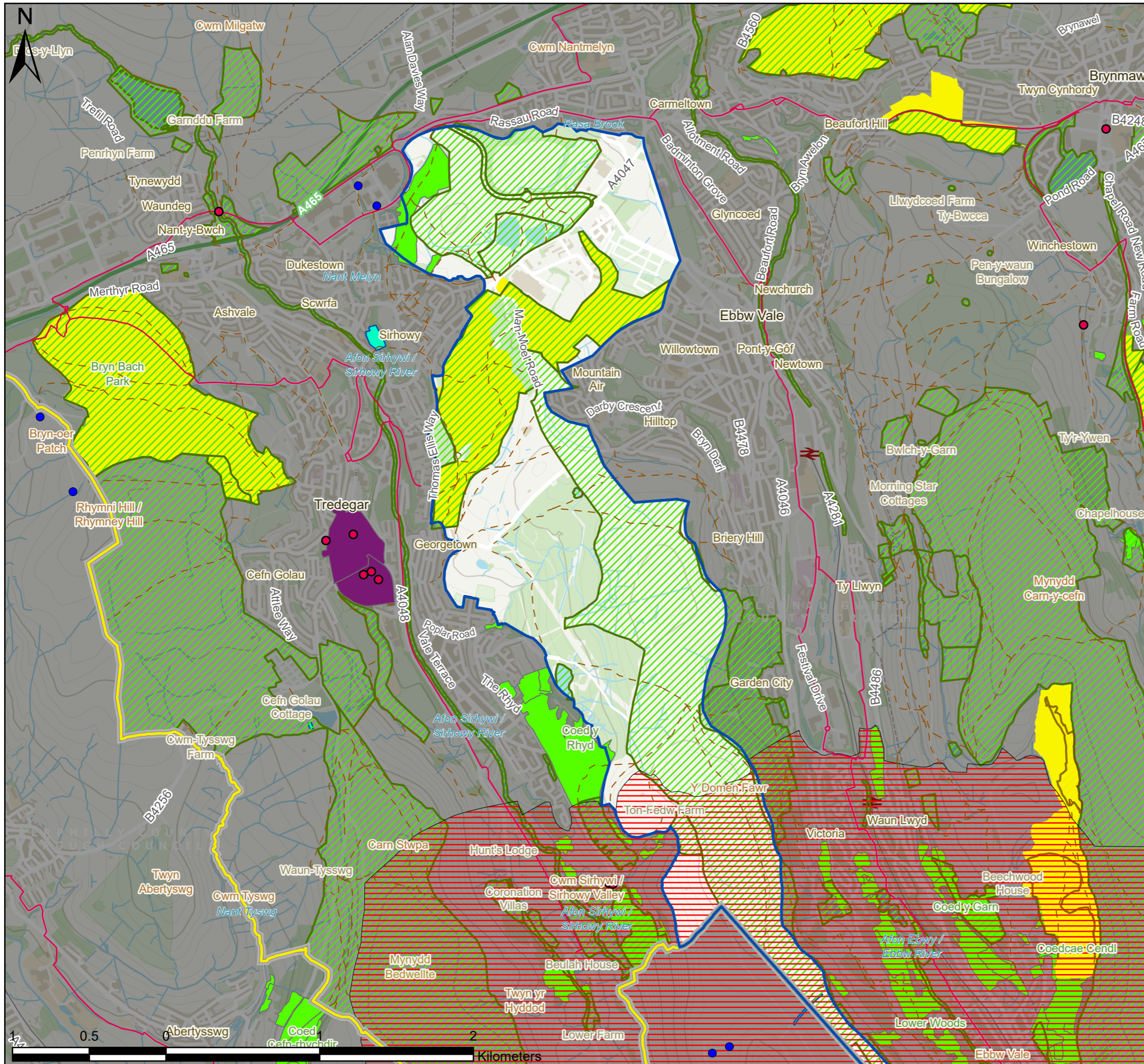
There are no turbines currently within this landscape unit. The landscape sensitivity is medium. There are two groups of turbines sited to the west in Crown Industrial estate and three to the north west on Manmoel within Caerphilly. The southern ridge of Cefn Manmoel falls within the Pre-Assessed Areas for wind development. Cumulative effects with this existing and proposed development should be considered.

Small to medium scale wind development should be considered within this area, following the guidance on siting described above and with care to avoid cumulative effects with the PAA development and existing wind turbines.

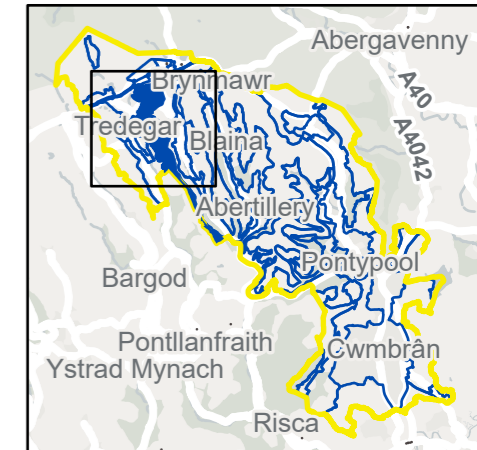
Solar PV

There is currently no solar farm development within this landscape unit. The landscape sensitivity is medium. With careful layout to avoid significant effects on residential and recreational receptors there may be potential to site small to medium scale developments within the area, following the guidance set out above.

For Local Landscape Constraints see Figure 7.13.1 and 7.13.2



- Existing Wind Turbines
- Listed Buildings
- ▭ Landscape Area Unit
- ▭ Study Area
- ▭ Local Authorities
- National Cycle Network
- - - BGCBC and TCBC Public Rights of Way
- ▭ Pre-Assessed Areas for Wind Energy
- ▭ Sites of Special Scientific Interest
- ▭ BGCBC and TCBC Sites of Importance for Nature Conservation
- ▭ Conservation Areas
- ▭ Scheduled Monuments
- ▭ Historic Parks and Gardens
- ▭ Local Nature Reserves
- ▭ Ancient Woodland



P3	FI	28/10/2021	Client feedback	TW	ZS	LC
P2	FI	06/07/2021	Client feedback	TW	ZS	LC
P1	S3	10/06/2021	First issue	TW	ZS	LC
V.	S.	Date	Description	B.	C.	A.

- Environmental Consultants
- Planners
- Landscape Architects
- Landscape Managers
- Urban Designers
- Ecologists

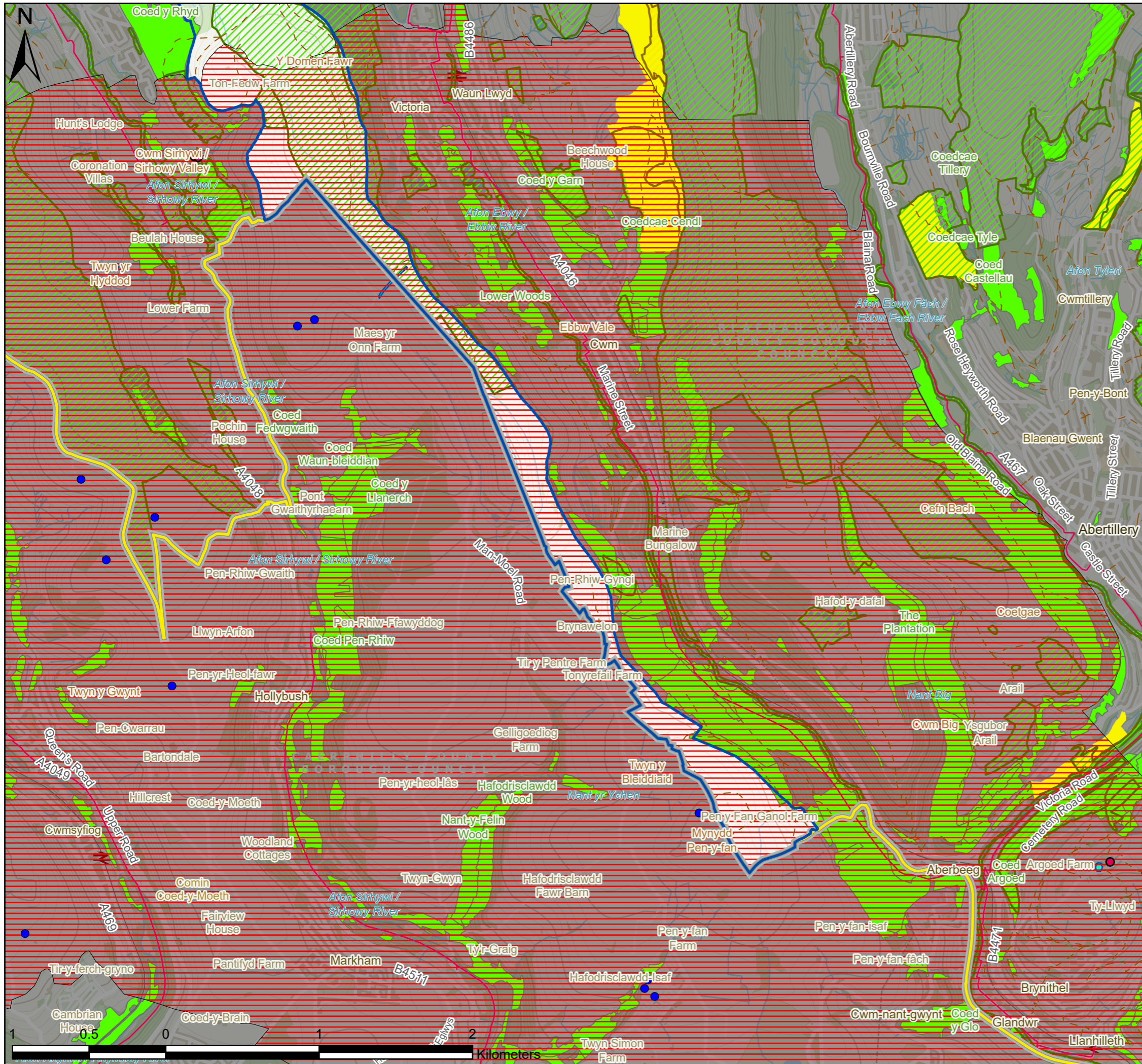


10 Park Grove, Cardiff, CF10 3BN • 02920 228966 • admin@tacp.co.uk

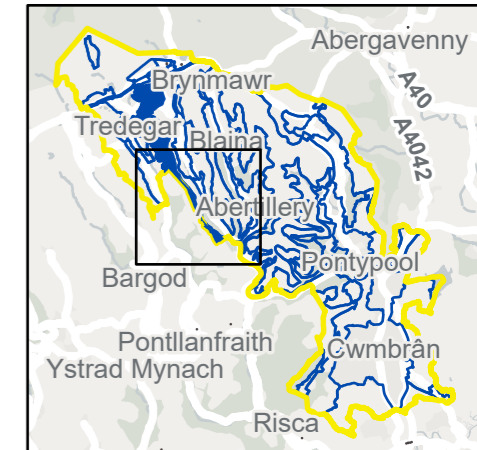
Blaenau Gwent and Torfaen County Borough Councils
Sensitivity and Capacity Study for Renewable Energy Development

Figure 7.13.1
 LAU 13 Landscape Constraints (Sheet 1 of 2)

Drawing no.: 61007_DWG_F7-13-1LAU13



- Existing Wind Turbines
- Listed Buildings
- ▭ Landscape Area Unit
- ▭ Study Area
- ▭ Local Authorities
- National Cycle Network
- - - BGCBC and TCBC Public Rights of Way
- ▨ Pre-Assessed Areas for Wind Energy
- ▨ Sites of Special Scientific Interest
- ▨ BGCBC and TCBC Sites of Importance for Nature Conservation
- ▨ Scheduled Monuments
- ▨ Local Nature Reserves
- ▨ Ancient Woodland



P3	FI	28/10/2021	Client feedback	TW	ZS	LC
P2	FI	06/07/2021	Client feedback	TW	ZS	LC
P1	S3	10/06/2021	First issue	TW	ZS	LC
V.	S.	Date	Description	B.	C.	A.

• Environmental Consultants
 • Planners
 • Landscape Architects
 • Landscape Managers
 • Urban Designers
 • Ecologists



10 Park Grove, Cardiff, CF10 3BN • 02920 228966 • admin@tacp.co.uk

Blaenau Gwent and Torfaen County Borough Councils
Sensitivity and Capacity Study for Renewable Energy Development

Figure 7.13.2
 LAU 13 Landscape Constraints (Sheet 2 of 2)

Drawing no.: 61007_DWG_F7-13-2LAU13

LAU 16: EBBW VALE

Susceptibility to Wind and Solar development

Combined summary of landscape susceptibility

Criteria	Description	Score		
		Low	Med	High
Landscape susceptibility				
Scale	Large scale	Yellow		
Landform	Disturbed land including reclamation and infrastructure	Yellow		
Landcover	Mixed urban and industrial use interspersed with open areas of amenity and informal woodland and open space.	Yellow		
Built environment	Linear primarily industrial and modern development along valley corridor, infrastructure including railway and A4046.	Yellow		
Visual susceptibility				
Skylines and settings	Existing vertical large-scale development and infrastructure.	Yellow		
Movement	Constant activity of vehicles and workplaces.	Yellow		
Visibility, quality of views	Open linear landscape with views in available from neighbouring ridges. Topography, development and vegetation constrains views out.		Orange	
Views in/out	Attractive views out to valley sides, with detractive views both in and out.	Yellow		
Typical receptors	Residential receptors throughout, recreational receptors particularly in Eugene Cross Park, sports pitches to south and adjacent valley sides. Workplace receptors and road users throughout.			Red
Scenic quality and character	Low scenic quality, strong landscape character and moderate integrity.		Orange	

Criteria	Description	Score		
		Low	Med	High
Value				
Landscape value (designations)	A small number of listed buildings within Ebbw Vale town to the north. Ancient woodland sites around Festival Park.		Orange	
Visual/sensory	LANDMAP overall evaluation	Yellow		
Historic value	LANDMAP overall evaluation		Orange	
Habitats value	LANDMAP overall evaluation	Yellow		
Geological value	LANDMAP overall evaluation		Orange	
Visual value (key views/vistas)	No intervisibility with important cultural features or national trails	Yellow		
Aesthetic, perceptual, experiential	A strong sense of place derived from settled industrial character and valley context. But discordant development creates some negative perceived unattractive qualities such as threat.		Orange	

Landscape Sensitivity

Summary of Sensitivity - Wind	Assessed Sensitivity				
The assessment identifies that the landform and visual qualities of the area would be able to accommodate a significant amount of change without affecting landscape character.	V	Low	Med	High	V
	Low	Yellow	Orange	Red	High
	Yellow				

Summary of Sensitivity - Solar	Assessed Sensitivity				
The landscape is assessed as of very low sensitivity with a high tolerance of change of this nature.	V	Low	Med	High	V
	Low	Yellow	Orange	Red	High
	Yellow				

Guidance on Siting

The following advice should be considered for renewables development within this landscape unit:

Wind turbines

- Consider opportunities for siting turbines alongside existing linear infrastructure but avoid the cumulative effect of a turbine corridor.
- Avoid development within existing recreational sites such as Eugene Cross Park.
- Consider opportunities for siting turbines in land adjacent to existing industrial development, where this may partially screen it and be an appropriate context.
- Avoid negative effects the setting of listed buildings and residential areas.

Solar PV

- Consider opportunities for siting solar farms within the setting of existing development and infrastructure.
- Consider using existing woodland to screen solar development from wider views.
- Respect the setting of listed buildings.
- Avoid siting solar farms adjacent to existing settlements.

Any development should be subject to a detailed environmental impact assessment including landscape, cultural heritage and biodiversity as a minimum.

Landscape capacity

Total area of LAU: 266 Ha.

It should be recognised that although this area is recorded in LANDMAP as developed unbuilt land, there is extensive existing development, including residential areas. The assessment was undertaken with a view that there may still be opportunities for renewables development in remaining areas of unused open space. This should be considered in the context of other local planning priorities.

Wind turbines

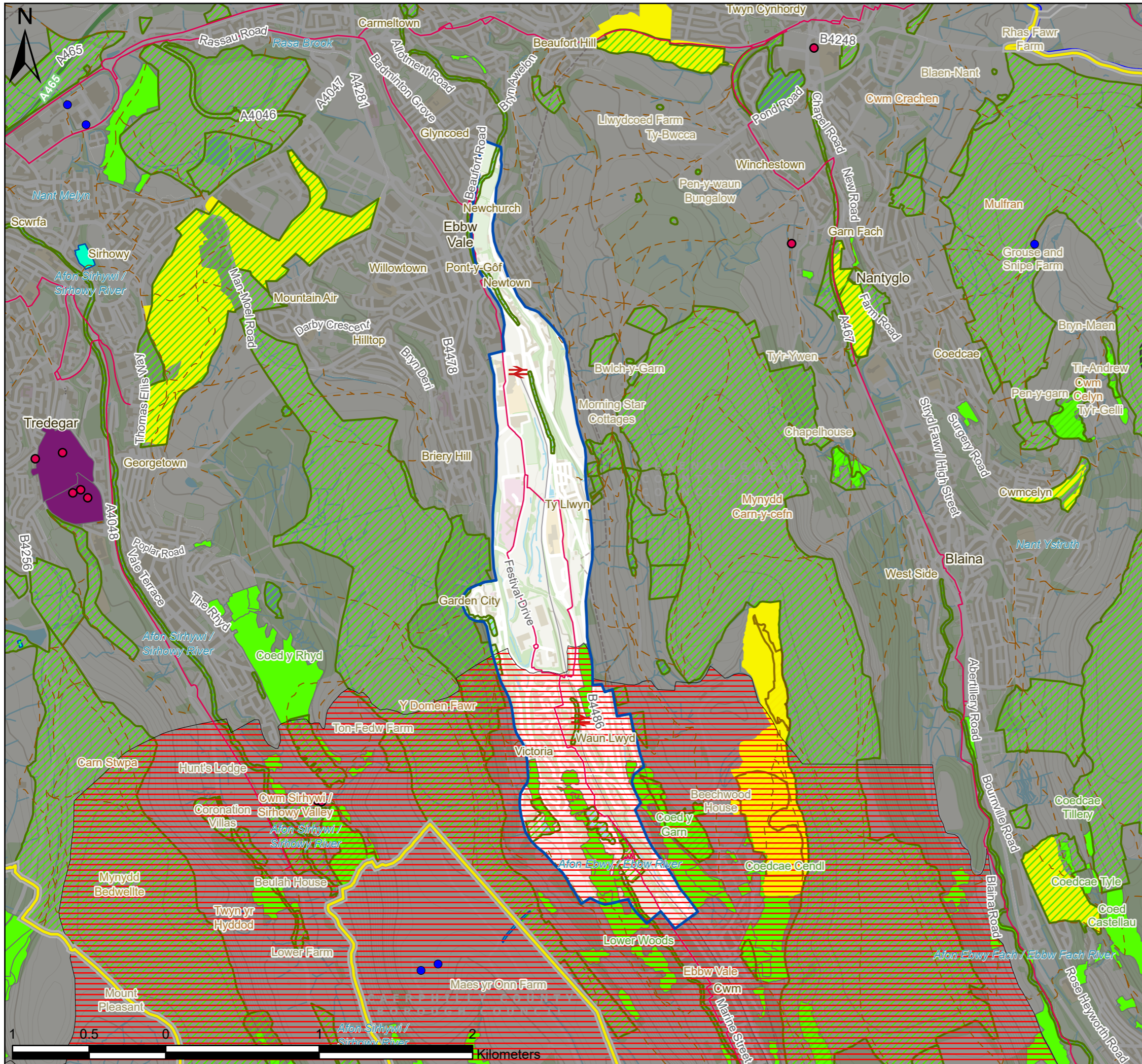
There are no turbines currently within this landscape unit. The southern part of the area falls within the Pre-Assessed Areas for wind development. The landscape sensitivity is very low.

Individual and small groups of turbines may be considered within this area, where practical constraints and existing use allow. This should follow the guidance on siting described above with care to avoid cumulative effects with the PAA development.

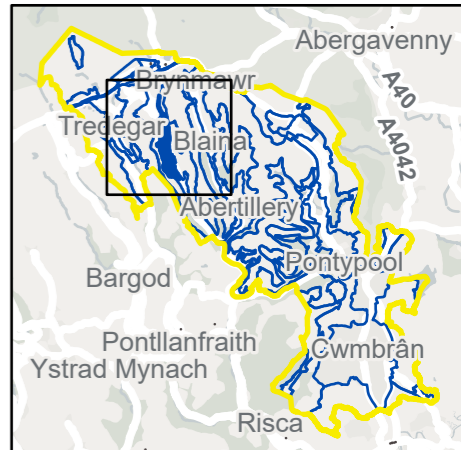
Solar PV

There is currently no solar farm development within this landscape unit. The landscape sensitivity is very low. With careful layout to avoid significant effects on residential and recreational receptors there may be potential to site small scale developments within the area, following the guidance set out above. It may be more appropriate to review opportunities for roof mounted solar in this area.

For Local Landscape Constraints see Figure 7.16.1



- Existing Wind Turbines
- Listed Buildings
- ▭ Landscape Area Unit
- ▭ Study Area
- ▭ Local Authorities
- ▭ Brecon Beacons National Park
- ▭ National Cycle Network
- ▭ BGCBC and TCBC Public Rights of Way
- ▭ Pre-Assessed Areas for Wind Energy
- ▭ Sites of Special Scientific Interest
- ▭ BGCBC and TCBC Sites of Importance for Nature Conservation
- ▭ Historic Landscapes
- ▭ Conservation Areas
- ▭ Scheduled Monuments
- ▭ Historic Parks and Gardens
- ▭ Local Nature Reserves
- ▭ Ancient Woodland



P3	FI	28/10/2021	Client feedback	TW	ZS	LC
P2	FI	06/07/2021	Client feedback	TW	ZS	LC
P1	S3	10/06/2021	First issue	TW	ZS	LC
V.	S.	Date	Description	B.	C.	A.

- Environmental Consultants
- Planners
- Landscape Architects
- Landscape Managers
- Urban Designers
- Ecologists



10 Park Grove, Cardiff, CF10 3BN • 02920 228966 • admin@tacp.co.uk

Blaenau Gwent and Torfaen County Borough Councils
Sensitivity and Capacity Study for Renewable Energy Development

Figure 7.16.1
 LAU 16 Landscape Constraints (Sheet 1 of 1)

Drawing no.: 61007_DWG_F7-16-1LAU16

LAU 18: MYNYDD CARN-Y-CEFN

Susceptibility to Wind and Solar development

Combined summary of landscape susceptibility

Criteria	Description	Score		
		Low	Med	High
Landscape susceptibility				
Scale	Medium scale		Med	
Landform	Undulating broad hilltop ridge			High
Landcover	Golf course to north mosaic of grass and scrub, heath upland, small field parcels with overgrown hedgerows to south. Also includes Beaufort Hill, a mosaic of natural and amenity vegetation.			High
Built environment	Largely undeveloped, with the exception of golf course.			High
Visual susceptibility				
Skylines and settings	Undeveloped skyline partially visible from adjacent valleys and ridges.			High
Movement	Infrequent activity		Med	
Visibility, quality of views	Enclosed by historic stone and hedge field boundaries and woodland to south. Extensive views out.		Med	
Views in/out	Attractive and detractive views both in and out.		Med	
Typical receptors	Recreational receptors, workers on the land.			High
Scenic quality and character	Moderate scenic quality, landscape character and integrity.		Med	

Criteria	Description	Score		
		Low	Med	High
Value				
Landscape value (designations)	SINC across central grass and heathland on ridge. Parc Nant-Y-Waun and Beaufort Hill Local Nature Reserves and SINCs on far northern end.		Med	
Visual/sensory	LANDMAP overall evaluation		Med	
Historic value	LANDMAP overall evaluation			High
Habitats value	LANDMAP overall evaluation		Med	
Geological value	LANDMAP overall evaluation			High
Visual value (key views/vistas)	Intermittent intervisibility with BBNP in northern sections. NCN Route 46 crosses north of Golf club.	Low		
Aesthetic, perceptual, experiential	A strong sense of place. However, the area can feel noisy and exposed in places	Low		

Landscape Sensitivity

Summary of Sensitivity - Wind	Assessed Sensitivity				
The assessment identifies that the area is of high sensitivity. Meaning the landform and visual qualities of the area would only be able to accommodate this type of development in limited situations.	V Low	Low	Med	High	V High
				High	

Summary of Sensitivity - Solar	Assessed Sensitivity				
The landscape is assessed as of high sensitivity with a low tolerance of change of this nature.	V Low	Low	Med	High	V High
				High	

Guidance on Siting

The following advice should be considered for renewables development within this landscape unit:

Wind turbines

- Avoid placing turbines on narrow sections of ridge where they will appear on the skyline.
- Consider siting turbines in the southern part of the area, where existing woodland may provide some screening and there are fewer sensitive receptors.
- Avoid siting turbines within nature reserves or where they may impact on wildlife routes to them.

Solar PV

- Consider opportunities to use the undulating topography to screen solar development from wider views.
- Avoid placing solar on north facing slopes where these will be visible from the National Park.
- Consider siting solar farms in the southern part of the area, within existing field boundaries which may be enhanced to screen the development.
- Avoid siting within SINCS unless land management can be consistent with and support conservation objectives.

Any development should be subject to a detailed environmental impact assessment including landscape, cultural heritage and biodiversity as a minimum.

Landscape capacity

Total area of LAU: 1,059 Ha.

This is one of the larger areas, but also highly sensitive due to its undeveloped condition.

Wind turbines

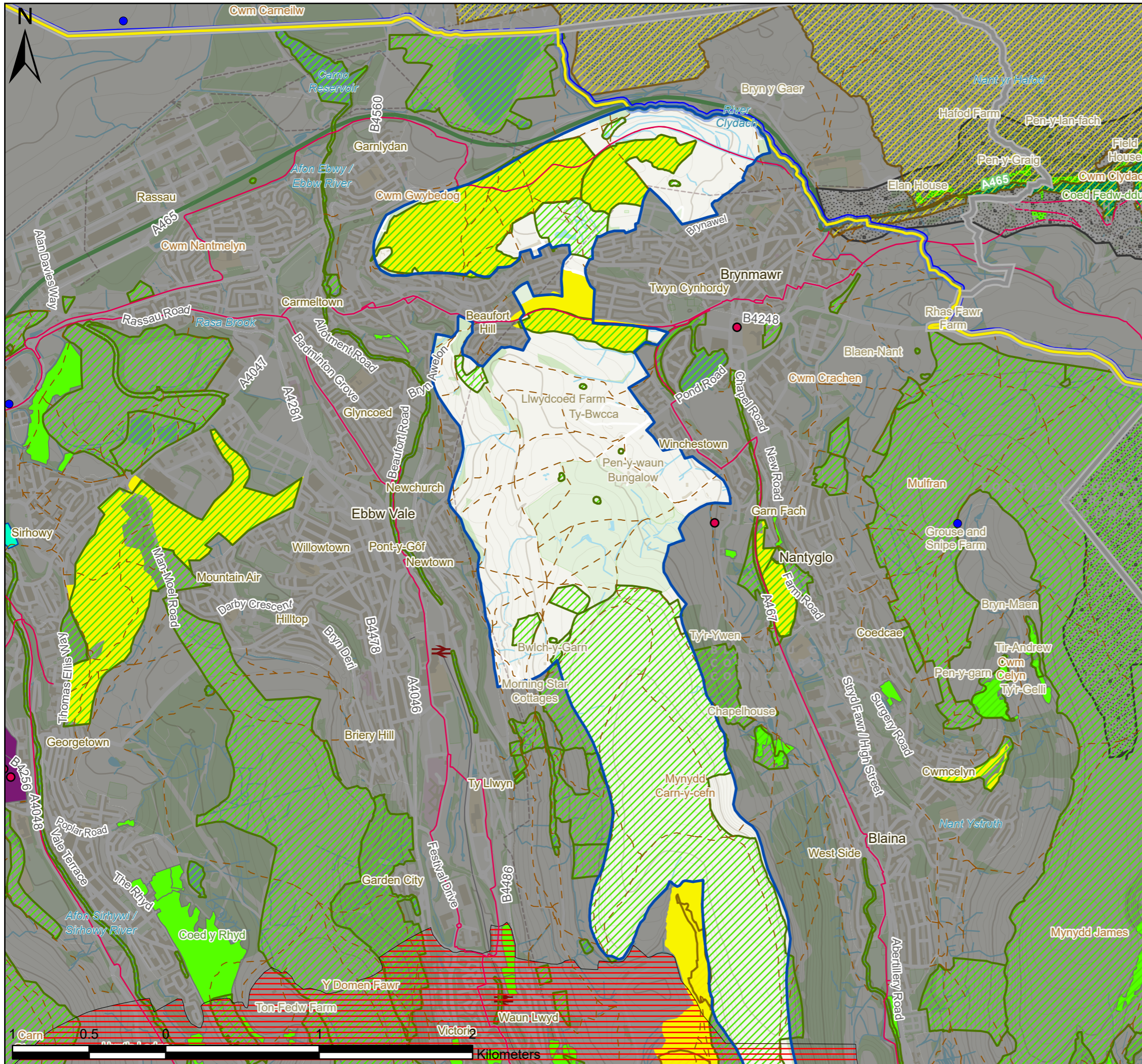
There are no turbines currently within this landscape unit. The southern part of the area falls within the Pre-Assessed Areas for wind development. The landscape sensitivity is high.

Individual and small groups of turbines may be considered within this area. This should follow the guidance on siting described above with care to avoid cumulative effects with the PAA development.

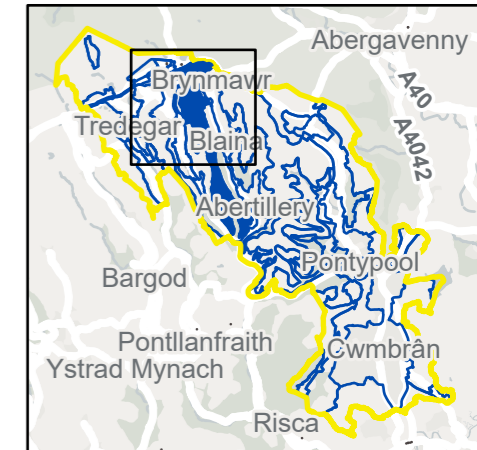
Solar PV

There is currently a medium scale solar farm in the southwestern section of this landscape unit. The area is well enclosed by existing woodland and forestry blocks and the development has been sited in existing field parcels, thereby reducing its effect on landscape character. The landscape sensitivity is high and cumulative effects with the existing solar development should be considered. A low number of medium scale solar developments could be considered, sited in accordance with the guidance above to minimise effects on landscape character.

For Local Landscape Constraints see Figure 7.18.1 and 7.18.2



- Existing Wind Turbines
- Listed Buildings
- ▭ Landscape Area Unit
- ▭ Study Area
- ▭ Local Authorities
- ▭ Brecon Beacons National Park
- ▭ National Cycle Network
- ▭ BGBC and TCBC Public Rights of Way
- ▭ Pre-Assessed Areas for Wind Energy
- ▭ Sites of Special Scientific Interest
- ▭ Special Areas of Conservation
- ▭ BGBC and TCBC Sites of Importance for Nature Conservation
- ▭ Historic Landscapes
- ▭ Conservation Areas
- ▭ Scheduled Monuments
- ▭ Historic Parks and Gardens
- ▭ Local Nature Reserves
- ▭ National Nature Reserves
- ▭ Ancient Woodland



P3	FI	28/10/2021	Client feedback	TW	ZS	LC
P2	FI	06/07/2021	Client feedback	TW	ZS	LC
P1	S3	10/06/2021	First issue	TW	ZS	LC
V.	S.	Date	Description	B.	C.	A.

- Environmental Consultants
- Planners
- Landscape Architects
- Landscape Managers
- Urban Designers
- Ecologists



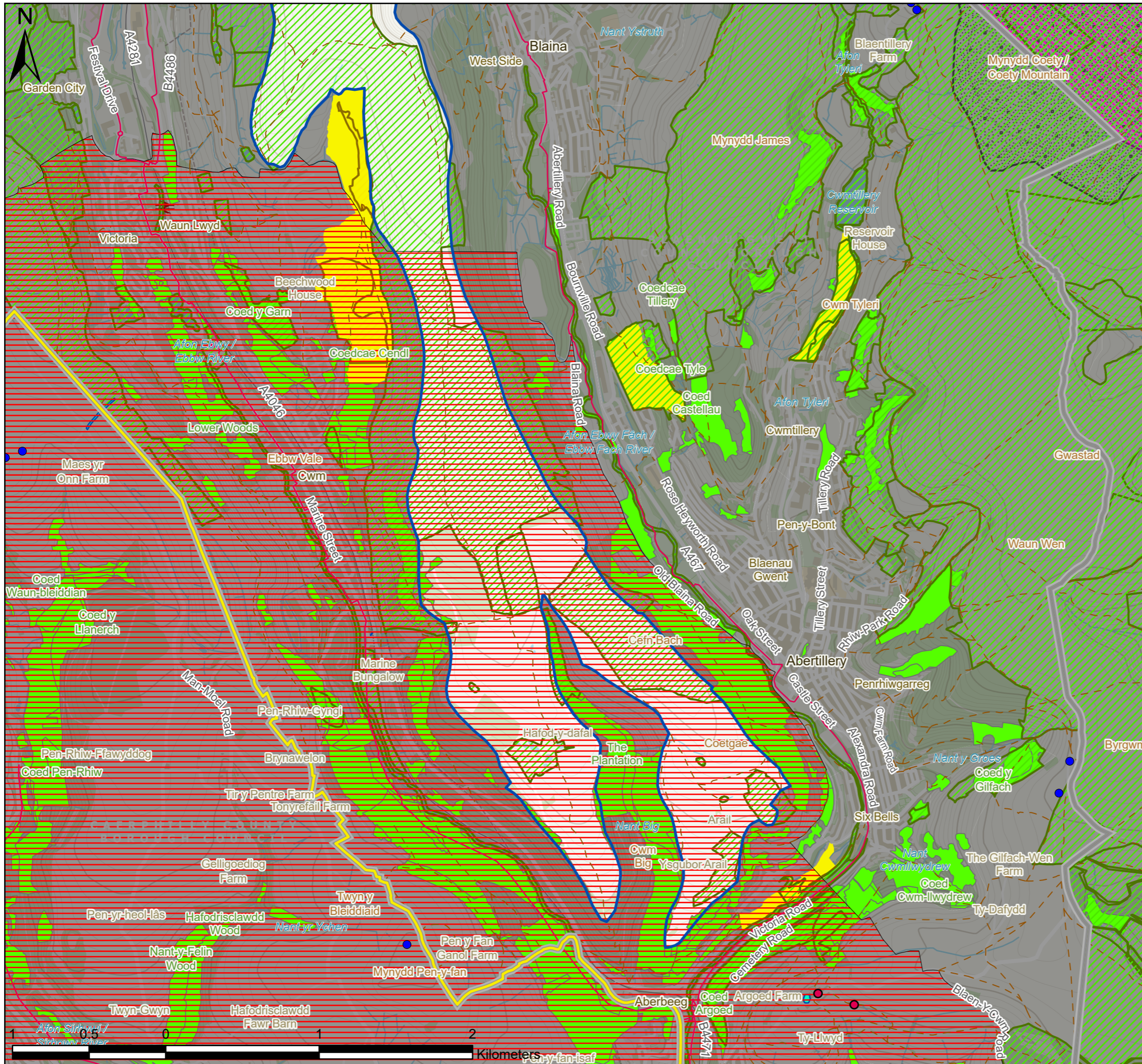
TACP

10 Park Grove, Cardiff, CF10 3BN • 02920 228966 • admin@tacp.co.uk

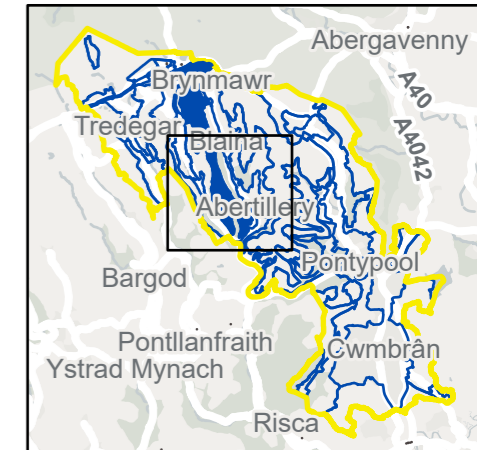
Blaenau Gwent and Torfaen County Borough Councils
Sensitivity and Capacity Study for Renewable Energy Development

Figure 7.18.1
 LAU 18 Landscape Constraints (Sheet 1 of 2)

Drawing no.: 61007_DWG_F7-18-1LAU18



- Existing Wind Turbines
- Listed Buildings
- ▭ Landscape Area Unit
- ▭ Study Area
- ▭ Local Authorities
- National Cycle Network
- - - BGCBC and TCBC Public Rights of Way
- ▭ Pre-Assessed Areas for Wind Energy
- ▭ Sites of Special Scientific Interest
- ▭ BGCBC and TCBC Sites of Importance for Nature Conservation
- ▭ Blaenavon World Heritage Site
- ▭ Historic Landscapes
- ▭ Scheduled Monuments
- ▭ Local Nature Reserves
- ▭ Ancient Woodland



P3	FI	28/10/2021	Client feedback	TW	ZS	LC
P2	FI	06/07/2021	Client feedback	TW	ZS	LC
P1	S3	10/06/2021	First issue	TW	ZS	LC
V.	S.	Date	Description	B.	C.	A.

• Environmental Consultants
 • Planners
 • Landscape Architects
 • Landscape Managers
 • Urban Designers
 • Ecologists



10 Park Grove, Cardiff, CF10 3BN • 02920 228966 • admin@tacp.co.uk

Blaenau Gwent and Torfaen County Borough Councils
Sensitivity and Capacity Study for Renewable Energy Development

Figure 7.18.2
 LAU 18 Landscape Constraints (Sheet 2 of 2)

Drawing no.: 61007_DWG_F7-18-2LAU18

LAU 20: EBBW VALLEY SIDES INCLUDING EAST OF CARN-Y-CEFN

Susceptibility to Wind and Solar development

Combined summary of landscape susceptibility

Criteria	Description	Score		
		Low	Med	High
Landscape susceptibility				
Scale	Large scale	Low		
Landform	Steep and undulating valley sides			High
Landcover	Mosaic of woodland, heath, grass, scrub and bracken and historic workings.			High
Built environment	Largely undeveloped, with the exception of Silent Valley Landfill site. Includes settlement edge (Winchestown) of Brynmawr.			High
Visual susceptibility				
Skylines and settings	Less prominent skyline, ridge forms boundary with next area.	Low		
Movement	Infrequent activity		Med	
Visibility, quality of views	An open landscape with views restricted and framed by woodland and topography.		Med	
Views in/out	Attractive and detractive views both in and out.		Med	
Typical receptors	Recreational receptors, especially at Silent Valley Local Nature Reserve, workers on the land. Residential receptors in adjacent valley settlements.			High
Scenic quality and character	Moderate scenic quality, landscape character and integrity.		Med	

Criteria	Description	Score		
		Low	Med	High
Value				
Landscape value (designations)	Multiple ancient woodland sites, especially in southern half of area. Includes Silent Valley Local Nature Reserve. Also, multiple SINCs throughout. Listed furnace at Llandafal and small group of listed farm buildings near Nantyglo.		Med	
Visual/sensory	LANDMAP overall evaluation			High
Historic value	LANDMAP overall evaluation		Med	
Habitats value	LANDMAP overall evaluation	Low		
Geological value	LANDMAP overall evaluation		Med	
Visual value (key views/vistas)	No intervisibility with important cultural features or national trails	Low		
Aesthetic, perceptual, experiential	A strong sense of place, however, can feel exposed and threatening in places, sheltered in others.	Low		

Landscape Sensitivity

Summary of Sensitivity - Wind	Assessed Sensitivity				
The assessment identifies that the area is of medium sensitivity. Meaning the landform and visual qualities of the area would have some potential to accommodate this type of development in particular areas	V Low	Low	Med	High	V High

Summary of Sensitivity - Solar	Assessed Sensitivity				
The landscape is assessed as of medium sensitivity with some tolerance of change of this nature without significant effects on landscape character.	V Low	Low	Med	High	V High

Guidance on Siting

The following advice should be considered for renewables development within this landscape unit:

Wind turbines

- Consider siting turbines in the southern part of the area, where existing woodland may provide some screening and there are fewer sensitive receptors.
- Avoid siting turbines within nature reserves or where they may impact on wildlife routes to them.
- Avoid siting turbines in the northeast section adjacent to settlement and listed buildings.

Solar PV

- Consider siting solar farms in the southern part of the area, where existing woodland may provide screening for the development.
- Avoid siting within SINCS unless land management can be consistent with and support conservation objectives.
- Consider using existing field patterns and seek opportunities to enhance boundaries.

Any development should be subject to a detailed environmental impact assessment including landscape, cultural heritage, and biodiversity as a minimum.

Landscape capacity

Total area of LAU: 1,290 Ha.

This is one of the larger areas, but also includes many steep slopes which may constrain access and development.

Wind turbines

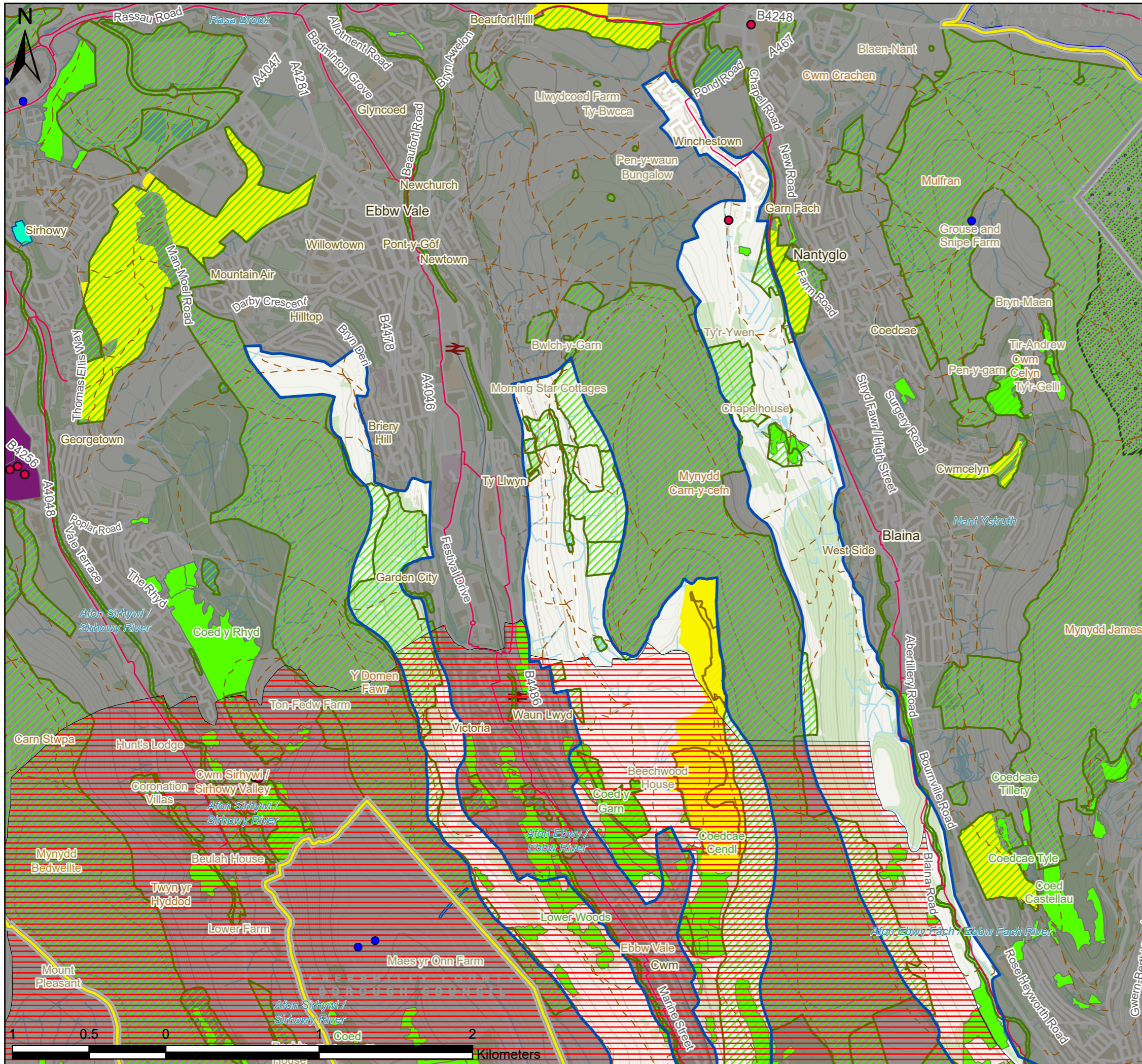
There are no turbines currently within this landscape unit. The southern part of the area falls within the Pre-Assessed Areas for wind development. The landscape sensitivity is medium.

Individual and small groups of turbines may be considered within this area. This should follow the guidance on siting described above with care to avoid cumulative effects with the PAA development.

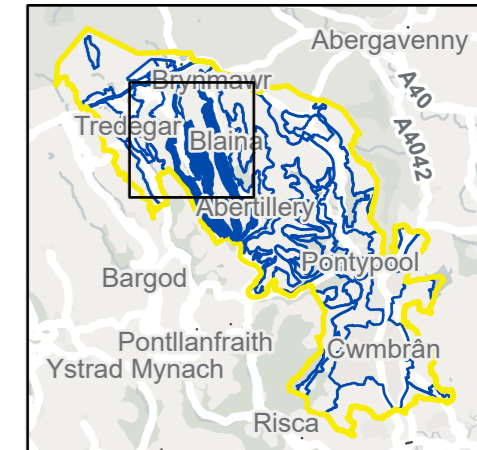
Solar PV

There is currently no solar development within this landscape unit. The landscape sensitivity is medium. A low number of medium scale solar developments could be considered, sited in accordance with the guidance above to minimise effects on landscape character.

For Local Landscape Constraints see Figure 7.20.1 and 7.20.2



- Existing Wind Turbines
- Listed Buildings
- ▭ Landscape Area Unit
- ▭ Study Area
- ▭ Local Authorities
- ▭ Brecon Beacons National Park
- ▭ National Cycle Network
- ▭ BGBC and TCBC Public Rights of Way
- ▭ Pre-Assessed Areas for Wind Energy
- ▭ Sites of Special Scientific Interest
- ▭ BGBC and TCBC Sites of Importance for Nature Conservation
- ▭ Historic Landscapes
- ▭ Conservation Areas
- ▭ Scheduled Monuments
- ▭ Historic Parks and Gardens
- ▭ Local Nature Reserves
- ▭ Ancient Woodland



P3	FI	28/10/2021	Client feedback	TW	ZS	LC
P2	FI	06/07/2021	Client feedback	TW	ZS	LC
P1	S3	10/06/2021	First issue	TW	ZS	LC
V.	S.	Date	Description	B.	C.	A.

• Environmental Consultants
 • Planners
 • Landscape Architects
 • Landscape Managers
 • Urban Designers
 • Ecologists

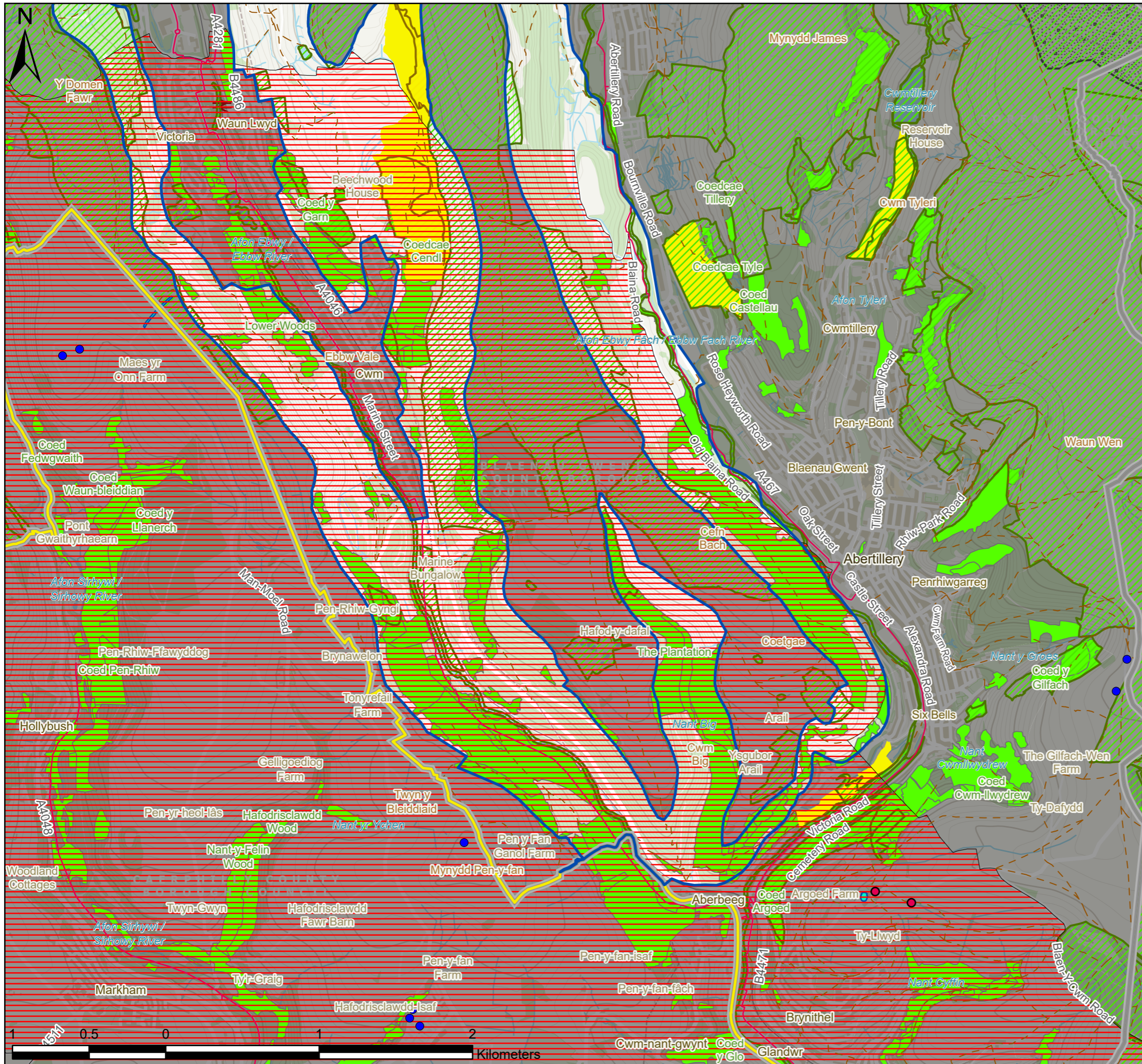


10 Park Grove, Cardiff, CF10 3BN • 02920 228966 • admin@tacp.co.uk

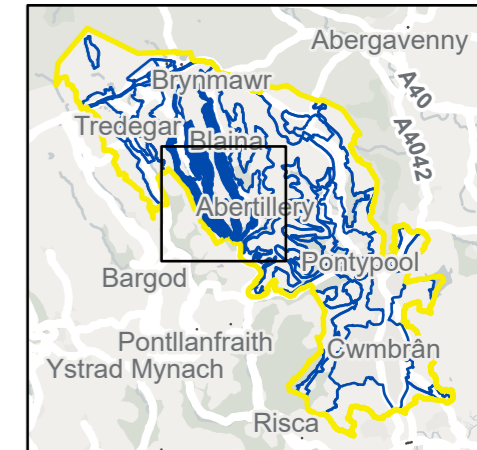
Blaenau Gwent and Torfaen County Borough Councils
Sensitivity and Capacity Study for Renewable Energy Development

Figure 7.20.1
 LAU 20 Landscape Constraints (Sheet 1 of 2)

Drawing no.: 61007_DWG_F7-20-1LAU20



- Existing Wind Turbines
- Listed Buildings
- ▭ Landscape Area Unit
- ▭ Study Area
- ▭ Local Authorities
- National Cycle Network
- - - BGCBC and TCBC Public Rights of Way
- ▨ Pre-Assessed Areas for Wind Energy
- ▨ Sites of Special Scientific Interest
- ▨ BGCBC and TCBC Sites of Importance for Nature Conservation
- ▨ Blaenavon World Heritage Site
- ▨ Historic Landscapes
- ▨ Scheduled Monuments
- ▨ Local Nature Reserves
- ▨ Ancient Woodland



P3	FI	28/10/2021	Client feedback	TW	ZS	LC
P2	FI	06/07/2021	Client feedback	TW	ZS	LC
P1	S3	10/06/2021	First issue	TW	ZS	LC
V.	S.	Date	Description	B.	C.	A.

• Environmental Consultants
 • Planners
 • Landscape Architects
 • Landscape Managers
 • Urban Designers
 • Ecologists



10 Park Grove, Cardiff, CF10 3BN • 02920 228966 • admin@tacp.co.uk

Blaenau Gwent and Torfaen County Borough Councils
 Sensitivity and Capacity Study for Renewable Energy Development

Figure 7.20.2
 LAU 20 Landscape Constraints (Sheet 2 of 2)

Drawing no.: 61007_DWG_F7-20-2LAU20

LAU 26: CWM-CELYN, CWMTILLERY & WAUN WEN VALLEY SIDE

Susceptibility to Wind and Solar development

Combined summary of landscape susceptibility

Criteria	Description	Score		
		Low	Med	High
Landscape susceptibility				
Scale	Medium scale			
Landform	Steep and varied enclosed small valleys and valley sides			
Landcover	A mix of woodland and fields with scattered settlement, forestry and scrub/heath mosaic on more elevated sections.			
Built environment	Largely unpopulated with traditional farming, forestry and some historic restored excavation and tips.			
Visual susceptibility				
Skylines and settings	Few prominent skylines.			
Movement	Infrequent activity			
Visibility, quality of views	Largely enclosed by the landform, these valleys have limited views in or out of the area.			
Views in/out	Predominantly attractive views in and out with few detractive elements			
Typical receptors	Occasional residential receptors, workers on the land and recreational visitors.			
Scenic quality and character	High scenic quality, landscape character and integrity.			

Criteria	Description	Score		
		Low	Med	High
Value				
Landscape value (designations)	Cwmtillery Lakes and Rosheyworth Local Nature Reserves. Frequent SINCs, especially on upland areas but also including Bourneville slip and Cwmtillery reservoir and lakes. Multiple ancient woodland sites both in the valleys and covering nearly the full extent of the southern part of the area, above Six Bells.			
Visual/sensory	LANDMAP overall evaluation			
Historic value	LANDMAP overall evaluation			
Habitats value	LANDMAP overall evaluation			
Geological value	LANDMAP overall evaluation			
Visual value (key views/vistas)	Due to the enclosed nature of the landscape, there is little intervisibility with important cultural sites. The woodland above Six Bells could be considered part of the setting of the St Ilityd landscape, including SM of castle mound nest to the listed parish church.			
Aesthetic, perceptual, experiential	A strong sense of place, due to inaccessibility and wooded character perceived as tranquil and sheltered.			

Landscape Sensitivity

Summary of Sensitivity - Wind	Assessed Sensitivity				
The assessment identifies that the landscape is of very high sensitivity, the strong landscape character of the area would be adversely affected by development of this type.	V	Low	Med	High	V
	Low				High

Summary of Sensitivity - Solar	Assessed Sensitivity				
The landscape is assessed as of very high sensitivity with a low tolerance to change and limited ability to accommodate this type of development.	V	Low	Med	High	V
	Low				High

Guidance on Siting

The following advice should be considered for renewables development within this landscape unit:

Wind turbines

- Consider opportunities for siting turbines in land adjacent to existing forestry sites which may partially screen it from wider views.
- Avoid negative effects from proximity to residential areas.

Solar PV

- Consider opportunities for siting solar farms where topography will limit wider views.
- Consider using existing woodland to screen solar development from wider views.
- Consider opportunities to utilise previously disturbed sites, where the development could contribute to strengthening boundaries and landscape character.
- Avoid siting solar farms adjacent to existing settlements.
- Avoid siting within SINCS unless land management can be consistent with and support conservation objectives.

Any development should be subject to a detailed environmental impact assessment including landscape, cultural heritage and biodiversity as a minimum.

Landscape capacity

Total area of LAU: 781 Ha.

Wind turbines

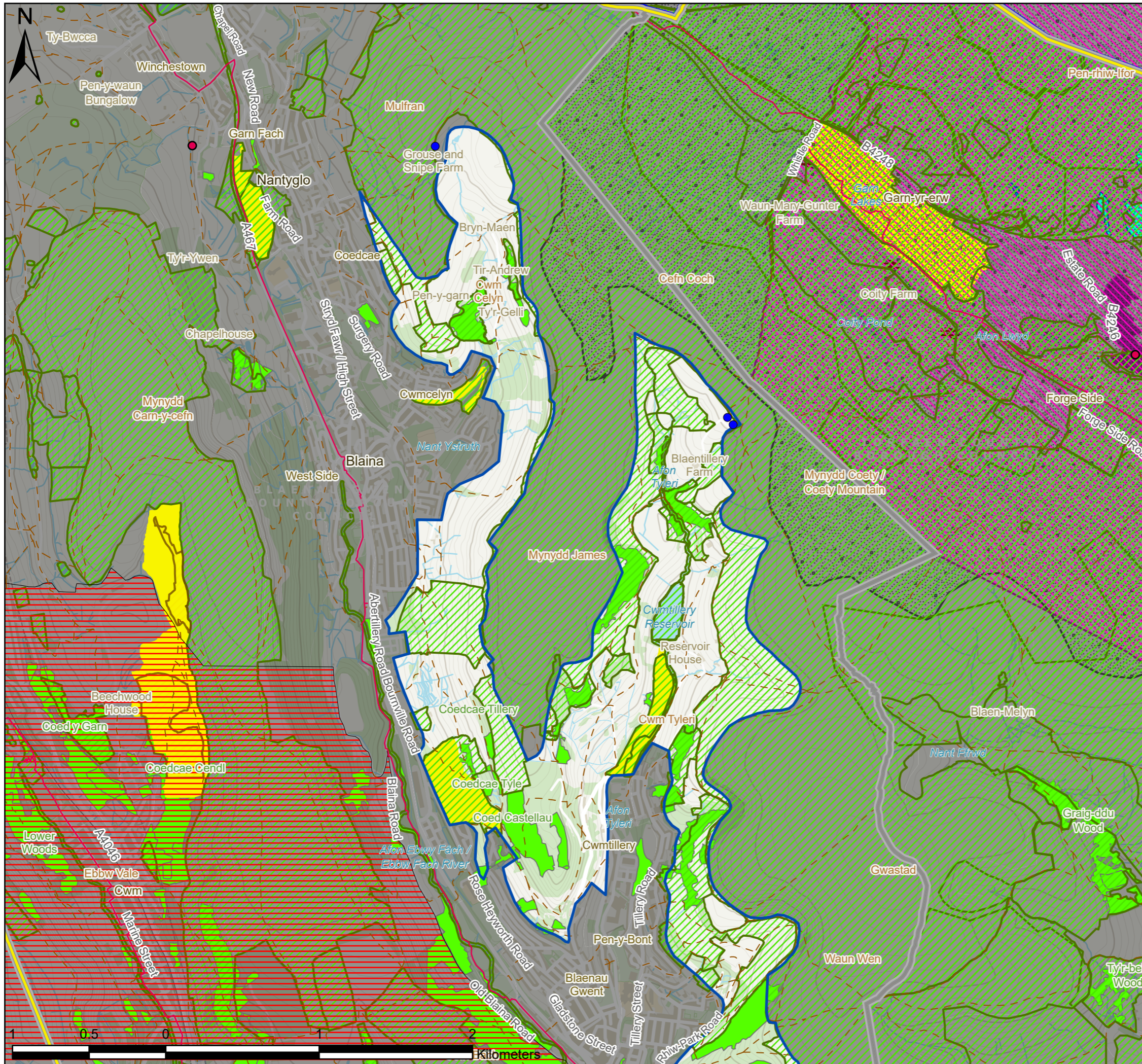
There are existing small scale wind turbines at the heads of both Cwm-Celin and Cwmtillery valley. There are also wind turbines immediately to the east of the area on the upland near Nant-y-Groes. The southern part of the area near Six Bells lies within the Pre-Assessed Area for wind. Siting any further development of this type would likely contribute to cumulative effects with this existing development.

Therefore, given the very high sensitivity of the landscape, no further wind development is recommended for this area.

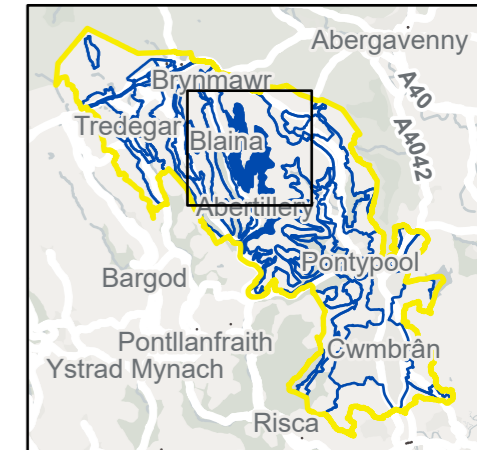
Solar PV

There is currently no solar farm development within this landscape unit. The landscape sensitivity is high. There may be opportunities to sensitively site small-scale developments within the area, following the guidance set out above.

For Local Landscape Constraints see Figure 7.26.1 and 7.26.2



- Existing Wind Turbines
- Listed Buildings
- ▭ Landscape Area Unit
- ▭ Study Area
- ▭ Local Authorities
- ▭ Brecon Beacons National Park
- ▭ National Cycle Network
- ▭ BGCBC and TCBC Public Rights of Way
- ▭ Pre-Assessed Areas for Wind Energy
- ▭ Sites of Special Scientific Interest
- ▭ BGCBC and TCBC Sites of Importance for Nature Conservation
- ▭ Blaenavon World Heritage Site
- ▭ Historic Landscapes
- ▭ Conservation Areas
- ▭ Scheduled Monuments
- ▭ Local Nature Reserves
- ▭ Ancient Woodland



P3	FI	28/10/2021	Client feedback	TW	ZS	LC
P2	FI	06/07/2021	Client feedback	TW	ZS	LC
P1	S3	10/06/2021	First issue	TW	ZS	LC
V.	S.	Date	Description	B.	C.	A.

- Environmental Consultants
- Planners
- Landscape Architects
- Landscape Managers
- Urban Designers
- Ecologists



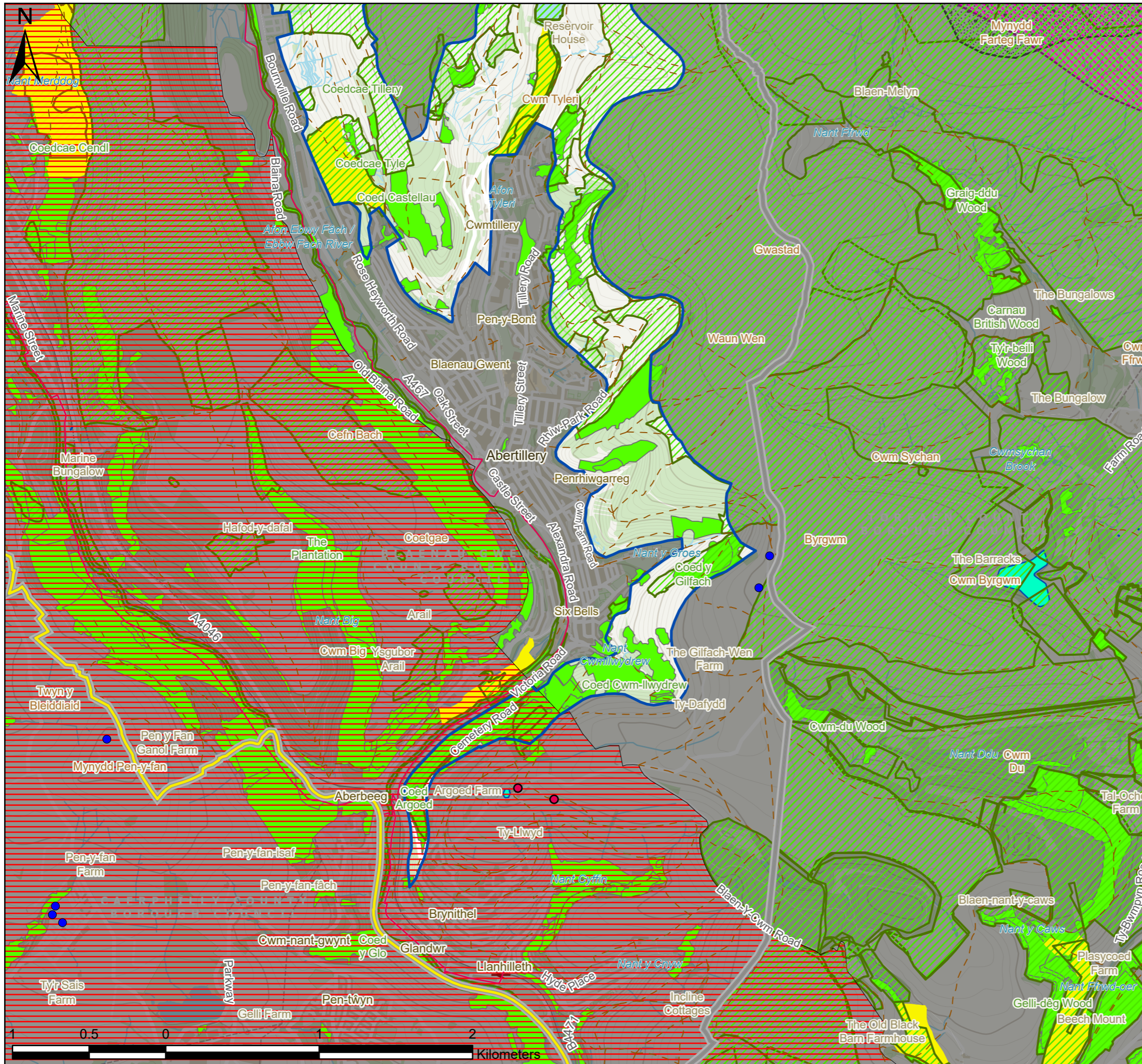
TACP

10 Park Grove, Cardiff, CF10 3BN • 02920 228966 • admin@tacp.co.uk

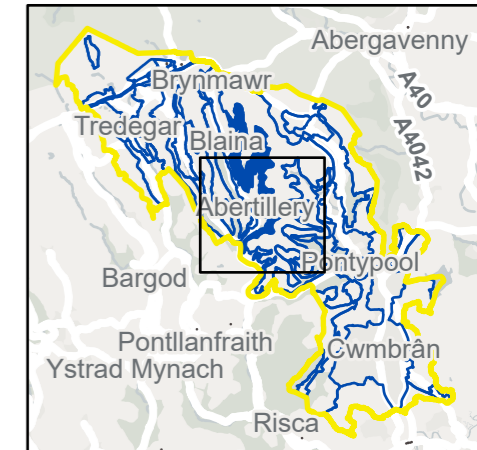
Blaenau Gwent and Torfaen County Borough Councils
Sensitivity and Capacity Study for Renewable Energy Development

Figure 7.26.1
 LAU 26 Landscape Constraints (Sheet 1 of 2)

Drawing no.: 61007_DWG_F7-26-1LAU26



- Existing Wind Turbines
- Listed Buildings
- ▭ Landscape Area Unit
- ▭ Study Area
- ▭ Local Authorities
- National Cycle Network
- - - BGCBC and TCBC Public Rights of Way
- ▭ Pre-Assessed Areas for Wind Energy
- ▭ Sites of Special Scientific Interest
- ▭ BGCBC and TCBC Sites of Importance for Nature Conservation
- ▭ Blaenavon World Heritage Site
- ▭ Historic Landscapes
- ▭ Scheduled Monuments
- ▭ Local Nature Reserves
- ▭ Ancient Woodland



P3	FI	28/10/2021	Client feedback	TW	ZS	LC
P2	FI	06/07/2021	Client feedback	TW	ZS	LC
P1	S3	10/06/2021	First issue	TW	ZS	LC
V.	S.	Date	Description	B.	C.	A.

• Environmental Consultants
 • Planners
 • Landscape Architects
 • Landscape Managers
 • Urban Designers
 • Ecologists



10 Park Grove, Cardiff, CF10 3BN • 02920 228966 • admin@tacp.co.uk

Blaenau Gwent and Torfaen County Borough Councils
Sensitivity and Capacity Study for Renewable Energy Development
 Figure 7.26.2
 LAU 26 Landscape Constraints (Sheet 2 of 2)

Drawing no.: 61007_DWG_F7-26-2LAU26

LAU 31: CWM CYFFIN

Susceptibility to Wind and Solar development

Combined summary of landscape susceptibility

Criteria	Description	Score		
		Low	Med	High
Landscape susceptibility				
Scale	Small scale			
Landform	Enclosed small valley			
Landcover	A mosaic of woodland and fields.			
Built environment	Unpopulated.			
Visual susceptibility				
Skylines and settings	No prominent skylines.			
Movement	Infrequent activity			
Visibility, quality of views	Largely enclosed by the landform, there are occasional views in and few views out.			
Views in/out	Predominantly attractive views in and out with few detractive elements			
Typical receptors	Primarily recreational visitors (open access and PRow), brief views from Blaencuffin road and residential receptors in adjacent Mount Pleasant Estate.			
Scenic quality and character	High scenic quality, landscape character and integrity.			

Criteria	Description	Score		
		Low	Med	High
Landscape value (designations)	Ancient woodland site extends to most of south and east of area.			
Visual/sensory	LANDMAP overall evaluation			
Historic value	LANDMAP overall evaluation			
Habitats value	LANDMAP overall evaluation			
Geological value	LANDMAP overall evaluation			
Visual value (key views/vistas)	Due to the enclosed nature of the landscape, there is little intervisibility with important cultural sites.			
Aesthetic, perceptual, experiential	A strong sense of place, due to inaccessibility and wooded character perceived as tranquil and sheltered.			

Landscape Sensitivity

Summary of Sensitivity - Wind	Assessed Sensitivity				
The assessment identifies that the landscape is of very high sensitivity, the strong landscape character of the area would be adversely affected by development of this type.	V Low	Low	Med	High	V High

Summary of Sensitivity - Solar	Assessed Sensitivity				
The landscape is assessed as of very high sensitivity with a low tolerance to change of this type.	V Low	Low	Med	High	V High

Guidance on Siting

The following advice should be considered for renewables development within this landscape unit:

Wind turbines

- Avoid negative effects from proximity to residential areas.

Solar PV

- Consider opportunities for siting solar farms where topography will limit wider views.
- Consider using existing woodland to screen solar development from wider views.
- Avoid siting solar farms adjacent to existing settlements.

Any development should be subject to a detailed environmental impact assessment including landscape, cultural heritage and biodiversity as a minimum.

Landscape capacity

Total area of LAU: 32 Ha.

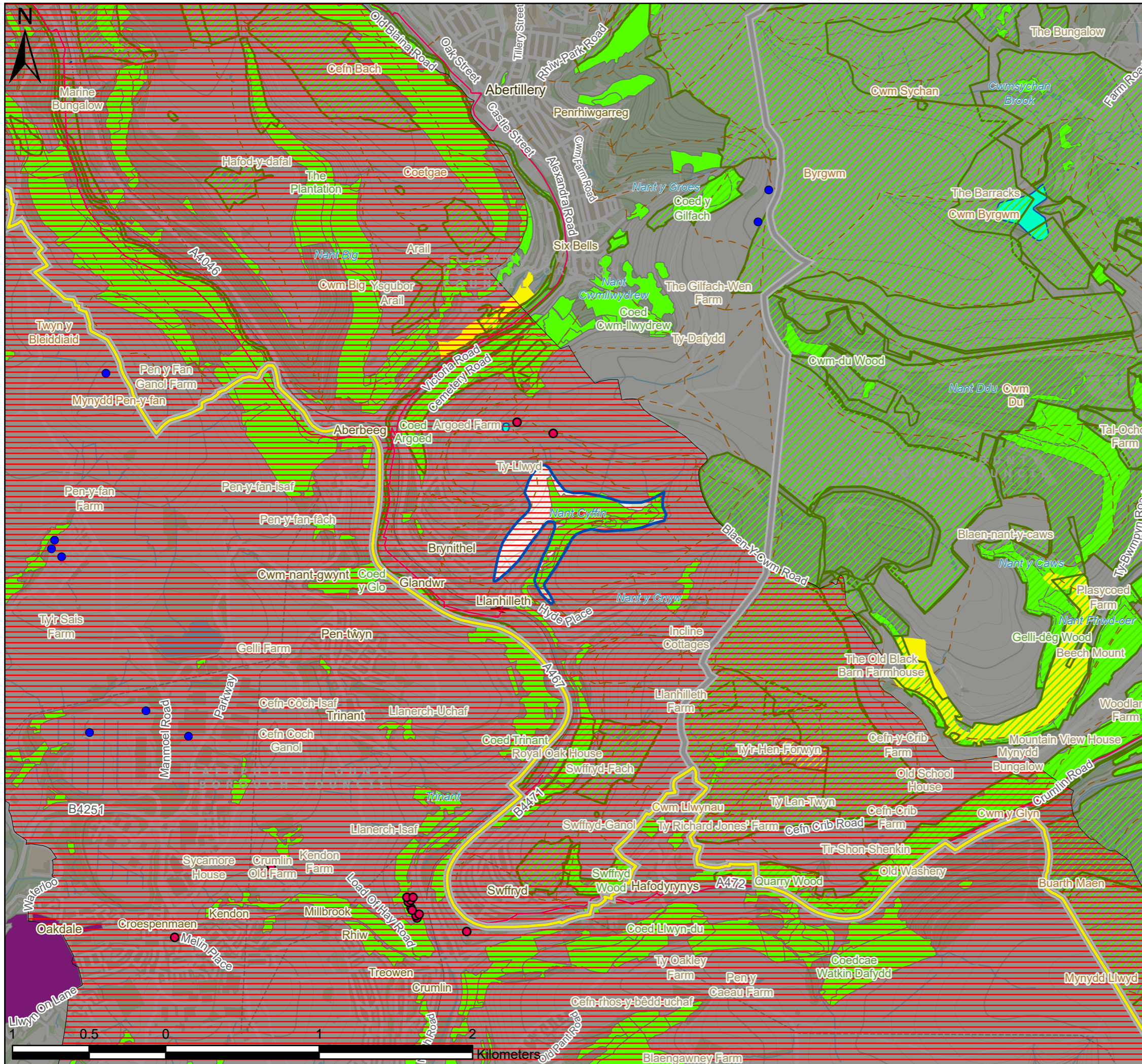
Wind turbines

There is no existing wind turbine development in the area. It also lies within the Pre-Assessed Area for wind. This is a very small area with very high landscape sensitivity to development of this type.

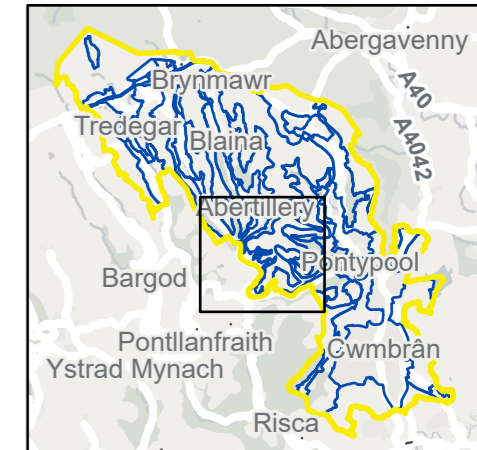
Solar PV

There is currently no solar farm development within this landscape unit. The landscape sensitivity is very high. Should solar development be considered for this area it is recommended that the southern facing side of the hill be utilised, where this would not affect residents or ancient woodland and recreational sites.

For Local Landscape Constraints see Figure 7.31.1



- Existing Wind Turbines
- Listed Buildings
- ▭ Landscape Area Unit
- ▭ Study Area
- ▭ Local Authorities
- National Cycle Network
- - - BGCBC and TCBC Public Rights of Way
- ▭ Pre-Assessed Areas for Wind Energy
- ▭ Sites of Special Scientific Interest
- ▭ BGCBC and TCBC Sites of Importance for Nature Conservation
- ▭ Conservation Areas
- ▭ Scheduled Monuments
- ▭ Local Nature Reserves
- ▭ Ancient Woodland



P3	FI	28/10/2021	Client feedback	TW	ZS	LC
P2	FI	06/07/2021	Client feedback	TW	ZS	LC
P1	S3	10/06/2021	First issue	TW	ZS	LC
V.	S.	Date	Description	B.	C.	A.

- Environmental Consultants
- Planners
- Landscape Architects
- Landscape Managers
- Urban Designers
- Ecologists



10 Park Grove, Cardiff, CF10 3BN • 02920 228966 • admin@tacp.co.uk

Blaenau Gwent and Torfaen County Borough Councils
Sensitivity and Capacity Study for Renewable Energy Development

Figure 7.31.1
 LAU 31 Landscape Constraints (Sheet 1 of 1)

Drawing no.: 61007_DWG_F7-31-1LAU31